



ALBION HOUSE

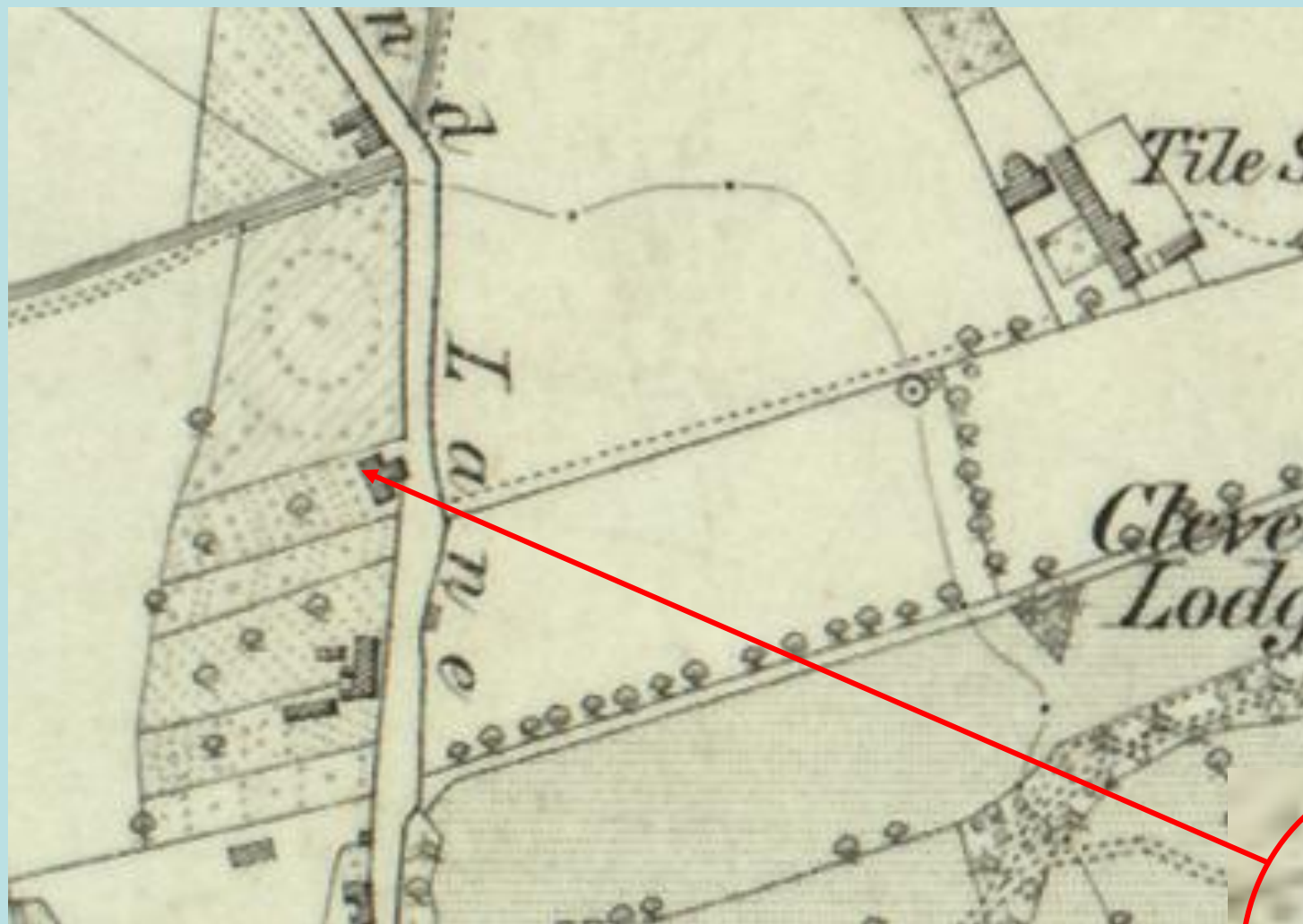
&

HARBOTTLE'S  
SHOP

Newton Road

# Albion House

The plot of land on which 73 Newton Road now stands was purchased by John Harbottle in 1851 and has been in the Harbottle family ever since. The name Albion House first appears in 1890 and it was from here that the joinery business flourished before it moved to the Station Road premises in the 1930s. Later a prosperous chicken farming operation was housed in the old workshop and Theodore Harbottle ran a cycle shop and Landrover dealership from the front shop. 3 petrol pumps sat in the small forecourt for many years until the demise of the business in the early 1980s when Albion House reverted to domestic use. Sadly the house is now (2011) up for sale and the name Harbottle seems about to be erased from this once noble property



Original house located  
on 1856 O.S. MAP



Enlarged house as shown on 1898 O.S. map

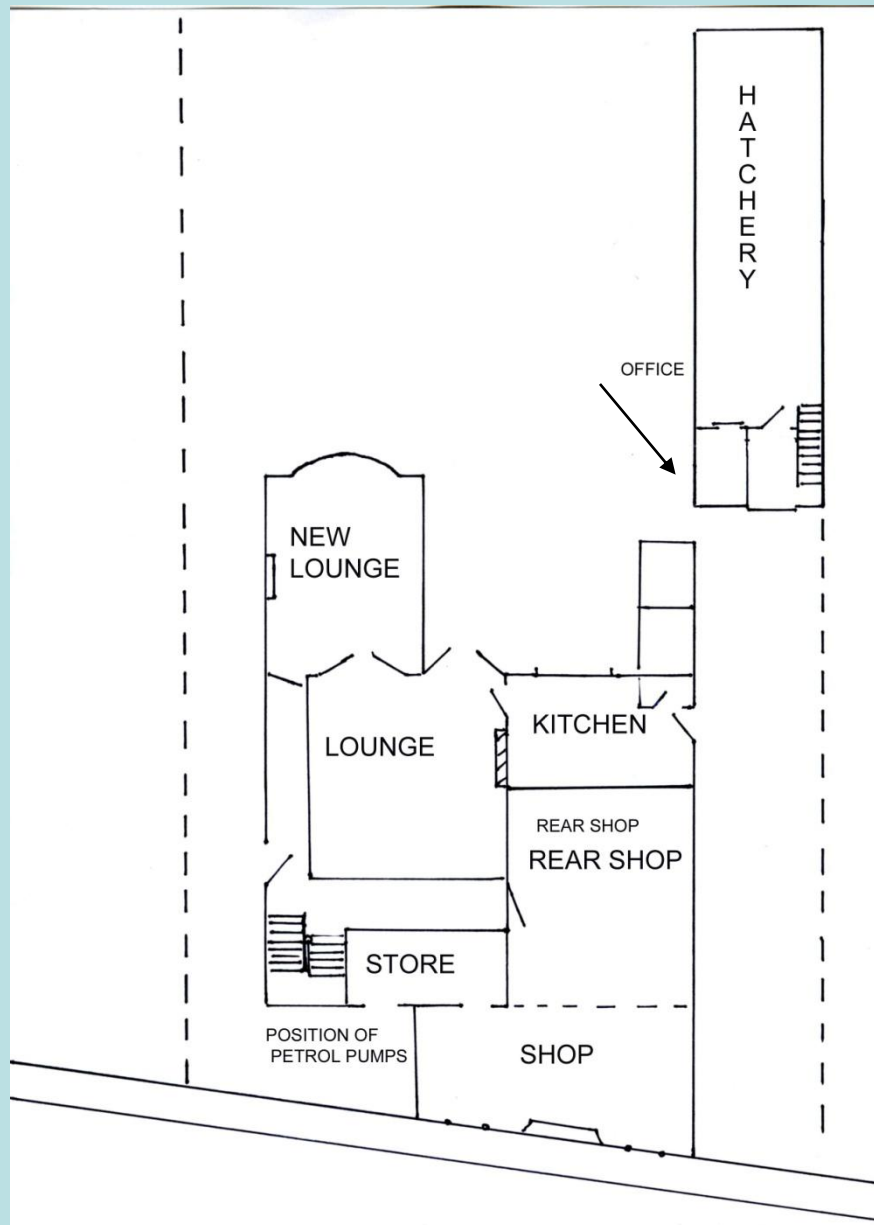




Front elevation

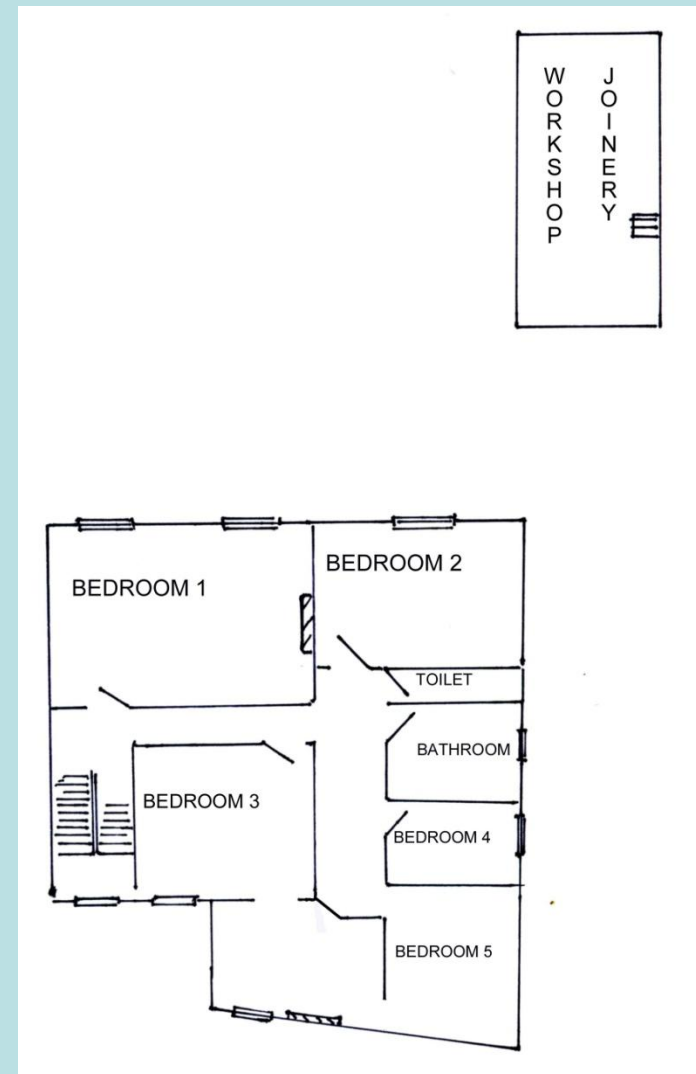


*Drawings by Barbara Gray*



GROUND FLOOR

PLAN VIEW



FIRST FLOOR





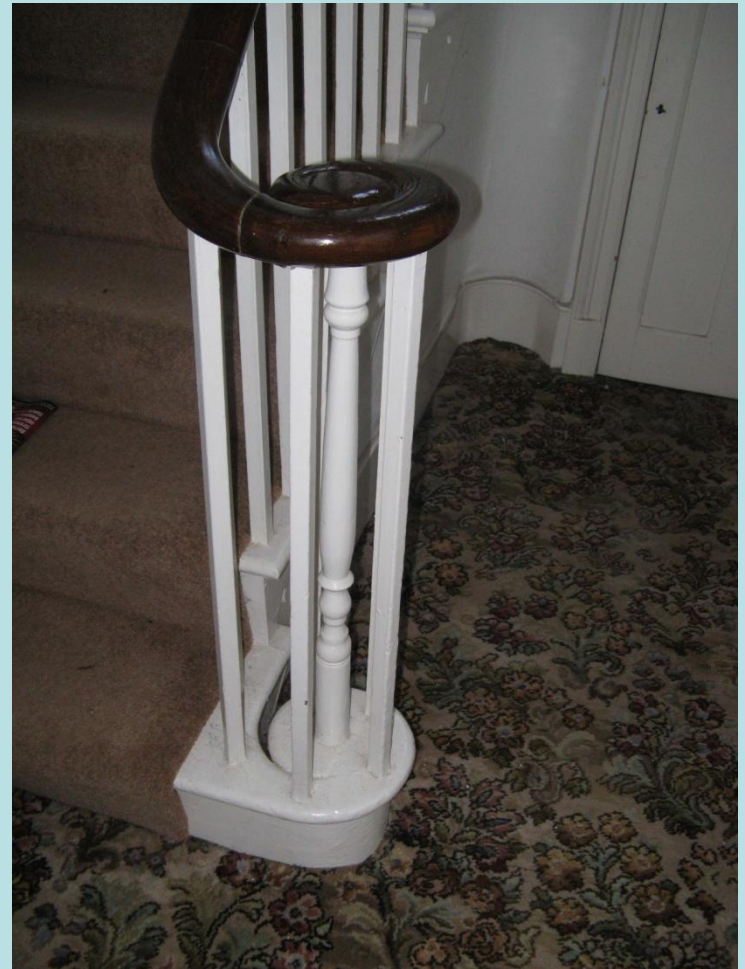
FRONT DOOR



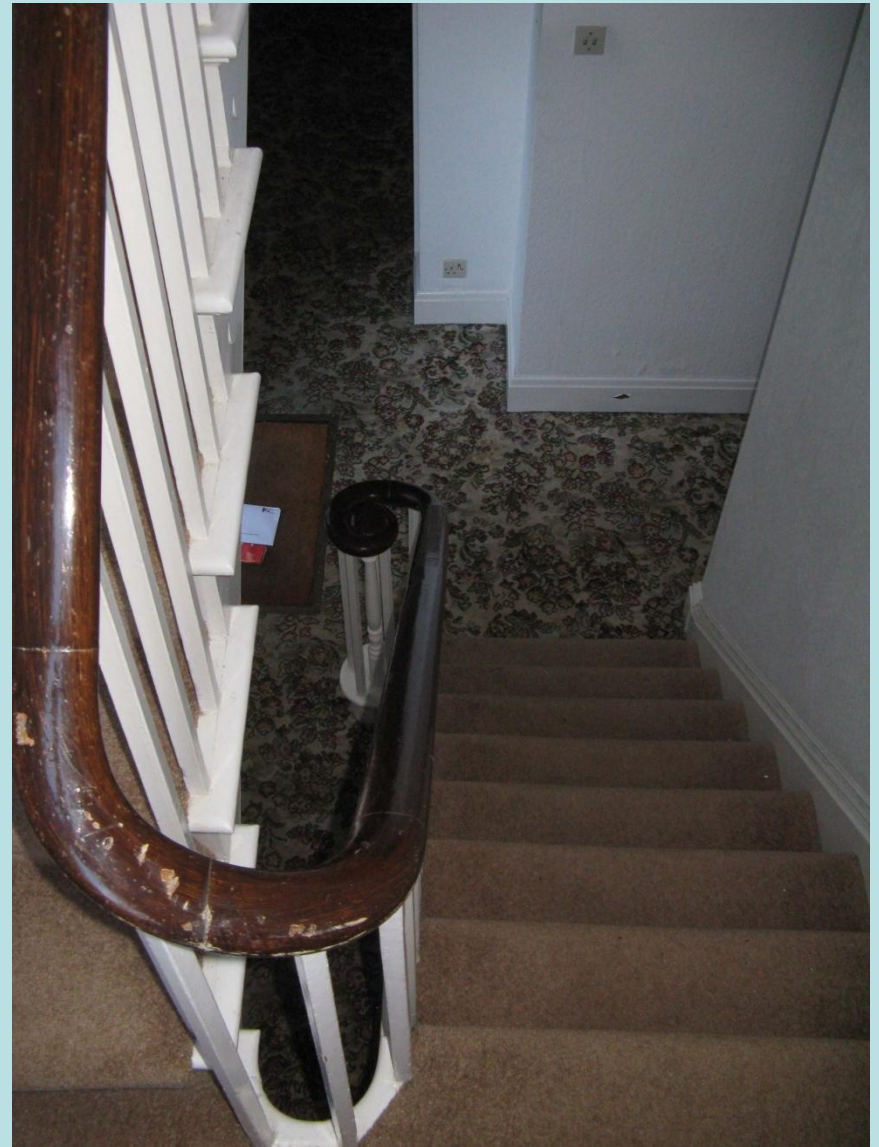


HALL





STAIRCASE



THE STAIRWELL





LOUNGE





SINGLE STOREY EXTENSION  
AT REAR



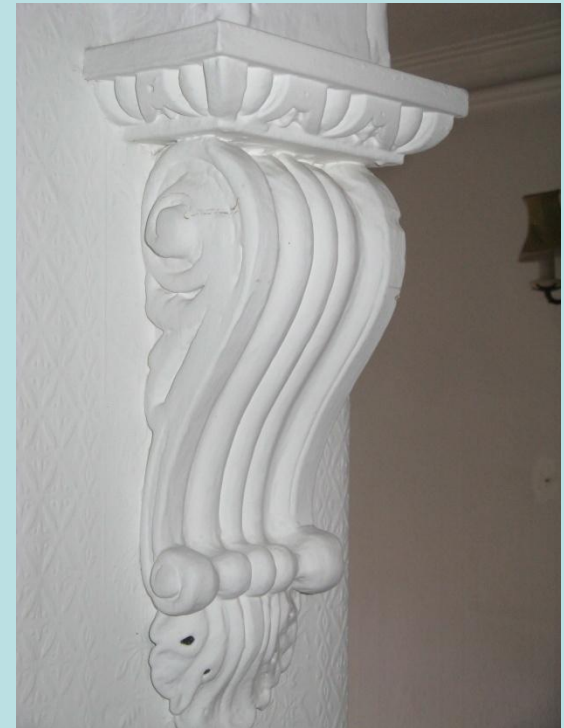


KITCHEN



PANTRY WINDOW





UPSTAIRS HALL showing  
decorative moulding





BEDROOM DOOR & SASH WINDOW



POSITION OF STAIR TO LOFT





FORMER ENTRANCE TO  
CELLAR





FRONT SHOP



BACK SHOP





ACCESS TO WORKSHOP







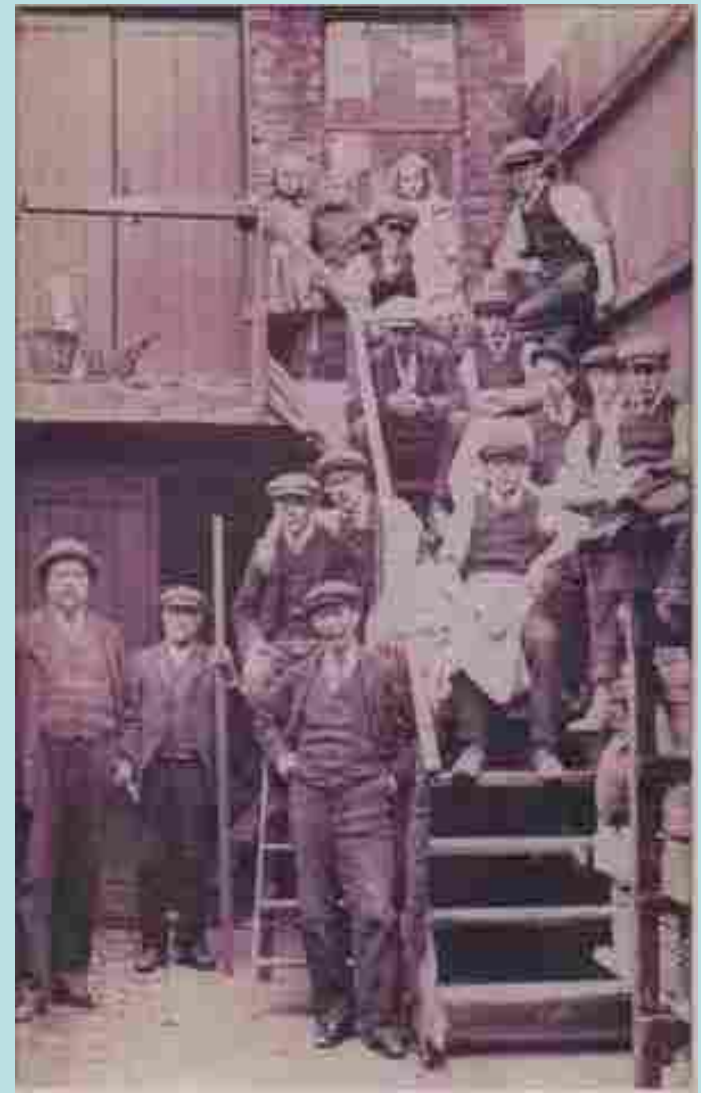


WORKSHOP





NOW INTERNAL



FORMERLY EXTERNAL

STAIR TO CARPENTER'S WORKSHOP



BLOCKED DOORWAY

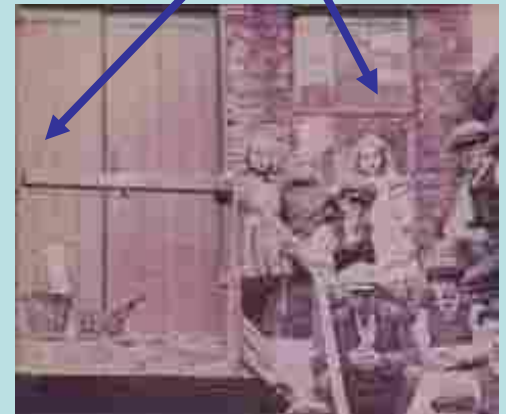
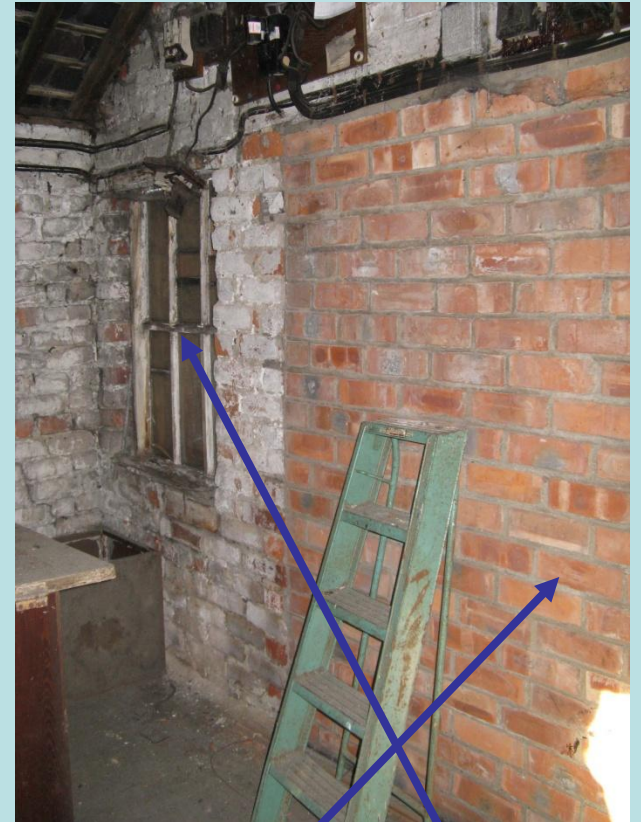
WINDOW

PRESENT DAY  
FRONT VIEW





UPSTAIRS WORKSHOP













THE CHICK DEPARTMENT





**“ALWAYS ON SUNDAYS”**

**THE CHICK SEXING ROOM**



THE HOUSE - REAR ELEVATION



# THE END



*Surveyed by*

Peter Morgan

Cath Small

Barbara Gray

Ken Taylor

27 October 2010