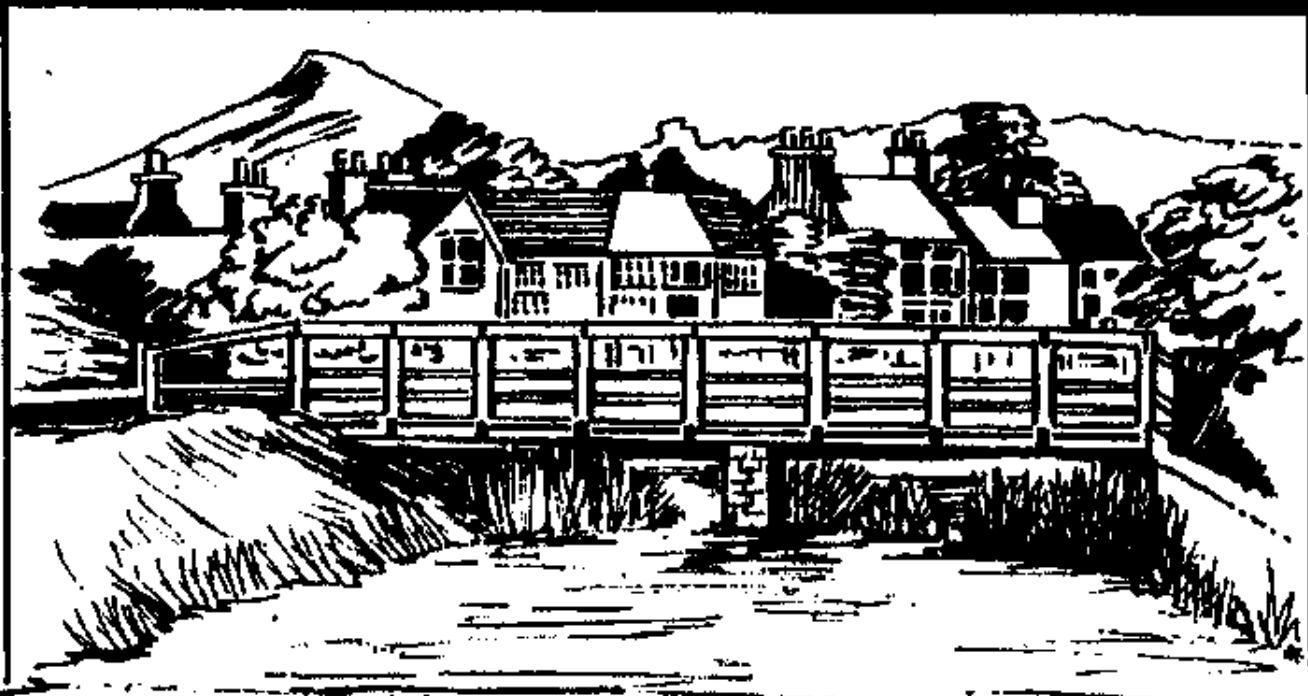


ISSUED BY

The
Community Care Association
in Great Ayton



THE
STREAM

AUTUMN 2006

AYTON COMPUTERS

Now Open - Now Open

New Systems
Repairs
Service
Upgrades
Virus Removal
Printers
Home Visits
Ink-Paper-Discs
Hardware

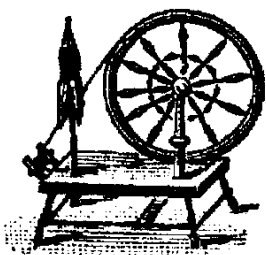
Need a new Pc ??
Easy Weekly Payments
Systems custom built to your needs.

53 HIGH STREET, GREAT AYTON
Tel: 01642 723433 - 07796 992244
aytoncomputers@tiscali.co.uk

THE SPINNING WHEEL

HIGH QUALITY CLOTHING ALTERATIONS

CURTAIN MAKING ALSO AVAILABLE



57 High Street, Great Ayton

Mobile: 07876 522325

No calls after 5.00 pm, thank you

KILDALE VILLAGE STORE & POST OFFICE

Tel: 722 239

also offers



Bicycle Hire & Maps

Teas, Coffees
& Light Refreshments

BRIDGE GUEST HOUSE



OPEN ALL YEAR

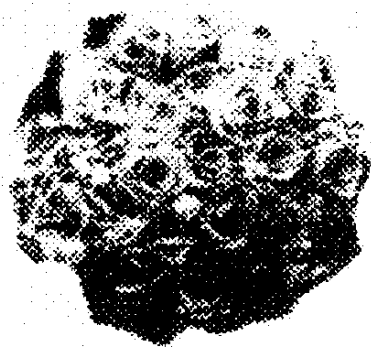
5-9 Bridge Street, Gt Ayton, TS9 6NP
01642 725236

JOHN HARRISON INTERIORS

**Hand - made
Furniture**

11 HIGH ST. GREAT AYTON 01642 724 236

bloomarie florist



YOUR QUALITY
FAMILY RUN FLORIST

Flower Shop of the Year 2006:
Silver Award for excellence

PLEASE CALL IN

**FLOWERS & GIFTS
FOR ALL OCCASIONS**

**WE DELIVER FREE LOCALLY.
NATIONALLY, & WORLDWIDE**

**EVERYTHING YOU WOULD
EXPECT FROM A FLORIST
AND MORE!**

**FIND US THROUGH
THE ARCADE, HIGH ST.
GREAT AYTON TS9 6BW
TEL: 01642 725 333**

**WE APPRECIATE YOUR
CUSTOM AND LOYALTY**



Genuine cartridges and paper
available for most brands including...

EPSON Canon brother



LEXMARK



**Direct >>>
Business
Supplies**

**tel: 01642
714 715**

Unit 7, Ellerbeck Way
Terry Dicken Estate, Stokesley

**...dead fed-up
with your printer?**

**Get a great deal on new ink,
paper or even a new printer,
just visit your local outlet...**

- ✓ Ink & Toner Cartridges (all makes)
- ✓ A4 Normal & Photo Glossy Papers
- ✓ Computers, CD's & Accessories

**Over 18,000 office
stationery products
all at low, low prices.**



Redcar Physiotherapy & Sports Injury Clinic

- Chartered & state registered physiotherapists
- Qualifications recognised by the medical profession & health insurance companies
- Well equipped clinic
- All muscular & skeletal problems treated
- Sports injuries
- Neck, back & shoulder problems
- Arthritic problems
- Flexible appointments including evenings & weekends

BUPA

FRIENDLY, PROFESSIONAL SERVICE

**Mr P. A. Chinn Grad.Dip.Phys, M C S P., S R P
Mrs C. E. Chinn Grad.Dip.Phys, M C S P., S R P**

01642 490110 FAX (01642) 476913

14 Park Avenue, Redcar, Cleveland TS10 3JZ



LOCAL ○ LONG DISTANCE
WEDDINGS

AYTON TAXIS

Telephone: Great Ayton

01642 722448

**A J CARPET UPHOLSTERY
& DOMESTIC CLEANING
SERVICES**

3 PIECE SUITES FROM

£35.00

CARPETS FROM

£20.00

Call - out service for floods.
Special rates for full houses

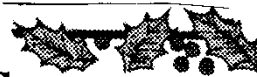
Tel: Great Ayton 724288

Proprietor: N Dunning

Mobile : 07970 051087



Tally's



Café - Bistro 01642 722 222

9, Station Road, Great Ayton.

Closed Wednesday & Thursday



Open Monday - Friday 10am to 4pm

Saturday 10am to 4.30pm

Sunday 12pm to 4.30pm

4 Course Christmas Lunch £11.95

Daytime Bookings Only

Table Licence

Parties welcome - we can cater for up to 40

Blackboard Specials

Cyclists, Walkers and Hikers Welcome

W. Storey *Funeral Service*

The oldest established independent family
funeral service in Cleveland

Offering a complete and personal
funeral service, day or night.

Monumental Service

Prepayment Plans Available

GUISBOROUGH (01287) 632730

20 Redcar Road, GUISBOROUGH



STATE REGISTERED CHIROPODIST & PODIATRIST

Catherine Garwood, BSc Podiatric Medicine

Professional treatment of foot problems and attention to foot care

STOKESLEY

2 High St

ORMESBY

Southlands Centre

INGLEBY BARWICK

Car Park, Ground Floor,
Myton Rd, opposite Tesco

For all appointments & enquiries tel: 01642 760 333

DAYTIME AND EVENING CLINICS

4	The Editor's Space	Carol Morgan
	Traidcraft Event; Coffee Morning; Optician's Transfer; Crash Bang Wallop; Gt North Run; Paul & Vicky in Uganda	
5	The Season's Greetings	
5	Father Christmas visits Gt Ayton	Richard Thompson
6	Message from the new CCA Chair.....	David Sills
7,8,9	CCA FACILITIES & PERSONNEL	Helen Murfin
10	Please Help to Save our Tourist Information Centre!	Management Committee
10	Fair trade in Stokesley and Great Ayton?	Barbara Hawkins
11	Skottowe in Africa!!	Alan Pearson
12	Fun in the Sun!	Catherine Hutton
13	Gt Ayton Bridge Club	Barbara Bigland
13	The Indomitable Gesture of Organ Sunday	David Petch
14	1 st Gt Ayton Scout Group	Philip Walker
15	Girl Guiding in Gt Ayton	Alison Lambert
16	Hambleton Citizens' Advice Bureau	Ian Heseltine
17	A Local Quaker in Lebanon	Joyce Spinks
18	Recipes from the W.I. Cookbook	

Pages 19 – 30: THE INFORMATION SECTION (YELLOW PAGES)

19,20,21,22	BUSINESS HOURS IN Gt AYTON + POSTING TIMES	
23	COUNCILLORS, & MP. HIRING HALLS. B & B LIST	
24,25	ORGANISATIONS SERVING Gt AYTON	
26	BUSES (Outline Timetables: 81 (Stokesley-Redcar) & 29 (Stokesley-M'bro') etc.	
27	TRAINS: M'bro'-Whitby (Esk Valley Line) & NYM Steam Railway Winter Events	
28	RECYCLING UPDATE	
29	DO YOU KNOW....? (Health Centre, HDC, Farmers' Markets, etc)	
30	CHURCH SERVICE TIMES & PERSONNEL. USEFUL PHONE NUMBERS.	
31	Work from Roseberry Community Primary School	
32	Jubilee Church? So Who Are We????	Raj Saha
32	Yatton House Society	Judy Lindo
33	The Gt Ayton Community Archaeology Project	Ian Pearce
34	Don Pickering Remembered	Paul Pearson
35	Reveries of an Aged Pastor	Mgr Ray Charlton
36	Cricket's Premier Division Champions!	Ray Speed
37	Gt Ayton's Own Day Centre	Dot Ellerby
38	Myth Busting	Paul Peverell
39	Work from Marwood C of E VC Infant School	
40	Distinctive Characters from the 1920/30s	W T (Bill) Kirby
41	In Search of (Longstaffs & a book).....Can You Help?	Sybil Edwards
41	100 Years Ago	David Taylor
42	The Angrove Singers	Chairman
42	Ayton Freemasons' Lodge	A R Corry
43	WORDSEARCH COMPETITION. CLOSING DATE: SATURDAY 25th November	
44	Great Ayton Library & Information Centre	Chris Bower
44	GATA – Gt Ayton Twinning Association	Sue Crellen

**AS OUR PRINT IS SO SMALL WE PUT A LARGER (A4) VERSION IN THE LIBRARY, CCA CENTRE,
THE DAY CENTRE AND HOLLYGARTH, ALL KINDLY SPONSORED BY MRS DULCIS HINTON.
Please ask for them and tell others who may need them.**

4 THE EDITOR'S SPACE: Carol Morgan, 22 Wheatlands, Gt Ayton. 722 897
email <candpmorgan@bun.com>

Advertising Manager & Printer: **Marian Button 723 014** Main Proof-Reader: **Peggy Friend**

Business Hours Researcher: **Liz Greenhalgh** Final Proof- Reader: **Martin Davies**

Always sharing & solving my problems, my ingenious, gifted husband: **Peter Morgan!**

Cover designed & drawn by **Julia Jewitt**

Advertisers, sponsors, contributors, Christ Church (printing), Yatton House (collating), collators and deliverers, Editorial / Production Team – each link in the chain is indispensable and highly valued.

**My grateful thanks to all my very hard- working, very supportive collaborators,
whatever their sphere of operation – NEARLY 60 UNPAID VOLUNTEERS!**

Everything is even more tightly packed in than usual – more articles & more adverts than expected – which is wonderful, but means that there are more '&'s instead of 'and's to save space. Sorry, but it saves ink too! Narrower margins, smaller gaps between paragraphs & lines ... all the tricks I have learned over the years to squeeze in as many words & details as possible. Hope you persevere! CM

Traidcraft: Open House at the Harvies' 71 Roseberry Crescent, Gt Ayton.
Saturday 4th and Monday 6th November 2006 11 am to 7 pm

The best fair trade craft, fashion and food from around the world. Fighting poverty through trade.

Kildale Coffee Morning for Yorkshire Cancer Research (Money for Yorks. Universities only)
Another hugely successful event. Thanks to all who produced goods to sell, helped in any way, & all who came & spent their money – we raised a splendid **£1,110 !!!** **Next year: Tues. 2nd Oct!**

Optician's Transfer: Records from Val Alsop's Gt Ayton Practice have been transferred to
Stokeld & Stephens Opticians, in Marton. See advertisement, p.45, for details.

Crash Bang Wallop Local Youth Theatre Company needs a dry, secure space – a garage, shed or outbuildings – to store props & costumes. Happy to pay rent! Please ring: **722 192**

Great North Run: Success! I decided to run for the Alzheimer's Society only 2 weeks before the event & have raised £276. I would like to thank everyone who has sponsored me. I would gladly accept any more donations. Mike Newton (of GASBAGS) **mike@newton948.freeseve.co.uk**
How about Ayton getting its name mentioned next year by getting the most runners from a small village? Are you keen? You apply at the Great Run website **http://www.greatrun.org**

Paul & Vicky doing VSO in Uganda: for news up-date visit their website: **www.bwindi.co.uk**

The Stream – the CCA's Gt. Ayton Magazine

3,000 copies: 1 FREE to every house in Ayton, Newton, Easby, Battersby & Batt'by Junction, Kildale & Ingleby Greenhow. Extras go to local Libraries, Churches, Health Centres, etc. in Stokesley, Hutton Rudby & villages visited by the CCA's mini-buses, to publicise CCA facilities.

We print in SPRING and AUTUMN every year.

Why not ADVERTISE with us? £10 for 1 square on any of up to 7 pages. (£12.50 for a square on the Back Cover. - we have a waiting list for those spaces!) I have learned to point out that this is very good value as the "shelf life" of the adverts is **6 months** - until the next Stream is printed!

If you are interested, please contact Marian Button, 723 014. (& £2 will sponsor a page)

Donations are welcome – we no longer cover our costs since we have increased the number of copies, but we don't want to raise charges as we try to offer a service for small & new businesses, and we recognise that some advertisers are mainly, kindly, supporting the CCA. **CM**

*The people named below
would like to wish all their local friends & neighbours
A Joyous Christmas and A Happy New Year!*



John and Helen Dickinson

Gill and Pete Steele



*John, Cathy & Helen at Great Ayton Library thank their customers
for their support & send best wishes for Christmas & 2007.*

Donations have been made to the Community Care Association. Received with thanks.

THOMPSON'S CHRISTMAS GROTTO

Sunday 19th November

10.30am – 12.00 & 12.30pm – 2.00pm

Father Christmas will be coming!

When Father Christmas came last year he raised
£200 for **Yorkshire Cancer Research** again.

He is looking forward to coming back this year
and proceeds will again go to Yorkshire Cancer Research.

If you would like to collect a colouring Christmas picture/letter from Thompson's
Hardware you could bring it along as you visit Father Christmas on

Sunday 19th November.

Thank you for your valued support

Richard Thompson





Message from the new CCA Chair, David Sills



As reported last time, **Kath Murray** retired as Chairman at our AGM, causing a series of changes on the Executive Committee. I was appointed Chairman with Dorothy Blakey as Vice Chairman; David Dale is now Treasurer and Don Brown Secretary. We also said farewell to Irene McDonald and John Ramsdale who retired as Executive Members although John continues to look after the transport side of things. We thank them all for their commitment and support over many years. We appointed Alan Herd and John Leeman to the Executive Committee. In the office Ann Winney left to work elsewhere and Ann Maddison was appointed as a new secretary to work 14 hours per week. One of our great strengths is that we are able to staff the office and be available on the telephone from 9am to 5pm five days a week. We are confident that the new appointments will enable us to continue to offer this service. We are also pleased that Elizabeth Robinson has agreed to continue with her work inputting data into our computer system and acting as Minutes Secretary for both the Executive Committee and the Advisory Committee.

We recently succeeded in obtaining a grant from Awards for All, part of the lottery funding, to enable us to update our computer system, with new terminals networked, & broadband access to the Internet. Our thanks are due to Don Brown who gave much time & expertise to ensure that it was up & running with few snags. It has enabled us to move forward by paying staff & volunteers by BACS payments and keeping records in ways which are required by our funding partners.

We have placed an order for another new **minibus** which is now being prepared with delivery expected by the end of October. We are conscious that our minibuses need replacing every 5 years because they get so much use, so fund raising will be on-going. If you, or an organisation you are involved with, would like to assist us in fund raising please make contact! A new minibus costs **£30,000** and, although groups and public bodies help us and people are very generous, we must continue fund raising ourselves.

To enable us to respond to all the requests for help we receive, we need an army of volunteers, people who use their own cars to take clients to appointments, minibus drivers, carers and befrienders. If you feel that you have a little spare time and could offer help, please contact Helen Murfin who will be only too pleased to chat to you about where you might fit in. None of us can be certain when we will require the support of volunteers, so why not become one while you are fit and have time to offer?

We have maintained nearly all our activities this year: Luncheon Club, Chairbics, a weekly dance and the Friday afternoon 'Take a Break' refreshments in the Town Hall, gentle exercise in the Methodist Church Hall and Carers Support, Pop-in at the Centre and Listening Service in the Community Care Centre in Town Close. One of our activities, a regular Saturday evening dance in the Methodist Church Hall, had to cease with the retirement of its organisers, **Lilian & Norman Cuthbert**, who had faithfully & generously organised this activity for many years. It is people like these who we are trying desperately to replace. If you would like further information on any of these activities or, better still, to offer to assist with them, please contact **Helen Murfin (710 085)**.

FACILITIES AVAILABLE THROUGH YOUR COMMUNITY CARE CENTRE 7

For further information, ring the new Centre on 710 085

The new building is now above the new Library, reached by lift or stairs.

Address: (Reg. Charity No: 519662)



COMMUNITY CARE CENTRE, TOWN CLOSE, NORTH ROAD, STOKESLEY, TS9 5DH.

Tel: 710 085 **Email: stk-cca@tiscali.co.uk** **Office Hours: Mon – Fri 9am – 5pm**

Carers' Support Group **ALTERNATE MONTHS: Usually the first Wednesday 2.00 – 3.30**

An informal monthly meeting, at the new Centre, for Carers to discuss their problems and experiences, to gain support & advice from other Carers & CCA staff. Guest speakers & excursions add to the benefits. Please ring the Centre for more information.

Chairobics **NOW IN THE TOWN HALL.....** **..... Thursdays 10.30 - 11.30**

Fun and gentle exercise among friends for those who need encouragement to keep mobile sitting down!

Gentle Exercise **Stokesley Methodist Hall, Mondays 10 – 11.30am**

Join us each week. Only £2 to keep gently fit! So popular we had to move elsewhere!!

Library Book Delivery Service

In co-operation with Stokesley & Ayton Libraries, chosen books can be delivered to the housebound & disabled. There is now a separate service from Gt Ayton Library, with CCA volunteers. **Ayton Library: 723 268.** **Stokesley Library: 01609 533 461**

Listening Service **Ring the Centre 710 085**

Regular cassette tapes of local news & interest for blind & visually impaired, housebound or lonely people.

Mini-Buses: Excursion Club **Ring the Centre: 710 085**

Opportunities for the elderly to enjoy widening their horizons by joining a range of Excursions from April to December. Book early for these popular outings!

Mini-Buses: Private Hire **Ring the Centre: 710 085**

The 2 mini-buses may be hired, within the terms of the Licence, for the transport of elderly, disabled & infirm people, for a range of purposes, providing they are appropriate to the CCA.

Mini-Buses: Scheduled Services **Ring the Centre: 710 085**

The 2 mini-buses run a series of regular local services allowing the elderly, disabled and infirm comfortable mobility into main centres for shopping, to Health Centres and to CCA facilities, etc. Names of those travelling must be given in advance.

Pensioners' Luncheon Club **Thursdays 12.00 - 1.00** **Ring the Centre: 710 085**

NOW AT THE TOWN HALL

An opportunity for people of pensionable age to meet and enjoy a freshly cooked meal in a relaxed and friendly atmosphere. Just £2.50. Transport can be arranged.

This is so popular that it will soon reach capacity & a waiting list will be opened for new clients.

Pop-in at the Centre **Usually 3 Tuesdays each month: ring 710 085 to check. 2.00 - 3.30**

A frequent get-together for people who want friendly company over a cuppa in the attractive, comfortable surroundings of the **NEW** Centre.

Respite Sitting Scheme - Ring 710 085 if you need this help, or wish to offer to be a sitter

Providing trained and sympathetic assistance to relieve a Carer from the responsibility of a sick or disabled relative, temporarily.

Take a BreakIn the Town Hall, Friday afternoons 12 – 3.30pm

Open to the general public for bargain price tea, coffee and biscuits & light refreshments.
(Market day.)

Tea Dances Alternate Thursday afternoons: Stokesley Methodist Hall 1.30 - 4.00

Social exercise and relaxation, as members take to the floor and enjoy each other's company, and sequence dancing, for only £1 per person. **Ring the Centre: 710 085**
Sadly the alternate Saturday dance has closed on the retirement of the long-standing Organisers, Lilian & Norman Cuthbert. Many thanks to them for their years of commitment.

The Stream Ayton's Village Magazine. 3,000 copies Published in Spring and Autumn.

The Stream carries several pages of CCA information & so is made available throughout the CCA's area of operation, via its mini-buses. See p. 4 for details of delivery & advertising.
Ring Carol Morgan, **722 897**, about copies/articles, & Marian Button, **723 014**, to advertise.

Volunteer Centre Ring the NEW Centre: 710 085

Volunteers are needed to undertake a wide range of tasks, such as respite sitting, shopping befriending, pushing wheelchairs, etc., & operating the Luncheon Club, Dances, Pop-ins, etc.
Volunteers are interviewed and references taken up before tasks are allocated.

Volunteer Drivers To enlist, or if you need this help, ring 710 085

Drivers use their own car to provide transport to Hospitals, clinics, etc., for those unable to use public transport. Passengers pay a fee to offset the mileage costs re-paid to drivers.

WE STILL NEED CAR DRIVERS! – ESPECIALLY IN AYTON!!

THE MORE WE HAVE, THE LESS EACH IS NEEDED.

There is a mileage allowance paid to drivers. Your help is greatly appreciated by those in need of transport to keep appointments or to visit loved ones in Hospital. These are not regular commitments. You are not obliged to accept every request made to you – if you can not be available the CCA will ask the next person on the list – that is why we need a **long list** of possible drivers!

IF YOU COULD HELP, EVEN OCCASIONALLY, PLEASE LET US KNOW – 710 085.

PLEASE NOTE

The **Community Care Association** has **MOVED** to its **NEW CENTRE** above the **NEW Library**, close to the site of the old Stokesley Bus Station. The Staff are there to welcome you. The Council Offices are on the left, the Library is on the right as you go in through the entrance. The lift is easy to find, further in on your right. If you prefer the stairs they are even further in on the right, through a door. **The ground floor café is now open, called TCs – see advert + coupon.**

Day Centre for the Elderly and Confused Mondays & Wednesdays 9.30 – 3.30

Caring for those suffering from mental confusion, dementia & Alzheimers Disease, so providing relief & support for Carers. Clients are referred by Social Services, GPs, or the CPN. Qualified & experienced Leaders helped by experienced volunteers provide stimulating activities. For more information ring the Alzheimer's Disease Society: **713 761**.

Support Group for Carers of People with Alzheimer's Disease & other Dementias

This group meets once a month in the Centre. It gives relatives and friends of people with mental health problems the opportunity to get together and discuss all sorts of matters. We all have knowledge of the difficulties of looking after dementia sufferers & are thus able to share our experiences – it's good to talk about things & see the funny side of daily happenings.

Please ring **Jancie Brown: 723 873** or Alzheimer's Branch Office, Thirsk: **01845 525 497**.

The Leven Club & The Arches Thursdays 2 – 4pm and Tuesdays 7 – 9pm

2 social clubs, for people experiencing mental health problems, meet here in Stokesley each week - friendly, informed groups that provide support & a variety of activities. The Leven Club meets on Thursdays & The Arches Club on Tuesdays. **Ring Marlene Tait on 01609 780 758**

Citizens Advice Bureau no longer comes to the Centre. See p. 16 re Hambleton CAB

Guisborough Office, Belmont House: Open Sessions Mon & Wed 9.30 – 12.30. (No phone.)
Redcar Advice Line **01642 488 483** Mon 10 – 12. Open Sessions Mon & Thurs 10 – 1 pm.

Also at the Centre: **Kids Club**, Mon–Fri 7.30–9am & 3–6pm (8am–6pm in School Holidays)

Weight Watchers, Tuesdays 9.30 – 11am and Wednesdays 6.30 – 8pm

PLEASE REMEMBER: rooms in the NEW Centre may be hired, as before, for functions, etc. – there are several, of various sizes, from small, for meetings, to large for activities, with access by lift / stairs, & with facilities for the disabled, plus a small kitchen for refreshments.

COMMUNITY CARE ASSOCIATION: STAFF & COMMITTEES**STAFF:**

MANAGER: HELEN MURFIN

RECEPTION & CLERICAL:

Mrs Freda Rudland, Mrs Margaret Walkington,
Mrs Ann Maddison, Mrs Elizabeth Robinson

EXECUTIVE COMMITTEE:

CHAIRMAN: MR DAVID SILLS

VICE CHAIRMAN : MRS DOROTHY BLAKEY

TREASURER: MR DAVID DALE

SECRETARY: MR DON BROWN

Rev'd Richard Bradshaw, Mr Alan Herd, Mr John Leeman, Mrs Kath Murray,
Mr Stuart Robertson, Mr Steven Smith, Mr Robin Winney.

ADVISORY COMMITTEE:

Mr T Agar, Mr B Bournier, Mgr R Charlton, Rev'd M Dykes, Mrs C Morgan,
Mr J Ramsdale, Mr C Schofield, Mrs C Seymour, Mrs M Skilbeck, Mr A Swales.

MINUTES SECRETARY: Mrs Elizabeth Robinson

GREAT AYTON TOURIST INFORMATION CENTRE!

As reported in the last issue of *The Stream*, closure of the Tourist Information Centre was averted **FOR THIS PAST SUMMER** by generous funding from the **PARISH COUNCIL**.

However, the closure threat remains.

Strenuous efforts are being made to obtain funding from various sources.

CLOSURE of the Tourist Information Centre would be a considerable loss to both the local community and to the many visitors from all over this country and around the world, especially Australia and New Zealand, who rely on and appreciate the service we provide.

**WE NEED EVIDENCE AND TESTIMONY OF LOCAL SUPPORT
TO INCLUDE AS SUPPORTIVE EVIDENCE TO OUR APPLICATION FOR FUNDING.**

PLEASE WRITE LETTERS OF SUPPORT FOR US:

We would be very grateful for any letters of support from **residents** and **businesses** in Great Ayton, pointing out the importance of a Tourist Information Centre in a village publicised as the Boyhood Home of Captain Cook, with its Museum, statue and obelisk, close to Captain Cook's Monument, the North York Moors National Park and a natural gateway to National Trust land including Roseberry Topping. Residents also use the Centre to find details of other local events and visitor attractions, and the accommodation service is used by visitors and by residents needing extra placements for family occasions. The village shops, cafés, hotels and B & Bs are promoted by the Tourist Centre and all benefit from the tourists attracted here. Obviously, if there is no Information Centre here the tourists may go elsewhere for their Information and therefore their services, so the village could lose business and the tourists could miss out on a thriving village well able and happy to welcome them and meet their needs.

Visitors are already being invited to sign a petition in support of our continued operation, but one letter is said to represent at least 10 signatures, and carry even more weight. Additionally, any **financial contribution**, however small, towards interim operating costs would be very much appreciated.

The Management Committee

Please address any correspondence on this subject to our Secretary:

Miss Peggy Friend, 57 Marwood Drive, Great Ayton, TS9 6PD.

Fair Trade in Stokesley and Great Ayton?

Stokesley and Great Ayton Fairtrade Committee are now in a position to ask their Parish Councils for support in applying for fair-trade status for the town & village.

A wine tasting session for local business people & Parish Councillors was held in Stokesley Town Hall. The Chair of the Rotary Club & the Chairman of Stokesley Parish Council attended. Informal discussion of fair trade issues continued all the evening & Karen Loftus of Guisborough Fairtrade steering group gave a short talk on how they had obtained Fairtrade status for their town. This was followed by an exchange of ideas on fair trade in the broadest sense including looking at fair trade for local producers & farmers. The problems of the Ghanaian farmer getting a fair price for his cocoa beans were contrasted with the problems facing Yorkshire sugar beet farmers, now that Terry's of York are moving the production of chocolate away from Yorkshire to factories abroad.

Fairtrade red wine, white wine, fruit juices & snacks were available & there was a Traidcraft stall selling a wide range of cards, foods & fancy goods.

The Fairtrade committee will now put a detailed resolution to their P.C.s for consideration. **11**
The committee would be very pleased to hear from any businesses that are already offering Fairtrade tea, coffee or other products, or any businesses who would like to offer these goods.

More details of the campaign & how to get involved are available by contacting
Barbara Hawkins 01642 723 160 or Denise Henderson 01642 711 227

Skottowe in Africa !!

In June, during the World Cup, I climbed Mount Kilimanjaro to help people with cerebral palsy. The trek was organised by the national charity, SCOPE, & my sponsorship was split between SCOPE & the Teesside Ability Support Centre on Acklam Road. I met 37 other trekkers for an overnight flight to Nairobi & straight onto a 9 hour bus ride to Tanzania. The customs post between Kenya & Tanzania was very Michael Palin! Clouds cleared in the distance & we got our first view of snow covered Kilimanjaro 40 miles away.

A last night of relative luxury in a hotel then, on day 1, joined by 104 porters, guides & cooks, we were off on a gentle introduction as we climbed through the rainforest. Cold mist gave way to very pleasant sunshine & 25°C.

Day 2 was very different, climbing through giant heather to 12,500 feet. It was cold, with sideways fine rain, the type that gets through any waterproof clothing. High altitude causes the body to dump large quantities of water. Even on day 2 this was evident in the number of individual diversions off the trek into the nearest available cover! Imagine 10 guys at night in close confinement in bunk beds in a small room taking it in turn to don head torches & disappear briefly into the night. Sleep did not happen.

The much more serious effects are water on the lungs or water on the brain. Either can be fatal but at the least, most climbers suffer headaches & nausea. On day 3 I felt wretched. General exhaustion, or altitude sickness or other causes (let's just say Immodium was the major part of my diet) maybe, but if it had been any other day than the acclimatisation day where we stayed at the same altitude, I would have been left behind.

Day 4: along the "Saddle", a high altitude desert between the twin peaks of Kilimanjaro to the last huts at 15,500 feet. To bed at 7:30 before setting off at midnight for the final climb - a single file, torchlight procession on a zigzag path up the cone of the volcano. It took 6 hours to reach the crater rim, by which time several walkers had had to go back, one guy had passed out & one poor girl had been sick 5 times. 18 of us managed the last 2 hours along the top of the crater, past a glacier to the top of the mountain, Uhuru Peak. After 1 hour of sleep the further 6 hours' walking that day were not easy! However - I raised well over £5,000 net & it was a fantastic experience!

Thanks again to everyone who supported me!

Alan Pearson 6 SKOTTOWE DRIVE, GREAT AYTON

THIS PAGE HAS KINDLY BEEN SPONSORED

Picture the scene ... a wide, flattish expanse of ground enclosed by 8 feet high fences. Tents of various size & elderliness haphazardly arranged in clusters of 'family-groups'. There is no water. There is dust everywhere, clinging to sweaty bodies as the work of pitching camp continues, the sun beating down relentlessly onto naïve, unhatted heads, unprotected necks & arms. Picture the scene, not in some far-flung sun-beaten clime, but here in the North East. It is the end of July & the Methodist Young People & friends are in Herrington Country Park under Penshaw Monument.

NE1 was a huge youth mission to the North East. Over 1500 young people from our region, the rest of the country, & from Texas, gathered together for a week of worship, teaching & service. The week was launched with a huge service including *Friday* who provided rocking accompaniment to worship, a word from Jon Burns & a prayer & commissioning from the Bishop of Durham, Revd Tom Wright. All were impressed how, when the PA amplification failed, he made himself heard naturally to the 2500 people present!

After a night of little sleep & a very early morning, the 1500 young delegates made their way back to the marquee for a very noisy time of worship & teaching. A DJ got things started & the place was soon jumping. After this, we were divided into teams, allocated buses & dispersed to various places across the length & breadth of the region. Part of our group went to Whitley Bay to refurbish a children's playground; the rest of us went to Birtley, under the shadow of the Angel.

Here, we were greeted by a local church, taking on a dilapidated Assemblies of God building, redundant for 10 years, in order to start a new church in the heart of a difficult area. Our task was to help them to get to know the community & show that God loves them in very practical ways. Half the team were sent to organise sports activities on the playing field, whilst the rest of us went to tidy some long-neglected gardens. It was hot work, but worthwhile as we tidied up gardens for elderly people. The sport was a success, drawing children together without fights breaking out & achieving results through football coaching, with the hope of a youth team being formed by the local church this Autumn. The biggest impact was made on a young couple, recently moved into a house whose garden was filled with layers of rubbish, & disheartened after clearing away & burning over 20 full sacks. Their neighbours suggested that we gave them a hand. Boots, toys, windows, net curtains, bottles, iron-work & all manner of debris had been dumped there & was buried under layers of soil & rubble. It took 2 afternoons of exhausting labour to clear & dig their garden. The excitement in their faces was brilliant when they saw the clear ground, & the man told us of his plans for a 'fort' that he would build in the top corner so their children would have somewhere to bring their friends to play, away from the often volatile playing-field.

We took part in a community BBQ, enjoyed good food, & welcomed showers in the homes of our new Pentecostal friends & co-workers. Back at camp each evening, we swapped stories about our day's adventures, enjoyed late-night cabaret performances from bands & other artists, drank hot chocolate & built relationships with peers from across the camp.

The week ended with a huge Youth Event, filling the giant marquee with the many local young people whom we had met during the week out in the communities. Loud music, football skill demos, DJ, speaker & worship rounded off a week of hard work. Exhausted, & looking forward to flush toilets, we struck camp to return home for sleep & to send text messages to new friends in many places.

Catherine Hutton, Methodist Minister

The Bridge Club meets each Friday evening at 7.00 pm in the Roman Catholic Church Hall, Race Terrace. We welcome players of all standards who enjoy playing duplicate bridge. We normally play about 24 hands in a pleasant and friendly atmosphere, breaking for coffee and a chat halfway through the proceedings.

Occasionally we enjoy a more competitive evening when we play for one of the Club's trophies. At Christmas we have a party with an excellent supper and an evening of social bridge. If you are interested in joining us we would very much like to hear from you.

Please telephone either:

Margaret Lunn – 01642 723 671 or myself, Barbara Bigland – 01287 633 773

The Indomitable Gesture of Organ Sunday

On Sunday 17th September the evening service at the Methodist Church was a celebration, marking 75 years since the organ was officially opened on 11th September 1931. The Opening must have been regarded as a rather prestigious occasion because attendance was by ticket only. A guest organist gave a recital and we can only imagine the singing in a full church led by the church organist, Mr Tingle.

The inspiration for the building of the present Methodist Church was of course the movement of mining families into the village. That was in 1913, and Sunday School was considered to be a very important part of the Church's link with the local community. The musical tradition has always been strong and throughout those early years the Church had a Choir. There was also a well-supported Male Voice Choir in the village.

My mind drifted back to those early 30s years and the kind of people who formed the congregation at the time of the installation of this same organ. The ones I can remember almost all worked with their hands. They were artisans. Mr Tingle, the organist, lived in a cottage opposite the old Post Office. He sold books from the front room of his house and he would do small-scale book binding. Hilda and Percy Petch had taken a butcher's shop on the High Green. Ernie Ingram was a boot and shoe maker and repairer. He worked in a wooden hut just through the archway in the High Street. The fumes from his coke stove made him wheeze continually in the winter time. Tom Robson was a tailor in a house just beyond Harbottle's old shop. George Robson was a builder and Sunday School Superintendent. Then of course there were the local farming families, some of which are still around.

These occasions always trigger some reflection and I was left wondering what would drive the relatively small congregation to install a Nelsons of Durham organ, costing £450 - £500 at a time of "soul-destroying depression" affecting the whole community. By this time the last of the local mines had closed and 2 years later, when I started at the British School (now the Library) it was impossible not to be aware of the poverty which was all around.

David Petch



Once again Scouts and Cubs have enjoyed an active and interesting Summer period.

Membership of the Scout group has grown as a result of forming our second Scout group which opened in the Summer term & which is now thriving. Total membership of the group now stands at 114 young people. Waiting lists still exist for Beaver and Scout sections.

During Spring and Summer, annual camps were attended by Scouts; Cubs and Beavers held a sleep over. Some of our Scouts attended an International Scout camp in Cheshire in August which was attended by Scouts from as far afield as Siberia and the USA. Some Cubs attended an activity day in Sheffield to celebrate 90 years of Cub Scouting this year and this event was attended by Cubs from all over the North East Region. The birthday celebration year for 20 years of Beaver Scouting is coming to an end with further celebration activities planned before the end of the year.

The Scout group is looking forward to 2007, which is the Centenary year of the Scout movement founded by Baden Powell in 1907. Scouting has 28 million members worldwide with half a million members in the UK. In August 2007 a Sunrise Ceremony is being held which Scouts from across the world will join in.

Mini Bus

Our mini bus is now nearing the end of its useful life and we have a fund in place to replace it in the near future. Over the next months as well as raising money for our mini bus appeal we will be holding local events to raise funds to support our Scout group. These include a Casino night, a quiz night, the annual duck race and further events in the planning.

My thanks to all Leaders and members of the Executive Committee who devote a lot of their time to organising Scout and Cub activities and meetings. As always, if you think you would like to join us and help run one of our sections or be involved in the movement, you would be most welcome.

If so, please contact one of the Leaders or myself:

Philip Walker: 711 503, Chairman, Group Executive Committee

Beaver Colony	Boys aged 6 – 8 yrs	Meet Fridays
Cubs Endeavour Pack	Boys aged 8 – 10 ½ yrs	Meet Mondays
New Scout Troop	Boys aged 10 ½ yrs – 14 yrs	Meet Tuesdays
Cubs Monument Pack	Boys aged 8 – 10 ½ yrs	Meet Wednesdays
Scout Troop	Boys aged 10 ½ yrs – 14 yrs	Meet Thursdays
Explorer Scout Unit	Boys aged 14 – 18 yrs	Meet Thursdays

THIS PAGE HAS BEEN SPONSORED by SALLY LEWIS



Rainbows

Our 2 Rainbow units continue to do well; both full, with the usual waiting lists! Rainbows have again been to Guisborough Walkway making bird feeders & bat boxes. They also enjoyed lots of craft & food activities, were recycling recently, & made boats which they sailed down the river.

Brownies

1st Brownies have enjoyed trips to Guisborough Walkway, making bird boxes and, more recently, pond dipping. At Easter they had fun decorating eggs and rolling them at Gribdale. They have worked on their Cook's badge – cooking a 3 course meal for the Leaders. 2nd Brownies recently held a coffee evening to raise much needed funds, for which the Brownies gained their Hostess and Entertainer badges. It has been a difficult time for 3rd Brownies due to the ongoing uncertainty regarding their use of Roseberry School. As a voluntary organization, we have not been able to fund the cost of the facilities there & the outcome has been that after 33 years 3rd Great Ayton Brownies will no longer meet at Roseberry School. From September both the Brownie and Rainbow units based there will move to the W.I. Hall which I think will be beneficial to all concerned and I thank the WI for their support. Despite these concerns, the Brownies have still managed a Pack Holiday and various badges.

Guides

Guide numbers are also relatively good considering we have 2 units in the village, but the girls are happy to come so we must be doing something right! 1st Guides have enjoyed a night out at Burger King then Bowling, lots of craft and walks up Roseberry Topping and Captain Cook's Monument. They have gained their Chocolate Lover's badge & I understand that chocolate tasting was the best bit! All the girls are looking forward to their holiday weekend planned for October at Holme House. 2nd Guides have had an overnight camp at a local farm, which was aimed at giving young Guides some camping experience. 3 girls were enrolled after a dawn walk. The girls have had a Chinese evening cooking oriental food & a Yorkshire Pudding competition, the winner being crowned 'Miss Yorkshire Pudding'. They have worked on their Performing Arts badge, & their Agility badge which involved a 5km bike ride through woods at Ingleby Greenhow.

Guiding in Great Ayton is very healthy. We have some fantastic Guiders who give their time freely for what sometimes feels like little reward, and for this I thank them. As a District we look forward to another successful year. We hope to get all our girls to Beamish for the County Fun day next July and have already planned Christmas fundraisers to assist financially.

Anita Huntsman, District Commissioner 01642 710909

1 st Guides	} 10 & over	1 st Brownies	} 7-10 years	2 nd Rainbows	} 5-6 years
		2 nd Brownies			
2 nd Guides		3 rd Brownies		3 rd Rainbows	

Venues & Times of Meetings can be obtained from the District Commissioner (above).

16 Five Things You Probably Didn't Know About.

Hambleton Citizens Advice Bureau (CAB)

the charity for
your community



1. **Who runs the Citizens Advice Bureau?**

Hambleton CAB is a charity, run by local people. It gives advice on everything from benefits, employment issues and consumer rights to housing, immigration and debt advice. Most of the advisers are volunteers, trained to high professional standards.

2. **Why is Hambleton CAB so busy and why can I never get through on the telephone?**

Because we give free, independent & confidential advice & the demand for the service is great. We always need more volunteers, to help even more people. We can't always see people as quickly as we would like, but always see everyone who needs our advice as soon as possible.

3. **Can you really help with anything?**

Yes, we can and do! Our main areas of enquiry are debt, benefits and tax credits, housing and employment. But we can deal with any question.

4. **Could I volunteer?**

Yes, we are always looking for people to join our team. As well as training advisers, we also want people with other skills, like fundraising, admin, IT, & languages. We also need people to be members for our trustee board. You don't need formal qualifications & many volunteers find that CAB experience provides a route into paid work. We want volunteers from the whole community, regardless of age, race, gender, sexuality or educational background.

5. **Who pays for the CAB?**

We are a charity & we need money to continue our work. Most of our funding comes from our County & District Councils, but also from Big Lottery Fund, Hambleton & Richmondshire PCT, as well as donations from local companies, organisations & individuals.

Hambleton Citizens Advice Bureau

Advice Sessions (in person) by appointment only

Appointments available: 10am – 3pm

Monday, Wednesday, Thursday.

To Make Appointments:

Appointment line: **01609 776 551**

Appointment Fax: **01609 773 365**

Appointment Email:

admin@hambletoncab.org.uk

Telephone Advice available: 10am – 4pm

Monday, Wednesday, Thursday.

To Ask Advice:

Advice line: **0845 122 8689**

Advice Fax: **01609 773 365**

Advice Email: **advice@hambletoncab.org.uk**

Advice Online: **www.hambletoncab.org.uk**

Address: Hambleton Citizens Advice Bureau, 27 High St, Northallerton, N. Yorks. DL7 8DW

THIS PAGE HAS KINDLY BEEN SPONSORED

None of us are able to choose the family into which we are to be born, or know the pattern of life we will follow in the years ahead, but we are all influenced in our early years by family, school and friends. I was fortunate to be born in this village of Ayton, near beautiful countryside: Roseberry Topping, Captain Cook's Monument & the Cleveland Hills. Walks, in all the seasons, a delight. An introduction to the natural world, learning its secrets – to be with the Spirit & mystery of Creation.

My father, Herbert Dobbing, was a teacher at Ayton Friends' School from 1920 – '48. In 1939 he was given long leave from Ayton to go to Germany to visit isolated Friends & help with relief work with the Jews and others who had been persecuted in the Concentration Camps. On his return he was asked, by Friends, if he would consider being Principal of Brummana, a Quaker boarding and day school in the Lebanon. In 1948 he and my mother left Ayton to do Quaker Service Overseas.

In that year the state of Israel was founded. The Jews had never had their own homeland and it seemed the time was right to form one in part of Palestine. An area of South Lebanon was annexed to form part of Israel and Arab farmers, who had tilled that land for generations were expelled from their farms. Many of the refugee families settled in Brummana Village and their children were educated at the Quaker School. The absence of ritual in the Quaker way of Worship enabled Moslems and Christians to sit down together in common worship.

In 1965 my brother's family and ours camped and caravanned overland to visit Brummana. Lebanon is a very small country, about the size of Wales, and the school is situated on a mountain ridge 2,300 feet up and giving a spectacular view of Beirut and the Mediterranean below. The political tensions were evident even then. We visited Sidon & Tyre, on the coast road south of Beirut. We were stopped at a checkpoint between the 2 towns and had our passports taken from us, to be returned when we came back. This was to prevent us from going into Israel.

My father spoke and wrote Arabic, which was very useful when we visited the Holy Land. We went to Damascus in Syria and to Hebron, the Dead Sea, Jerusalem and Bethlehem in the West Bank of Jordan. An amazing and unforgettable experience.

The problems of Middle East conflict are not ones to be tackled in *The Stream*. Sufficient to say that Jesus lived under Roman occupation and, historically, this area has been full of difficulties for a long, long time. Meanwhile, we must believe that with courage, faith and hope the way forward will be found for a lasting peace.

Joyce Spinks, Society of Friends

Oh brother man, fold to thy heart thy brother.

Where pity dwells, the peace of God is there.

To worship rightly is to love each other,

Each smile a hymn, each kindly deed a prayer.

From a hymn by G Whittier

1807 – 1892

TURKEY DIVAN (serves 6)

Ingredients

450g (1 lb) Frozen Broccoli	25g (1 oz) Butter
700g (1½ lb) Potatoes, cooked & mashed	1 can Condensed Chicken Soup
350g (12 oz) Cooked Turkey Slices	2 tablesp. Dry Sherry/Dry White Wine
50g (2 oz) Cheddar Cheese, finely grated	

Method

1. Cook broccoli in boiling salted water. Meanwhile, pipe a bed of mashed potato into centre of warmed, flat, fireproof dish. Dot with butter.
2. Place sliced turkey on top of potato and arrange cooked broccoli around potato.
3. Heat undiluted soup in a pan. Add sherry/wine. Pour over turkey, leaving broccoli uncovered.
4. Sprinkle with cheese. Reheat and brown under a hot grill.

SAVOURY PANCAKE GATEAU (serves 6)

Fillings

1. 4 hard-boiled eggs, chopped and bound with 6 teasp. soured cream/thick yogurt. Salt & pepper.
2. 3 large firm tomatoes, thinly sliced, sprinkled with chopped fresh/dried basil. Salt & pepper.
3. 5 tablesp. Low fat curd cheese mixed with ¼ finely chopped green pepper. Salt & pepper.

Topping

4 tablespoons of soured cream/ whisked whole-milk yogurt.

Method

1. Make six 15cm (6 in.) pancakes. Heat oven to 160°C (325°F/Gas 3).
2. Mix the 3 fillings in separate bowls.
3. Lay one pancake on a heatproof flat serving plate. Cover evenly with ½ of filling 1.
4. Lay 2nd pancake on top & cover with ½ of filling 2. Add 3rd pancake & spread with all of filling 3.
5. Repeat layers using fillings 2 then 1. Top with the last pancake.
6. Cover with greased foil. Reheat for about 15 minutes.
7. Warm soured cream/yogurt slightly then spoon on top of pancakes.
8. Sprinkle with parsley to serve. Cut in wedges at table.



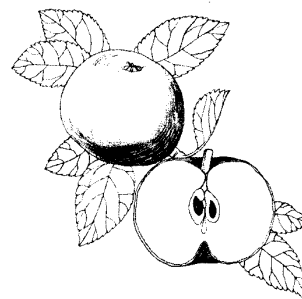
BLACKBERRY BETTY (serves 4 – 6)

Ingredients

4 Cooking Apples	100g (4 oz) Fresh White Breadcrumbs
175g (6 oz) Blackberries	50g (2 oz) Light Soft Brown Sugar
50g (2 oz) Sugar	50g (2 oz) Butter, melted.

Method

1. Peel, core & slice apples. Poach in very little water with blackberries & sugar until tender. Cool.
2. Using individual glasses, layer the fruit, breadcrumbs, a little brown sugar & a teasp. of melted butter, continuing until you have used all the fruit.
4. Finish with a layer of Breadcrumbs, sugar and butter. Top with cream if liked.



BANANA TURNOVERS (makes 4)

Ingredients

175g (6 oz) Puff Pastry	2 tablesp. Jam	4 Bananas	1 Lemon
50g (2 oz) Soft Brown Sugar	1 egg to glaze	25g (1 oz) Flaked Almonds	

Method

1. Heat oven to 220-230°C (425-450°F/Gas 7-8).
2. Roll out pastry then cut 4 circles about 15cm (6 in.) across. Relax pastry for 20 mins.
3. Brush each circle with Jam to within 1cm (½ in.) of edge. Mash banana with grated rind & juice of lemon & sugar. Spoon into centre of pastry circles. Brush ½ edge of circles with beaten egg.
4. Fold circles over, press together and flute edges. Put on baking sheet & brush with beaten egg.
5. Cook for 15-20 mins. until starting to brown. Sprinkle with flaked almonds and return to oven for a further 5 mins. Serve hot or cold. * Variation: Rum can be added to mashed banana!



12-PAGE INFORMATION SECTION
BUSINESS HOURS OF SHOPS & AMENITIES IN GREAT AYTON
(Times correct when going to print; alterations may occur occasionally)

19

Shop/Amenity	Weekdays, excluding lunch	Saturday	Sunday	Lunch
1. Bakeries				
Lynne's Bakery	8.00am - 4.30pm	8.00am - 4.30pm	-	Open
Sam's HomeBake	8.00am - 4.30pm Shut Mon.	8.00am - 1.00pm	-	Open
2. Butchers				
Stokesley Butchers	9.00am - 5.00pm (Open Mon)	9.00am - 3.30pm	-	Open
Petch's	9.00am - 5.00pm Shut Mon. 9.00am - 4.30pm Wednesday	9.00am - 4.00pm	-	Open
3. Fish	<u>Mobile fishmongers:</u>			
S Green, Park Sq	10am - 12.15pm Thursday	(01947) 600 737	(Park Square)	
Peter Calden	8.30am - 2.00pm Monday	(01723) 515 492		
4. General. Note:	<u>Alcohol may only be sold:</u>	<u>8am-11pm Mon -</u>	<u>Sat +10am-10.30</u>	<u>pm Sun.</u>
Bells	6.00am - 11.00pm	6.00am - 11.00pm	6.00am - 11.00pm	Open
Co-op Store	7.00am - 10.00pm	7.00am - 10.00pm	7.00am - 10.00pm	Open
The Alternative Store	7 - 6 Mon+Tues. - 7, W, T, F.	7.00am - 7.00pm	7.30am - 6.00pm	Open
Suggitts Ices	9.00am - 7.00pm (Café 5.15)	9.00am - 6.00ish (Café - 5.15)	9.45am - 6.00ish (Café - 5.15pm)	Open
Teasdale's (Off-licence)	8.00am - 6.00pm	9.00am - 6.00pm	10.00am - 2.00pm	Open
Worthy Pearson Newsagent and Post Office	7.00am - 6.00pm 9am - 5.30pm - 5pm Wed.	7.00am - 7.00pm 9.00am - 12.30pm	8.00am - 1.00pm Closed	Open Open
5. Greengrocers	Closed.			
6. Hot Food				
Gullivers Fish & Chips All day BankHols	11.30am - 1.30pm Mon-Thurs 11.30am - 2.00pm Friday & 4.15pm - 9.00pm Mon-Fri	11.30am - 9.00pm	-	Open
Pizzeria	5.00pm - 11.00pm Mon-Thurs 5.00pm - 12.30am Friday	5.00pm - 12.30am Tel: 722 227	5.00pm - 11.00pm	-
7. Personal				
Head's (Men's hair)	8.00am - 6.00pm Shut Mon. 8.00am - 7.00pm Fri. (later by	8.00am - 5.00pm appointment, tel:	- 724 540)	Open
Jennifer Jayne (All hair)	9.00am - 5.00pm Shut Mon. 9.00am - 7.00pm Friday	Closed	-	Open
Park Rise Ladies Hair Salon	9am Wed - Fri. Shut Mon+Tu. open - 3 Wed; - 4 Th+Fri	9.00am - 1.00pm	-	Open
Watkins Wright (All hair)(Arcade)	9.00am - 5 Tu, Wed. Shut Mon - 8pm Thurs & - 5.30pm Fri	8.00am - 3.00pm	-	Open
Walker's Hair	9 - 7 Tues+Thurs. Shut Mon 9am - 5.30pm Wed + Fri	8.00am - 1.00pm	-	Open
Body Bliss	Mon-Wed 9am - 5pm Thu & Fri 9am - 8pm	9am - 4pm	-	Open

ALL 12 OF OUR "YELLOW PAGES" HAVE GENEROUSLY BEEN SPONSORED

Shop/Amenity	Weekdays,excluding lunch	Saturday	Sunday	Lunch
8. <u>Clothes, etc</u>				
Ayton Saddlery	10 - 6 Thur+Fri.Shut M,Tu,W	10am – 6.00pm	-	Open
PremierCollection	9.00am - 5.00pm -ish	9.00am - 5.00pm	-	Open
Seasons	9.00am - 5.00pm	9.00am – 5.00pm	-	Open
Spinning Wheel	9.30am – 4.30pm. Shut Mon + Wed	9.30am - 1.00pm	-	Open
Swan's Jewellers & Gift Shop	9.30am – 5.00pm	9.30am – 5.00pm	-	Open
9. <u>Services:</u> <u>Health</u>				
Chemist	9.00am - 6.00pm	9.00am - 5.00pm	-	Open + Pharmacy
Dentist	9.00am – 5.00pm	-	-	-
Undertaker - now H W Carter	Tel: 700208 (24 Hours) Office 9.00 – 5.00pm - as	before, for now.		
Health Centre	8.30am - 6.00pm (See <u>Written</u> repeat prescription	Page 29 for Tel. requests only.	Numbers)	12.30 – 1.30
Optician	See Stokeld & Stephens adv	on page 45		
10. <u>Services:</u> <u>Legal / Financial</u>				
Hill&Co Insurance	9.00am - 5.00pm	-	3 Guisboro' Rd	Open
Kitching & Kneale (Solicitors)	9.00am - 5.00pm Other times by appointment:	Tel: 723 713	-	Open
Nat West Bank	9.30am -1.30pm(10am Wed)	-	-	
Post Office at Worthy Pearson	9.00am - 5.30pm – 5pm Wed.	9.00am -12.30pm	-	Open
11. <u>Home and Garden</u>				
Acuframe	By appointment: 722 411	(Picture Framing)		
Bloomarie (Arcade) Florist	9.30am - 4.30pm – 5pm Fri.	9.30am - 5.00pm	-	Open
CaptCookSchool- Room Antiques	2pm-4.30pm Shut Mon+Thur Tel: 723 581	2.00pm - 4.30pm	-	
J. Harrison, Furniture&Interior	Flexible hours 724 236 even'gs / weekends			
Park Sq Collectables	10am – 4.00pm	10am – 4.00pm	-	Open
Sally Anne Interiors,ParkRise	1.00pm – 4.00pm Tel (01642) 725 000 &→	10am - 2.00pm 07879 658 108	-	Open

Shop/Amenity	Weekdays, excluding lunch	Saturday	Sunday	Lunch
<u>Home and Garden Cont'd</u>				
Thompson's Hardware	9.00am - 5.30pm	9.00am - 5.00pm	-	Open
Traditions	10.00am - 4.00pm	10.am – 4.pm	-	12.00 - 1.30
12. <u>Garages.</u>	<u>Cars, Bikes</u>			
Bike Traks	9.30am - 5.45pm Shut Wed. Open – 7pm Thurs.	9.30am - 5.45pm	-	Open
DFMotors (Station)	8.00am - 6.00pm	8.00am - 12 noon	-	Open
Frankfield (Pye)	9.00am - 6.00pm	9.30am - 5.00pm	-	Open
Imperial(W Eves)	7.30am - 9.00pm	8.00am - 9.00pm	9.00am - 8.00pm	Open
KildaleStore+P.O .Bicycle Hire	9.30am – 5.00pm Shut Wed. Tel: 722239	9.30 – 12.30pm	9.30 – 12.30pm	1pm-2.30 Tu - Fri
13. <u>Gifts</u>				
Premier Collection	9.30am - 5.00 (ish)	9.30 - 5.00	-	Open
Bloomarie(Arcade)	9.30am - 4.30pm. – 5pm Fri.	9.30am – 5.00pm	-	Open
14. <u>Leisure and</u>	<u>Learning</u>			
All Saints Church	Closed Nov – end of March (April - Oct: 2 - 4.30 daily)	Tel. 722 173 (see column left)	(see column left)	
Ayton Computers	12 – 5.30pm Mon 9.30 – 5.30pm Tues – Fri	9.30 – 4.00pm	-	Open
Ayton Saddlery	10 - 6 Thur+Fri. Shut M,Tu,W	10.00 – 6.00pm	-	Open
Book Emporium Bookshop	Shut Mon + Tues. 1 – 4pm Wed, Thur, Fri	10.00am- 4.00pm (Lunch 12 – 1)	Seasonal	Open
Cook Museum	Shut 1 st Nov – 31 st March (1 April – 31 Oct: 1 – 4 daily)	(see column left)	(see column left)	
Hook, Line & Sinker	10am – 4pm. Shut Mondays	10am - 4pm	-	12.00 - 1.30
Library	Closed Monday 9.30am - 5.00pm Tuesday 2.00pm – 5.00pm Wed & Fri. 9.30am – 7.00pm Thursday	9.30am -12.30pm	-	12.30 - 2.00
@ venue for conferences &....	9.00am – 5.00pm 16 High St	Tel: 724 454	-	Open
Tourist Inf. Point	Closes 31 st Oct. until Easter (When open:10am - 4pm)	<u>Tel 722 835</u> (10am - 4pm)	<u>Fax 724 960</u> (1pm - 4pm)	
Conservative & Unionist Club	12 noon – 11.00pm All times given, members only. Bar normal licensing hrs	11.00am-11pm	12 noon - 3.00pm	Open
Working Men's Club	1 pm - 11pm Mon -Thur & 11.30am – 11.00pm Friday	11.30am - 11pm	12 noon-11pm	Open

Shop/ Amenity	Weekdays	Saturday	Sunday
15. "Eating Houses"			
Joplins (High St)	7.00pm till late, Tues - Friday Shut Monday	7.00pm till late	
Park Square Coffee Shop	Mon + Tues closed. 10am – 4pm Wed - Fri	10.30am – 4.00pm	10.30am – 4.00pm
Tally's (Station Road)	10.00am - 4.00pm M, Tu, Fri Shut Wednesday & Thursday	10.00am – 4.30pm	12 noon – 4.30pm
The Cook's Room (was White's, High St.)	Mon + Tues closed. W – F: 12 noon - 2 + 6.30 - 9.30pm	6.30pm – 9.30pm	12 noon – 2.30pm
Whinstone View Bistro (Caravan Park)	11am – 11pm Tues. – Fri. Food: 12 - 9pm. - 9.30pm Fri Shut Mon	11.00am – 11.00pm Food 12 – 9.30pm	12 noon – 5.00pm Food 12 – 4pm
16. Hotels, etc			
Buck Hotel	12 noon – 11.00pm Food Tues - Fri 12 - 2.30pm & 5.30 - 9pm.	12 noon – 11.00pm Food 12 noon - 2.30pm & 5.30 – 9pm	12 noon – 10.30pm Food served 12- 3.00
Royal Oak Hotel Restaurant open 7.15pm – 9.30pm	10.00am – 11.00pm Food available 10.00am to 9.30pm except 2.00 -3.00pm	10.0am – 11.00pm Food 10.0am - 9.30pm except 2.00 - 3.00pm.	11am – 11pm Food 12 - 9.30pm except 2-3 + 6 - 6.30
The Newton Rose (Tilsheds, Newton Road)	12 noon - 12 midnight Fri - 1.00am	12 noon - 1.00am	Noon - 11pm
17. Taxis:	Remember the 3 Ayton taxi Roseberry Cabs 723 777	services to solve the Eclipse Taxis 723 699	Drink/Drive problem Ayton Taxis 722 448
18 Public Conveniences Park Rise	7.00am - 9.30pm in Summer 7.00am - 7.00pm in Winter	As weekdays	As weekdays

COLLECTIONS FROM LETTERBOXES IN & AROUND AYTON

	<u>Mon – Fri.</u>	<u>Saturdays</u>
1. Box at Ayton Post Office	5.30pm	11.45am
2. Newton Road (in wall opposite Tilsheds)	5.30pm	9.30am
3. Linden Ave/Capt Cook's Way/Linden Grove Corner	5.30pm	9.00am
4. Stone Bridge End (Low Green)	5.30pm	9.00am
5. Station Road/Little Ayton Lane junction	5.30pm	9.00am
6. Gt Ayton Railway Station (Bridge end)	5.30pm	10.00am
7. Gribdale	5.30pm	9.15am
8. Little Ayton	5.00pm	9.30am
9. Easby	5.00pm	9.30am
10. Newton under Roseberry	5.30pm	9.00am
Last collection at:		
Stokesley Post Office	6.00pm	12.30pm
Guisborough Post Office	5.45pm	12.30pm
Middlesbrough (Grange Road)	6.30pm	12.30pm

Notice

I understand that only these final collection times are now guaranteed, but there may also be collections at other times when possible. Ed.

Sunday Collections:

1. Box at **Great Ayton Post Office** 1.00pm
2. Box at **Stokesley Post Office** 12 noon
3. Box at **Guisborough Post Office** 1.00pm
4. Box at **Middlesbrough (Grange Rd)** 2.00pm

Ring **08457 740 740** for further information .

Please forgive any mistakes in this Section – but do tell me about them!

CONTACT YOUR LOCAL COUNCILLORS, MP, etc

Parish Councillors

Mr Peter Bell (Vice-Chair.)	43 Addison Road	722 767
Mr John Fletcher	Orchard House, 10 High Green	723 549
Mrs Frances Greenwell	51 Newton Road	722 966
Mrs June Imeson, OBE	12 Leven Court	722 175
Mr Ron Kirk (Chair.)	2 Rosehill	722 053
Mrs Margaret Stevens	34 Langbaugh Close	723 334
Mr Neal Waters	Apple Tree Cottage, Lt Ayton	724 000

Clerk to the Council: Mrs Louise Holden, 42a Marwood Drive, TS9 6PE **722 292**

email: clerk@greatayton.fsbusiness.co.uk

District Councillors:

Hambleton Offices: 0845 1211 555

Mrs June Imeson, OBE	cllr.june.imeson@hambleton.gov.uk
Mrs Frances Greenwell	cllr.frances.greenwell@hambleton.gov.uk
Mr John Fletcher	cllr.John.Fletcher@hambleton.gov.uk

County Councillor: Mr John Fletcher

cllr.j.fletcher-nycc@btinternet.com

NYCC Offices: (01609) 780 780

Member of Parliament: Rt. Hon. William Hague, MP

House of Commons, London, SW1A 0AA

Local Office: 67 High St, Northallerton, DL27 8EG. **(01609) 772 060**

Local MEPs: Yorkshire & Humber Region: 6 MEPs. See last issue for details (Library).

HOW TO HIRE HALLS IN & AROUND GREAT AYTON

FRIENDS MEETING HOUSE (High Green)	Now: Carole Avison	710 736
METHODIST YOUTH HALL	Ray Hopper	722 044
PAROCHIAL HALL (Guis. Rd) Mon,Thu, Fri morn:	OFFICE	722 665
ROSEBERRY SCHOOL HALL / CLASSROOMS	OFFICE	722 883
VILLAGE HALL (High Street)	Mrs T Thompson	722 068
W.I. HALL (Newton Rd)	Mrs Duffey	723 641
YATTON HOUSE (Guisborough Road)	OFFICE	722 380
VILLAGE HALL, KILDALE	Mrs Jane Mitchell	724 198
PURSGLOVE CENTRE, GUISBOROUGH	OFFICE	01287 610 234
CCA - rooms in Town Close Centre, STOKESLEY	OFFICE	710 085

ACCOMMODATION IN GREAT AYTON

A local Accommodation Guide is available from the Tourist Information Point in Summer (a list is displayed in Winter) giving more detail and covering a wider area.

<u>B&B</u>	<u>Name</u>	<u>Address</u>	<u>Contact</u>
	Sue Drennan	Crossways, 116 Newton Road	724 351
	L Johnson & M Denny	Traveller's Rest, 97 High Street.	724 523
	Mr & Mrs Lavender	Mill Farm, Stokesley Rd (Non-smoking)	723 939
	John & Christine	Bridge Guest House, 5-9 Bridge Street	725 236

Self-Catering

Holiday Cottage, Mrs A Gregory	Stable Cottage, Overbrook, Gt Ayton	724 226
Holiday Cottage, Mrs Larkin	Cleve Cottage (Sleeps 6)	724 426

Please contact the Editor (722 897) if you would like to be added to this list.

LIST OF ORGANISATIONS SERVING GREAT AYTON

There is a comprehensive file at the LIBRARY covering a much wider area.

TO KEEP THAT FILE & THIS LIST CORRECT, PLEASE TELL US OF ANY CHANGES!

Please let me know if you would like your email address here INSTEAD of your postal one.

Adult Education

Continuing Education	Mrs Sue Newman, Stokesley	718 518
W.E.A. classes	Marian Button	723 014
All Saints	Roger Arkell	43 Byemoor Avenue 722 173
Alzheimers Support Group	Mrs Jancie Brown	723 873
Amnesty International	Irene Macdonald	15 Farm Garth 722 262
Angrove Singers	Mrs Carol Morgan	22 Wheatlands 722 897
Ayton Angling Association	Mr Geoff Stephenson	31 Wheatlands 723 501
Ayton Allotment Assoc.	Bill Arnold	29 Roseberry Cres. 723 557
Ayton Toddlers	Julia Jewitt	723 636
B adger Protection Group	Mr Wood	711 336
Badminton (Ladies only)	Mrs Doreen Tate	40 Guisborough Rd 722 491
Badminton Club	Sue Young	722 349
Bereavement Care	Northallerton & District	(01609) 748 100
Bowls Club	Mr Mike Myers (Treasurer & Enrolment)	722 637
Bridge Club (Ayton)	Margaret Lunn	723 671
Bridge Club (Stokesley)	Mr J Borwell	73 Meadowfield 711 219
British Red Cross	Mrs Jancie Brown	723 873
C ancer Research (Yorks)	Mrs J Groves	67 Wheatlands 722 598
Carers' Support Group	Community Care Centre, Town Close, Stokesley	710 085
Chess	Mr P Archer	Stokesley Club (01609) 882 420
Childline (Fundraising)	Mrs Shuttleworth	Marwood Drive 725 321
Children's Society	Mrs Marina Charlton	1 Addison Road 723 087
Christian Aid	Kate Harvie	71 Roseberry Cres. 722 279
Churches Together in Ayton	Robert Lappin	11 Wainstones Close 722 624
Citizens' Advice Bureau	Northallerton	(01609) 770 309
Community Care Assoc. Commun. Care Centre, Town Close, Stokesley (over Library)		710 085
Conservative Assoc.	Mr R Kirk	2 Rosehill 722 053
CrashBangWallopTheatre Co.	Danny Greenhalgh	92 Newton Road 722 192
Crusaders	K & S Underwood	15 Roseberry Drive 723 727
CRUSE (Bereavement)	Unit 7, Bow St, Guis	Mon 10 -12, Thu 2 - 4 (01287) 610 734
<u>Dancing</u>		
Bradley School of Dance	Ms M Connelly	723 250
Old Tyme Dancing Circle	(Information please)	
Scottish Country Dance	Jo Chapman	805 443
Thompson School of Ballet	Thelma Thompson	55 Marwood Drive 722 068
Day Centre (Tues + Fri)	Dot Ellerby	Addison Rd 724 175
Day Centre for Elderly/Confused, Community Care Centre, Town Close, Stokesley		710 085
Diabetes UK, (S. Cleveland Branch)	Derek Waterworth	(01287) 635 053
Dramatic Society	Pauline Turner	62 Roseberry Cres. 722 096
Drop-In at Hollygarth	Mrs M Randall	724 709
F airtrade, Ayton & Stokesley Group	Mrs Barbara Hawkins	8 Byemoor Avenue 723 160
Flower Club	Mrs Val Oseland	27 Byemoor Avenue 722 332
Football & Cricket Club		
Football	Mr K Wilcox	1 Osprey Close, Guis. (01287) 635 758
Cricket	Mr N Thurlow	136 Roseberry Cres. 722 037
Freemasons, Ayton Lodge	Mr J Hillyer	723 138
G .A.S.B.A.G.S.	Mike Newton	mike@newton948.freemasons.co.uk 722 184
Guides, Brownies & Rainbows	Anita Huntsman	District Commissioner 710 909
Guide Dogs	<u>New local contact needed!</u>	Regional Office 231 666

H istory: Community Projects	Dan O'Sullivan		723 358 25
I nnner Wheel (Guis. + Ayton)	Margaret Topping	33 Langbaurch Close	723 080
J udo Club	Mr Alan Heron		294 840
L abour Party	Mrs B Hawkins	8 Byemoor Ave.	723 160
Ladies Circle	Mrs G Robson		595 823
Leven Art Society	Mrs S Heggs	The Mill, Great Ayton	722 864
Leven Club	Mrs Lucy Waring		712 365
Liberal Democrats	Mr Richard Short	102 Guisborough Rd.	723 236
Lip-Reading Classes	Mrs C Hayes	3 Bracken Cres. Guis.(01287)	634 517
Listening Service Tapes	Community Care Centre, Town Close, Stokesley		710 085
M ethodist 8 o'clock Group	Mrs M Whayman	19 Greenacre Close	722 700
Mothers' Union	Mrs F Young	90 Wheatlands	723 645
Multiple Sclerosis	Mrs Wendy Heald	15 Marwood Dv	722 635
N ational Council of Women	Mrs M de Wardt	Hunter's Lodge	722 409
Neighbourhood Watch Co-ord.	Mrs H Sillars	Dikes Lane	722 233
Newspapers: D&S Times	Robert Lappin,	11 WainstonesClose TS9 6LB	722 624
NSPCC	Mrs B Taylor	43 Skottowe Cres.	723 170
NY Moors Assoc.	Mr G Belbin	Angulon House, Faceby	700 535
O pen Doors	Secretary	17 High Green	
Over 60's Club	Mr J Greathead		722 072
P igeons: Homing Society	Mr Booty	29 Linden Grove	723 004
<u>Playschools:</u> 1. Mrs S Stephenson & Miss J Scott		W.I.Hall	724841/722 576
2. Mrs J Robinson		St. Margaret's Hall	722 868
3. L. Sturdy: Scallywags		Roseberry School	724 307
4. Mrs M Hopper & Mrs J Jewitt		Methodist Hall	722 044
R elate (Relationship Guidance)		0800 980 5907 or M'bro'	882 822
Riding for the Disabled	The Unicorn Centre		576 222
Roseberry Kids Club	Julie / Sandra		723 728 / 710 996
Rotary Club (Guis. + Gt Ayton)	Mr D P Sheldon	11 Stainsdale, Guis. (01287)	638 937
RSPCA	Great Ayton Animal Centre, Yarm Lane		724 016
S ave the Children Fund	Mrs Pamela Baker	7 High St, Gt. Broughton	711 066
Scouts, Cubs & Beavers	Mr Philip Walker	Kirby School Farm, Lt Broughton	711 503
Settlement Furniture Services			463 862
Social Democratic Party	Mr David Conroy	33 Roseberry Ave.	722 507
St John Ambulance	Miss Sharon Coles	Activities at Coulby Newham	280 910
T ennis Club	Mrs J Roberts	17 High St	722 033
The Arches	Mr Jim Lawton		722 797
Traidcraft	K & J Harvie	71 Roseberry Cres	722 279
Trefoil Guild	Mrs Sylvia Wall	37 Wheatlands	722 411
Twinning Association	Mr Lewis Maidens	17 Riversdene, Stokesley	711 438
U nited Nations Association	Mr R Stainsby (Chair.)	1 Linden Road	722 589
V ictim Support Group	Nick Firth & Mike Minter, Newby Wiske Hall	(01609)	777 771
V olunteer Centre	Community Care Assoc'n, Town Close, Stokesley		710 085
W ednesday Forum	Mrs M Mawston	22 Linden Road	722 160
Wildlife Assoc. (Ayton)	Mr Alan Bunn	16 PrimroseCloseGuis.(01287)	633 404
Wildlife Rescue	Mr Ken Bibby	Redcar	482 132
Women's Institute	Mrs Betty Breckon		724 228
Women Together	Mrs G Counter	53 Roseberry Cres	724 178
WRVS (Meals on Wheels)	Elaine Whitehead	Day Centre, Addison Rd	724 175
Y atton House Society	Judy Lindo, Manager	Y.H., Guisborough Road	722 380
Yoga	Jenny Earle		722 487

(Please forgive any errors – but **PLEASE TELL ME ABOUT THEM!**)

26 BUSES Traveline: 0870 608 2 608 (7am- 9 pm) Local: 672 240 From 18th June 2006

There are extra buses giving a half-hourly service between Guis. & Redcar from 7.03am-10.39pm

81 (+781*) between STOKESLEY, AYTON, GUISBOROUGH & REDCAR

Full Route: Stokesley, High St; Gt Ayton, High Green; Newton; The Voyager, Hutton Gate; Guisborough; Dunsdale War Memorial; Yearby; Kirkleatham Village; Redcar Clock then Bus Station.

MONDAY – SATURDAY		STOKESLEY – REDCAR		(Hourly)	*
Stokesley High St.	Hourly from 7.33am	(Sat. 9.33)	to 4.33pm	then 5.41 & 6.36	
Ayton	Hourly from 7.45am	to 4.45pm		then 5.53 & 6.46 (last bus!)	
Guisborough	Hourly from 8.06am	to 5.06pm		then 6.14 & 7.03	
Redcar Bus Stn	Hourly from 8.32am	to 5.32pm		then 6.40 & 7.28	
		REDCAR – STOKESLEY		(Hourly)	
Redcar Bus Stn	Hourly from 6.35am	(Sat. 8.35)	to 5.35pm	then 6.30	
Guisborough	Hourly from 7.03am	to 6.03pm		then 6.56	
Ayton	Hourly from 7.22am	to 6.22pm		then 7.12 (last bus!)	
Stokesley High St.	Hourly from 7.30am	to 6.30pm		then 7.19	

* When called 781 the service is supported by Redcar & Cleveland Council

29 between MIDDLESBROUGH, J.COOK HOSPITAL, AYTON & STOKESLEY

MONDAY – SATURDAY MIDDLESBROUGH TO STOKESLEY

Full Route: Middlesbrough Bus Station; Saltersgill Hotel; James Cook Hospital; Eagle Park, Fulford Way; Gt Ayton, High Green; Stokesley High Street.

Middlesbro' Hospital	Half-hourly from 8.00am & 8.30	to 7.00pm	SUNDAYS & BANK HOLIDAYS: NO SERVICE FROM 30TH APRIL '06
Ayton	8.21am 8.51	7.21pm	
Stokesley	8.49am 9.19	7.49pm	
	8.57am 9.27	7.57pm	

MONDAY – SATURDAY STOKESLEY – MIDDLESBROUGH

		<u>Not Sat.</u>			SUNDAYS & BANK HOLIDAYS: NO SERVICE FROM 30TH APRIL '06
Stokesley	Half-hourly from 7.03am & 7.33	to 6.03pm			
<u>Ayton</u>	7.15am	7.45	6.15pm		
Hospital	7.43am	8.13	6.43pm		
Middlesbro'	8.04am	8.34	7.04pm		

27 NORTHALLERTON for WEDNESDAY MARKET Esk Valley Coaches 01947 600 604

Starts at Whitby: **Ayton not before 10.20**; Stokesley 10.33; Buck Inn, Northallerton **10.58am**

Returning: Buck Inn, Northallerton **1.25**; Stokesley 1.50; **Ayton 2.03pm** Finishes at Whitby

FREE BUS! - TO AND FROM TESCO, EAGLESCLIFFE, ON FRIDAYS:

Newton **12.55pm**; **Ayton**: normal stops + **Hollygarth 1.00pm**; arrives Tesco **1.30pm** **Problems?**
Departs Tesco **2.30pm**; arrives **Ayton 3.00pm**; Newton **3.05pm**. **Ring the store 01642 416 300**

MOORSBUS NETWORK TIMETABLE: 01845 597 000 (T.I.P. or Library during the summer.)

Runs: Sun & Bank Hols: end of Mar to end of Oct. **DAILY** approx. school summer holiday period.

Plan Ahead for Next Year!

Hundreds of travel options such as links from Hull, York, Scarborough, Darlington, Hartlepool, Middlesbrough & Northallerton to Hutton le Hole, Danby, Castle Howard, Rosedale, Dalby Forest, Rievaulx Abbey, Sutton Bank & Helmsley. E.g. Moorsbus, leaving High Green at 9.35, would reach Rosedale Abbey (via Danby) at 10.45, returning 3.45, reaching Ayton at 4.25. A great day out!

FARES: (may go up) Inner Zone £3, or £6 per family. Outer Zone £6, or £12 per family. 0 - 4s free.

www.moors.uk.net/moorsbus

The Esk Valley Railway – Gt Ayton to Middlesbrough or Whitby – your local railway!

<u>MONDAY – FRIDAY</u>					<u>SATURDAY</u>				<u>SUNDAY TRAINS</u>	
M'bro	7.08	10.38	2.16	5.39	7.06	10.38	2.12	5.38	START AGAIN IN SPRING 2007	
Ayton	7.25	10.55	2.33	5.56	7.23	10.55	2.29	5.55		
Whitby	8.41	12.05	3.43	7.06	8.35	12.05	3.39	7.05		
Whitby	8.52	12.41	4.05	7.18	8.45	12.41	3.50	7.15	Please check by phone/online for re-commencement date or collect leaflet from Library.	
Ayton	9.58	1.47	5.14	8.24	9.51	1.47	4.56	8.21		
M'bro	10.18	2.07	5.34	8.44	10.11	2.07	5.16	8.41		
Change at Grosmont for North Yorkshire Moors Railway										

Train times may change from 10 December 2006 and fares from 1 January 2007

Ayton - Whitby trains also call at: Battersby, Kildale, Comondale, Castleton, Danby, Lealholm, Glaisdale, Egton Bridge, Grosmont, Sleights and Ruswarp.

Ayton - Middlesbrough trains also call at: Nunthorpe, Gypsy Lane and Marton.

New lower fares from September 2006:

Day Return on any train ONLY £3 to Middlesbrough, £7 to Whitby

+ New Duo fare to Middlesbrough: if two adults travel together the second travels for half price!

+ 33% off local fares with a Residents' Railcard: send £12 to EVRDC or renew for just £7.50.

Valid for extended post code areas: YO6, YO13, YO17, YO18, YO21, YO22, YO62, TS1 - TS14

Esk Valley Railway Development Company (EVRDC):

info@eskvalleyrailway.co.uk

The Travel Centre, Whitby Railway Station, YO21 1YN

www.eskvalleyrailway.co.uk

Trains operated by 'Northern Rail': 0845 00 00 125

customer.relations@northernrail.org

National Rail Enquiries: 08457 48 49 50

www.nationalrail.co.uk

Special Needs travellers in need of help please telephone: **08456 008 008**

THE NORTH YORKSHIRE MOORS RAILWAY

Trains run DAILY until 30th October

+ all 4 weekends in November + 1st 3 wkends in December + 21-23 & 27-31 Dec + 1-3 Jan.

1st 3 weekends in December 2nd & 3rd, 9th & 10th, 16th & 17th from Grosmont.

Trains leave Grosmont at: 10.00, 11.30, 1.45 & 3.15. Journey lasts approx. 65mins. Tickets **£9.50**

Trains leave Pickering at: 9.45, 11.30, 1.45 & 3.30. & include travel, a gift from Santa (under 12s)

Also on Thurs & Fri. 21st & 22nd Dec. only from Pickering. + Coffee & Mince Pies for adults.

All seats on Santa Specials must be booked in advance to be sure of a place (Filling now!)

There are usually trains running during **February** half term week, then on the last 3 weekends in **March**. A full service resumes in **April**. Leaflets will be available from the Library or T.I. Centre.

Pickering Station has been restored to 1937 condition; **Grosmont** Station to the 1960s.

The NYMoors Railway is featured in many films & TV programmes: Goathland as **Aidensfield** in "Heartbeat" &, more recently, as **Hogsmeade** Station in "Harry Potter & the Philosopher's Stone".

CAR PARKING: Available at Pickering, Levisham, Goathland & Grosmont Stations.

A Park-&-Ride is operated near Pickering on the A169 during Summer & on peak/event weekends

Toilets: At all Stations & on most trains. Facilities for the disabled at Pickering & Grosmont Stat'ns
Wheelchair access into carriages on most trains. Dedicated disabled coach on some services.

Unfortunately, can not accommodate wheelchairs on dining services.

Private Charter Trains & Dining Trains are available for business meetings or family celebrations.

Dining capacity 130. **BOOK EARLY** to Charter or to use the Pullman Dining Service.

1 – 5 day **FOOTPLATE AWARENESS COURSES** for people aged 16 – 70. Book in advance!

Tel: Pickering **01751 472 508** or Email: customerservices@nymy.fsnet.co.uk

Website: www.northyorkshiremoorsrailway.com

AYTON: BUCK HOTEL CAR PARK

Paper; cans (unsorted); clothes, etc for Salvation Army (in poly bags, please).

AYTON: LIBRARY

Double Knitting Wool for Save the Children (via Inner Wheel). Used stamps: various charities.

Laser & inkjet cartridges + unwanted mobile phones for the Scouts,

& your old **YELLOW PAGES** (at any time) also for the Scouts.

AYTON: ROSEBERRY SCHOOL collects paper.

AYTON: RSPCA CENTRE, YARM LANE

The Centre will gladly accept unwanted towels and blankets.

It is advisable to ring beforehand to arrange when to take them: **724 016**. (Tues - Sun 11 - 4)

AYTON: YATTON HOUSE

Bins for: paper, glass, clothes etc for Salvation Army. Books.

Cash for Trash! All **aluminium cans** left at Yatton House provide cash which is put towards the work of our Society. We recently raised **£100** for a delivery of squashed cans!

We accept to sell on: Books, toys, bric-a-brac, clean clothing,

Furniture - in re-saleable condition, please, & **not** foam-filled, due to Fire Regulations.

We use: jam jars, baby food jars, with lids please, for our jams, pickles & chutneys.

INDIVIDUALS IN AYTON

1. Stamps: Jen Winterschladen, Manor House, Low Green – for Canine Defence League.
2. Used Cards (**not** Christmas) for Children's Society: box, in Christ Church, or ring **724 153**.

ELSEWHERE:**STOKESLEY: AMENITY SITE, INDUST. ESTATE, STATION RD. (01609) 780 780 (now NYCC)**

Batteries, car batteries, cardboard, electrical equipment, engine oil, foil, gas cylinders, glass, scrap metal, soil and rubble, wood, Yellow Pages when new ones are issued – all to recycle. Clean textiles and books to pass on for further use.

Green waste for Composting. Resulting Compost for sale at £2.50 per 50 litre bag.

SITE OPENS; 8.30am. CLOSSES: 5pm Mar; 7pm Apr-Sept; 5pm Oct; 4pm Nov-Feb.

STOKESLEY: CO-OP (Ex - Safeway) Paper, glass, cans (unsorted). Plastic bottles.

Clothing, textiles, etc for Salvation Army (in bags, please).

TEESSIDE HOSPICE: eager to have **RAGS** (torn, dirty, painty, old clothing/material, old shoes & handbags for recycling); furniture (Fire Reg. labels on all items of suite). **Will collect: 816 390**.

CHARITY SHOPS: help them to raise money if someone might buy what you don't need.

There are 3 in Stokesley, as close as going to the Amenity Site to throw things away.

UNWANTED PHOTOGRAPHS: Write on back approx. date & location & send to: John Kirkham, Archivist, Barnardos, Tanners Lane, Barkingside, Ilford. Material for Social History research.

FURTHER INFORMATION **Local playgroups**: cardboard, paper, etc.

Play & Educational Resources Centre, Riverside Park, M'bro': (01642) **230 100**

Paper, cardboard, paints, fabric, knitting wool, buttons, etc. needed by the Centre, which trains child-minders, so needs resources to occupy a very wide age-range of children.

Opticians: are glad to receive your old spectacles for re-use in the 3rd world.

Hambleton District & Middlesbro' Councils produce comprehensive recycling guides.

Please let me know of any other items being collected for a charity in Ayton. Ed.

1. RINGING THE MILKMAN: (01642) 490 092, now **Greencroft Dairies**, Redcar
Office: 8 - 1 Mon - Fri, & 8 - 12 Saturdays. **LOCAL 24 hour ANSWERPHONE: 714 047**

2. CONTACTING GREAT AYTON HEALTH CENTRE

MON - FRI: 8.00 - 6.00 Tel: 723 421. SATURDAYS now Out of Hours (Closed)
OUT OF HOURS No: 722 444. This will divert you to NYED in York. They will ask your details & pass them to the Northallerton Primary Care Centre, who will ring you back.
SAME DAY APPOINTMENTS: ring after 8.30 for morning times & after 11.00 for afternoon ones.
REPEAT PRESCRIPTIONS: Please apply In writing, by post or by hand, and allow extra time for processing, especially if you wish the prescription to be sent to the chemist for you to collect there.

3. LOCAL CORRESPONDENT Darlington & Stockton Times:

ROBERT LAPPIN: 11 Wainstones Close, Gt Ayton, N.Yorks. TS9 6LB. (01642) 722 624.
email: robert.lappin1@ntlworld.com or leave items in the box at the Library.
DEADLINE: Preferably the **MONDAY** before publication (Fridays); latest - noon Tuesday.

4. HAMBLETON DISTRICT COUNCIL - New Telephone Number: 0845 1211 555.

All calls to the Council will be charged at local rate from anywhere in the Council's area.
Environmental Health, Planning, & Benefits Officers will hold surgeries at **new offices in Stokesley** during the week, as well as being permanently at the **Northallerton Civic Centre**.

5. LOCAL MONTHLY FARMERS' MARKETS (usually 9.00am - 3.00pm)

Your opportunity to buy locally produced food directly from the producers

STOKESLEY (8 - 3)	1 st Saturday	THIRSK	2 nd Monday
PINCHINTHORPE	1 st Sunday	BEDALE	2 nd Tuesday
GUISBOROUGH	2 nd Saturday	PICKERING	3 rd Monday
NATURE'S WORLD (M'bro)	4 th Sunday (10 - 2)	RICHMOND (8 - 3)	3 rd Saturday
NORTHALLERTON (8 - 3.30)	4 th Wednesday	LEYBURN (8 - 3.30)	4 th Saturday

Please contact me if you know of any changes or wish me to include any other venues.

6. LOCAL SCHOOL HEAD TEACHERS + SCHOOL POSTAL ADDRESSES & TEL. Nos.

MARWOOD CHURCH OF ENGLAND VC INFANT SCHOOL - Mrs VIVIANNE SMITH
Address: Low Green, Great Ayton, Middlesbrough. TS9 6NN **01642 722 389**
ROSEBERRY COMMUNITY PRIMARY SCHOOL - Mrs JACQUELINE WARBURTON
Address: Roseberry Crescent, Great Ayton, Middlesbrough. TS9 6EP **01642 722 883**
STOKESLEY SCHOOL (11 - 18) - Mr NORMAN CORNER
Address: Station Road, Stokesley, Middlesbrough. TS9 5AL **01642 710 050**

7. CITIZENS ADVICE BUREAU Website: www.hambletoncab.org.uk
Ring Northallerton **01609 770 309** (some appointments in Stokesley) or Redcar **01642 488 483**.
Office in Guisborough at 88 Westgate, Guis. TS14 6AP. Appointments organised via Redcar.

CHRIST CHURCH PAROCHIAL HALL

P A System and Loop for the hard of hearing

Available to Hire for Functions **Facilities for Disabled**

VERY COMPETITIVE RATES

Telephone Office for details: 01642 722 665 Mon, Thurs, & Fri. mornings

Church of England revpev@clergy.net

Sundays 8.00am Holy Communion, Christ Church
 9.15am Parish Communion, Christ Church with Sunday School & Crèche
 11.00am Come & Praise: Family Service, 2nd Sun. each month
 6.00pm Evening Service: Summer, in All Saints; Winter, in Christ Church
Wednesdays 10.00am Communion: Summer, in All Saints; Winter, in Christ Church
Newton under Roseberry: 11.00am Holy Communion, 1st & 5th Sundays. All Age Service 3rd Sunday

Vicar: Canon Paul Peverell, The Vicarage, off Guisborough Road. 722 333

Office: Mon, Thurs & Fri mornings: 722 665. Email: greataytonparishoffice@btopenworld.com

Methodist Church

Office: Tues 12 - 3; Thurs 9 - 3, term time. 724 080

Sundays 9am Traditional Worship. Holy Communion monthly.
 10.30am Preaching, then all-age prayers & praise. Rock Club 3-13s. Holy Communion monthly
 6.00pm Sunday Service. 2nd Sun's united with Christ Church. 3rd Sun's usually Healing Service
 Weddings, Baptisms & Funerals by arrangement with the Minister.

Minister: Rev. Catherine Hutton, 30 Guisborough Road. 722 437

Religious Society of Friends (Quakers)

Sundays: 10.30am Meeting for Worship

Wednesdays: 10 - 10.30am Meeting for Worship, followed by coffee.

Clerk: John Bayes, 2 Glendale, Guisborough, TS14 8JF. (01287) 634 345

Asst Clerk: Kate Allen, 4 Hill View Tce, New Marske, TS11 8EP. (01642) 489 748

Roman Catholic Church

Saturday 6.00pm Mass - fulfils Sunday obligation
 Sunday 10.30am Mass
 Wednesday 7.00pm Mass

Aytoun Representative: Mrs Ann Pickering 98 Marwood Drive 722 728

Priest: Rt. Rev. Mgr. Ray Charlton, St Joseph's, Tanton Rd, Stokesley 710 239

Jubilee Church Wednesday 7.45 to 9.30pm Friends' Meeting House High Green. Alt. weeks, for teaching, worship, coffee. Sun: McMillan College, 10.30am: Jonathan Knight 01642 318 147

USEFUL VILLAGE TELEPHONE NUMBERS

EDITOR of The Stream 722 897 Carol Morgan

Adverts (£10 squares) 723 014 Marian Button

Community Care Centre 710 085 Stokesley

Volunteer Car Drivers: Community Care, as above

All Saints' Church 722 173 Roger Arkell

Guides & Brownies 710 909 Anita Huntsman

Scouts & Cubs 711 503 Philip Walker

Tourist Information Point 722 835

Traidcraft + Christian Aid 722 279 The Harvies

Yatton House 722 380 Manager: Judy Lindo

Parish Clerk: 722 292 clerk@greatayton.fsbusiness.co.uk

AYTON LIBRARY 723 268

Stokesley Library(local rate) 01609 533 461

Stokesley Leisure Centre 711 140

N.T. Events/Volunteers 01751 460 396

Guisboro' Forest Walkway 01287 631 132

LOCAL SCHOOLS

Marwood C. of E. Infants 722 389

Roseberry Community Primary 722 883

Stokesley Comprehensive 710 050

MILKMAN 490 092 (8-1 M-F, 8-12 Sat)

24hr Answerphone 714 047

NEWSAGENT Park Square 722 345

TAXIS Aytoun Taxis 722 448

Eclipse Taxis 723 699

Roseberry Cabs 723 777

Airport Connection 319 195

Dog Warden
01609 767 104

HEALTH

Aytoun Health Centre 723 421

Out of Hours 722 444

Aytoun Chemist 722 254

HOSPITALS: James Cook University Hospital,
 Marton Road, Middlesbrough 01642 850 850
 or 01642 8545 plus the Ward no. (eg 3 or 14)

Guisborough General 01287 284 000

Friarage, Northallerton 01609 779 911

Mental Health Support 01609 780 758

PUBLIC TRANSPORT: 0870 608 2 608

Buses: Arriva T.N. 0870 602 3322

Leven Valley 01642 722 068

Trains: Northern Help: 0845 600 11 59

Esk Valley Devel. Co. 01947 825 885

NYMR Pickering 01751 472 508

POLICE: Non-Emergency Central Switchboard: 0845 60 60 247 & ask for Stokesley.

Luigi was swimming off the coast of Italy with his brother Mario. Suddenly Luigi spotted a fin on the horizon coming rapidly towards them. Mario swam to the beach but - where was Luigi?

Charles K and Megan S

John was sleeping. In the night, BANG! He was awoken. He screamed a girly scream. AHHHHHHHHHHH! He crept out of his bed, scared and shivering as he crept down stairs. Then all so suddenly he saw an ugly green light outside. He looked outside the window and AHHHHHHHHH! A big, green, ugly spaceship outside the window.

Kaitlin Enderwick and Iain Fraser

"Get there Bob tackle him!"
"Get it up the line Bob!"
"Cross it Bob!"
"On your head Tom!"
"Shoot Matty!"
"In off the post GET IN!!!!"
"GOALLLLLLL!!!"
"Like watching Brazil lads"
"Well done Teesside"

*Joseph Marsay and
Jonathan Boal*

My Pig Can

My pig can ride a bike
My pig can go to school
My pig can tell the time
My pig is really cool!

My pig can count to ten
My pig can climb a wall
My pig can build a house
My pig can't oink at all!

*Phoebe, 7,
Jamie, 6, Tomos, 6*

My Shark can

My shark can play a game
My shark can go to the park
My shark can build a tower
My shark can see in the dark!

My shark can watch TV
My shark can jump off a wall
My shark can ride a bike
My shark can't bite at all!

Jack, 6.

My Rabbit can

My rabbit can do the shopping
My rabbit can build a house
My rabbit can write a note
My rabbit can catch a mouse!

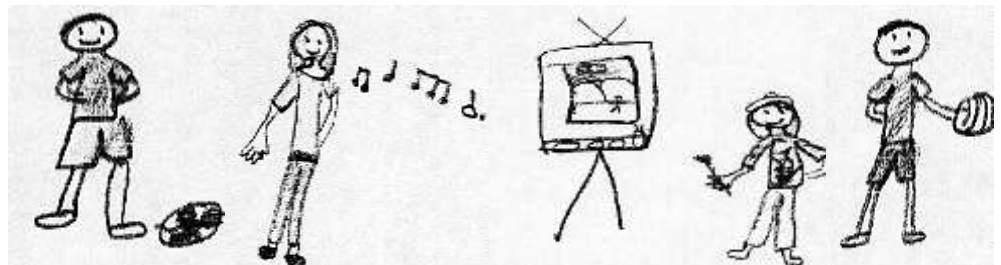
My rabbit can swat a fly
My rabbit can make a call
My rabbit can do PE But
My rabbit can't hop at all!

Holly and Katie, 6.

PLAYTIME

Roseberry school has lots of play equipment. Indoor or outdoors. We dash around at playtime having a great time! We have a playing course with chains and swings. We also have balls, bats, hoops. We love it! It's very good! We use the play equipment nearly every day! We also use it in PE and gym clubs. The equipment we have makes play time very exciting! We have so much fun! It's great!

Eleanor McGough, Yr 4



COOL CLUBS

Teachers from Roseberry School give up their time after School to do Clubs. The clubs are: football, Art, choir, dance, puppets, basketball and gym. The teachers make after school more fun. All of these clubs appreciate what the teachers are doing. These clubs also help improve on the subject it is based on.

Kayleigh Coates, Yr 4

BEAUTIFUL GARDEN

At Roseberry School we have been digging 100s of potatoes! We have also been picking loads of tomatoes! They have been Beautiful sun flowers growing as well. This is all because of Mrs Wills and the children and the hard work they have been putting into the sensory garden.

Daniel Houldsworth, Yr 3

Jubilee Church is a vibrant, growing community of around 350 members based in Teesside. We meet every Sunday at McMillan College, Stockton Rd, Middlesbrough, TS5 4YU @ 10.30 am. We also have mid-week smaller gatherings in different places across Teesside (including **The Friends Meeting House, High Street, Great Ayton**). We have been established now for 7 years & are part of the 'Newfrontiers' family of churches www.newfrontiers.xtn.org

Our church is made up of people of all ages (youth, students, children, adults) & different cultures.

Our vision is to build a large Teesside based church, relevant to the needs of its population.

Presently we are involved in the following different areas serving Teesside:

The Alpha Course. Thought-provoking & fun 10 week course designed to explore Christian faith

Open Door. Our social action arm helping underprivileged people across Teesside

Big Groups & Small Groups. More intimate settings to make & meet friends & share ideas

The Marriage Course. A 7 week course aimed at ALL married/co-habiting couples discovering together key principles that promote strong, long lasting marriages

Entertainment. Great evenings of music, sport, live shows, & much much more!

A great opportunity to meet new people!

Youth & Student & Children's groups. Encouraging & supporting guys & girls across Teesside

For more information please contact: Jubilee Church website: www.teesside.org

Raj & Charlotte Saha: raj@teesside.org or **01642 725 076**

or Jeremy & Ann Simpkins: jeremy@teesside.org or **01642 722 622.**

Office: Jubilee Church Teesside, Hope House, 1 Grange Road, Middlesbrough TS15BA .

Yatton House Society

We would like to take this opportunity to thank the local community for their on-going support and interest in Yatton House.

Yatton House continues to offer valuable support to adults with Learning Difficulties to participate in new and rewarding activities, enabling them to gain essential skills in both recreational and educational activities. Yatton House has opened its doors to the wider community, enabling new people to have the same access to what is on offer, thus adhering to the Government's White Paper: 'Valuing People', offering choice, inclusion, well-being and independence.

Yatton House already has a successful **Pantry every Wednesday** and as part of the modernising Day Care Programme, the dining area will be having some much needed refurbishments, including an extension to give an air of comfort and relaxation, while enjoying the home cooking from Lynda and one of our service users, Clare, who at this present time has completed her food hygiene training.

Yatton House has sought funding to improve and extend the printing service by installing a state-of-the-art printing machine, which will be run with the help of another of our service users.

It is hoped that this will be part of the supported employment scheme.

If anyone is looking for a room or building to hire, then why not contact Brenda, Yatton House Secretary, to find out about our competitive rates?

Judy Lindo, Manager

After some 2 years of work we have just published our book on Roseberry Topping. This has been a massive undertaking. We hope that everyone who knows and loves Roseberry will be pleased with the results. The book has been produced through a partnership between our group and Joe Cornish, our local photographer. We have researched and written the text, and Joe has provided some wonderful photographs. All aspects of the mountain are covered, including its name, geology & geography, farming & fox hunting, beacons & bonfires, witches & wildlife, mines & maps, accidents & rescues, and Roseberry's appearances in art & literature. We have been amazed at the amount of fascinating history associated with Roseberry, much of it not published previously. Indeed, we have struggled to keep the book down to 208 pages.

A few snippets about the Topping:

- *19th century illustrations of the Bronze Age axes and other tools, found on the Topping in 1826, cast doubt on the authenticity of some of the 'Roseberry hoard' displayed in a Sheffield museum.
- *The earliest map of Yorkshire, from 1577, shows what may be a beacon fire at the summit. This would have been before the beacons set up in Elizabethan times to warn of the Spanish Armada. Incidentally, this map also shows Bilsdale covered in trees, which were later all cut down to feed the Rievaulx Abbey iron-making business.
- * In one of Sir Walter Scott's lesser-known novels, *The Pirate*, there is a character who was born at the foot of Roseberry Topping. How did Scott know about our mountain?
- * The famous Roseberry Well, with its reputation for curing sore eyes, can still be seen near the summit. This is the place where legend has it that Prince Oswy was drowned, though it is difficult to imagine this happening today as the well has been reduced to a mere damp patch of ground.
- * There is a Roseberry Topping in Wales, and there are Rosebery apples and potatoes.

As with all our researches, there is always more to do. We would like to find if there is any basis for the Roseberry Well curing sore eyes, why the large scoops were cut out around the upper slopes, and exactly how the first Lord Rosebery came to take his title from the Topping. Above all, the origins of the summerhouse remain a complete mystery. We hope that the publication of the book will bring forth more information and pictures, and perhaps lead to some answers to these and other questions. Do join in: new members are always welcome. **Ian Pearce**

If you would like to join us: we meet **every Wednesday, 9:30 am** in the Friends' Meeting House. Do come, or ring: **Dan O'Sullivan: 723 358** or **David W Taylor: 722 748** or **Ian Pearce: 722 964**

If you would like a copy of the book:

please contact **Ken Taylor: 722 400** or **Hazel O'Sullivan: 723 358**. It is **£27.50** and would make an excellent Christmas present! We will deliver free within a 5-mile radius of Great Ayton.

THIS PAGE HAS BEEN SPONSORED by THE BRADLEY SCHOOL OF DANCE

St Margaret Clitherow Roman Catholic Church at Gt Ayton was packed for the funeral and Mass of Celebration for the life of Don Pickering, the well-known and much-loved organist, who died suddenly on April 13th, his 70th birthday. The celebrants were Mgr Ray Charlton, Parish Priest, Mgr Seamus Kilbane, an old friend of the family, and Fr Anthony Storey, former Parish Priest.

Mgr Charlton said that he counted Don as a close and personal friend for many years. He was a dedicated member of the parish and had played the organ for more than 30 years, starting long before the present church was built, playing a donated pedal harmonium in St Margaret's Hall. Mgr Charlton concluded: "He was a truly delightful person, with a generous, pleasant disposition, always smiling, a gentleman in the true sense of the word, and was God's gift to us." Don joined his wife in preparing the Ayton church for Mass on Saturday evenings and Sunday mornings.

An only child, Don was born in Teesville. On leaving school, wishing to pursue a career in electronics, he enlisted in the RAF and did a training course in that subject. He was posted to Kenya, where he completed his short-term service contract before returning to live in Teesville. He then obtained a job with the TV rental firm, Rentaset, covering a large rural area from Stokesley to Egton. He met his future wife, Anne, in 1958. They married in 1961 and settled in Ayton, where they bought the bungalow in which they have lived ever since. They have always said that moving to Ayton was the best thing they had ever done. Don was next employed by Shell at Teesport, but his department closed in 1985 & he was offered work in Saudi Arabia. It was a big wrench to go there, but he remained in the job for 15 years, enjoying his home leaves.

Don took a keen interest in the education of their daughter, Catherine, and was elected a Governor of the school. He also supported her interest in Connemara ponies, travelling with her to shows all over the country. He was delighted when Catherine's pony, Marwood's Doon Caedmon, won the Pony of the Year title at Olympia in 1995.

He was a keen photographer and enjoyed reading. He liked to participate in village activities and organised many quizzes for charity. In general, he loved life and approached all activities calmly, but with enthusiasm.

Don's grand-daughter, Frances, was born in 1999 and she quickly formed an affinity with him. They loved each other's company and Don had started to teach her to play the organ. Don was a keen organist. He played the organ at the 10.30 Mass at Great Ayton and also, on a rota basis, at the 9 am Mass at Stokesley. Years ago he played at all four weekend services in both churches. He loved a wide selection of music, in particular classical church music, organ music and especially the music of J S Bach. A performance in the church by The Angrove Singers of Music for Good Friday, the day after Don's death, was dedicated to his memory.

He will be sadly missed.

Paul Pearson, son-in-law.

Now that I have attained my Eightieth Year, and close on 50 in the priesthood, it seems a good time to look back over the years and reflect upon the past. Having become an octogenarian I wonder what all the fuss was about in being 80!! Apart from the fact that members of my family and close friends gave me presents, the day seemed pretty much the same as any other day. The sun rose in the morning and set in the evening, yet in some way the implications did not strike me. It is true, I had read psalm 90 in my devotions for years, where the usual term of human life is proclaimed as threescore and ten, and here I was ten overdrawn or, as one close friend reminded me, "You are well past the sell by date." Hence it seems wise, while I have the mental faculties, to impart any lessons gleaned through the years.

Looking back, I realise how my prayer life has matured. No longer is it a long list of petitions and intentions, No longer remorse for past failings, rather a confidence in the love and mercy of my Divine Redeemer. With the passing of years there is more time for prayer and a closer familiarity with God the Father, His Divine Son, and His Blessed Mother. A time for thoughtful reflection. God in mysterious ways calls us each and every one to Himself.

It seems to me that every committed Christian has established his or her own method of prayer. For some it is almost a permanent reality, for others an occasional gift lasting perhaps but a second, but deeply moving and significant for all that. A consciousness of God's presence in their lives: in effect, a mystical experience. For many, like myself, it is through the wonder of creation that the supernatural is first encountered and the spirit is lifted to realms that are far above the human condition, almost incapable of expression.

I can recall Cardinal Hume narrating how on one occasion he was out walking in the Cheviots. It was anything but an ideal day: there was a persistent drizzle, and mist reduced visibility to a few yards - in short, it was miserable. Quite unaccountably, the mist suddenly lifted, there was a shaft of sunlight, and in that moment a most breathtaking panorama was revealed. The distant coastline, with a turbulent sea, gulls wheeling. He said, "I just stopped in my tracks, spellbound, captivated by the scene before me – how long I do not know, maybe a second, perhaps much longer - but transfixed, and conscious of the Glory of God in His creation."

It was during my time in the Royal Navy that I found a deep appreciation of the wonder of creation, and God's presence in the natural order. No one, I believe, can witness the ocean in all its moods and not be moved to lift up his heart in prayer. I came to love the natural wonder of creation.

Until this experience I was little more than a nominal Christian, but the sense of the supernatural that I encountered, being at sea and seeing the vast ocean and seemingly infinite sky, developed a spiritual life that is with me still. The words of John Masefield's "Sea Fever" come to mind: I have felt on my face the "wind like a whetted knife" and seen the "grey mist on the sea's face and the grey dawn breaking". The memory is with me to this day. I suspect it was such an experience that made the psalmist exclaim, "mighty seas rage; greater above these does the Lord reign."

I share these thoughts; they have helped me to see the face of God.

It may be that they may help others too, in life's pilgrimage.

Mgr Ray Charlton

GREAT AYTON CRICKET & FOOTBALL CLUB NYSD 2006 PREMIER DIVISION CHAMPIONS!



Two years ago to the day I explained the significance of retaining our N. Yorkshire & S. Durham Premier Cricket League, Premier Division, status in our first season in the division.....

This season the Club Committee, with the aid of Cricket Team Manager, Dave Pennock, Director of Cricket, Norman Thurlow, & our talented Club Cricket Captain David Grainge, decided that to compete at the top level we needed a professional strike bowler to assist us in bowling sides out.

Thara Gunarathne, our original professional from Sri Lanka, was released (he had a successful season at Hartlepool); our England qualified pro, Darren Hickey was completing the 2nd year of a two year contract; a South African from Capetown, Rory Kleinveldt was signed, but at the last minute his Club refused, to allow him to join us (concerned about the ever increasing “Burn Out” in young cricketers). Dave Grainge then pulled off a master stroke by pursuing & eventually signing his original choice, 21 year old **Muhammed Riaz Afridi** from Peshawar, Pakistan. “Rio” arrived after we had won our first match basically without any pro’s as Darren was nursing a “dodgy” hand, an injury that sidelined him from mid-June to the end of July. He was replaced by a 21 year old Yorkshire Academy batsman from Whitby, Chris Batchelor, who served us well.

Rio’s first match was at Marske & he was somewhat perturbed that we had to bat first as he was raring to bowl! We got off to a good start & at the fall of the 2nd wicket we were 95 for 2. We were led to believe that Rio was a “hard hitting” batsman whose forte was his bowling. He sat, with pads on, champing at the bit to get started – so David decided to elevate him to number 4! He scored 135 not out in 81 minutes with 6 fours and 14 sixes!! His 50 came off 32 balls & his 100 off 60. He peppered the streets of Marske around Windy Hill Lane with hitting that locals had never seen the like of before, & they have seen some real innings over the years. He followed up with 5 wickets for 48 & a win by 144 runs. What a start! His season contributed 97 league wickets at an average of 14.48, & 640 league runs at an average of 49.23. His full season’s figures were 114 wickets & 752 runs in 31 matches, including 9 wickets for 6 runs to clinch the championship against Darlington RA, when their 10th batsman went AWOL ! Chicken !!

On Sunday 3rd September, with Leven Park brimming with spectators, we achieved our goal, the NYSD PREMIER CRICKET LEAGUE, PREMIER DIVISION, CHAMPIONSHIP, a feat akin to Darlington FC winning the FA Cup! DAVID and his team had achieved the impossible according to most of the area’s cricketing pundits. It was a tremendous achievement and a real TEAM effort with every squad member contributing at least one match winning performance. The village can be justly proud of their mainly home-grown team.

The Cricket & Football Club generally has also progressed significantly in the past 2 years, particularly in the encouragement of the youngsters of the village & immediate area. Our junior sides have increased to 4 cricket teams (under 11,13,15,17) & 5 junior football teams (under 10,11, 12, 14,16) in addition to 3 senior cricket sides and 2 senior football sides plus an over-35 outfit. The Club has gained ECB “Clubmark” accreditation for cricket & FA Charter Standard for football, set by the NGB, National Governing Bodies for sport & are essential in the running of sporting clubs. We have our own club Child Welfare Officer & with the training volunteers & coaches have we can ensure that your children are in “safe hands” while learning to be sports stars of the future.

The **Clubhouse** number is **723 723**. Any budding footballers, contact: **37**

Bill Hamer 725 318, whilst cricketers should contact **Norman Thurlow 722 037**.

If there is anyone out there interested in organising **girls or ladies cricket or football** **PLEASE**
CONTACT US. **Ray Speed. Hon. Sec. 722 121**



**On behalf of all at the Club, many thanks for all your support over the years.
We look forward to welcoming you or yours to the club in the near future.**

Great Ayton's Own Day Centre

We are a North Yorkshire County Council *Adult & Community Services Day Centre*, held in Addison Road, Gt Ayton. We can accommodate up to 10 people each day & at present all are ladies. We operate 2 days a week: Tuesdays & Fridays. The ladies are transported to & from the Day Centre by mini-bus or taxi. We have a number of volunteers who help out on a monthly rota basis, & one helper who kindly comes in every day after lunch.

We begin with morning coffee & biscuits, then a 2-course lunch & an afternoon cup of tea with extras: chocolates, sweets & sometimes ice cream. In between these we discuss the news of the day & anything of interest in the village. The ladies often like to share with their friends what they have been doing or where they have been on the previous days.

We read newspapers & magazines, enjoy poems & short stories, & do a number of activities, including playing cards, participating in gentle chair exercises, & listening to music. At the end of the day we have a general knowledge quiz which everyone has the opportunity to join in, to their great enjoyment.

We have occasional trips out for lunch – we have recently been to Grinkle Park Hotel, having a detour on the way across the moors via Castleton & Danby. We all enjoyed this very much – the heather on the moors was beautiful & the venue and lunch were superb. Earlier in the year we had lunch at the King's Head in Newton under Roseberry, which was also delightful.

We sometimes have coffee mornings to raise money for our outings & extras, but when we hold our next one, on October 10th, we are giving the proceeds to the “Angel of Hope Fund”, a very worthy cause. Our friends, the *Sallywags* nursery from Roseberry School, come to sing for us each term & everyone looks forward to that occasion - the small children singing together, & some by themselves, is a joy to see & hear. At other times a lady brings her electric organ so we all have a good sing-song. We celebrate birthdays with a present & card, & all enjoy a cake, kindly made for us by a previous attender's daughter. There are balloons & a celebratory atmosphere all round as we sing “Happy Birthday” to the Birthday Girl.

Everyone enjoys their 2 days each week at the Day Centre, including myself. It gives the ladies an opportunity to share experiences & keep their minds active. I thoroughly enjoy assisting them to do this & the ladies want to say that they greatly appreciate all I do.

Referral for a place at the Day Centre is via Social Services. Do ask, if you have a relative who would benefit from joining us. If you would like to volunteer your help (or make a donation towards our “extras”) please call me at the Centre on Tuesdays or Fridays: **724 175**.

Dorothy (Dot) Ellerby

At the time of writing, we are looking at Giving at Christ Church, and in the process debunking a few popular myths about the Church. Here are some of them.

The Church of England is very rich.

On paper, so are you if you are a home owner in Gt Ayton, but it is not the same as having the income to pay the bills. Most of the Church of England's assets are in buildings to house the clergy or in churches. There are certain artefacts that are valuable, but these are part of our heritage and not easily disposed of. The Church Commissioners have investments, but have more calls upon these for clergy pensions etc. than they can cope with.

The Church of England receives Government money to pay the bills.

In the UK churches do not receive direct state help. The Gift Aid scheme allows us, like any charity, to reclaim tax on donations. Listed buildings can now reclaim VAT on repairs, but that's it. All the rest to pay for the Church to be available for the community to use for baptisms, weddings, funerals or other occasions comes primarily from congregations. It costs around £9,000 a month to run Christ Church and do the things we want to do in helping others. This year we will have paid £54,000 towards pay for the Diocesan clergy. i.e. our own Vicar and one in a poor parish elsewhere, and as Christians we help support many causes and charities locally, nationally and abroad.

The Vicar does well with all these weddings and funerals.

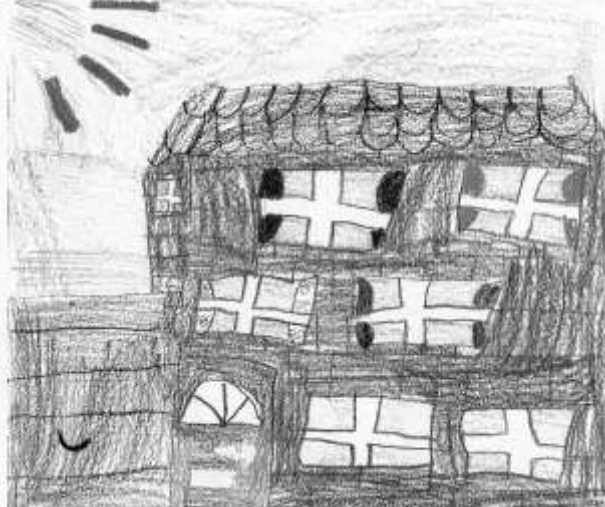
Overheard in the Church drive, but sadly not the case. All C of E parish clergy are paid exactly the same, no matter how few or how many weddings and funerals they take, or how well or badly they take them. This is because some parishes have lots of such services and others none. All fees collected for the minister go straight to York to help towards stipends. If you come to Christ Church for such a service and feel it was a job well done, that is down to job satisfaction.

We are fortunate at Christ Church in having a good sized congregation, but the maintenance of three buildings – Christ Church, All Saints and the Parochial Hall – and meeting all our commitments, can be very demanding at times. If you value this, please support it so it is there for future generations.

Paul Peverell - Vicar

THIS PAGE HAS KINDLY BEEN SPONSORED

The children are pretending to be Estate Agents selling a desirable (imaginary!) property ...

<p align="center"><u>Brooks Estate Agents</u> (Isabella)</p> <p>A Bungalow. The Address is 28 Middlesbrough Lane.</p> <p>5 rooms, 1 kitchen, 2 bedrooms, 1 little playroom and 1 bath room with only 1 toilet.</p> <p>In the garden are grass, roses daffodils, fruit trees and vegetables.</p> <p>The house has a garage and a burglar alarm.</p> <p>It costs £1000</p> <p>View on Wednesday 3 o'clock and Sunday 10 o'clock.</p>	<p align="center"><u>Bourne's</u> (George)</p> <p>7 Low Green, Great Ayton, Middlesbrough, TS10 26T</p> <p>Detached house.</p> <p>Inside there are 3 bedrooms and 3 floors, 1 toilet, 1 kitchen and 1 living room.</p> <p>Outside there is a big garden and big piles of flowers.</p> <p>A swimming pool, a bike rack and a climbing frame.</p> <p>Price. £70. 94</p> <p>Opening times: Mon to Fri 9:00 AM to 5:00 PM Sat 10:35 AM to 4:45 PM. Sun closed.</p> <p>Tel: 01642 72622849</p>
<p align="center"><u>Northeys Estate Agents</u> (Elinor)</p> <p>This house is a detached</p> <p>Its address is 37 Marwood Drive Great Ayton</p> <p>11 rooms, 1 kitchen, 1 lounge, 1 playroom, 1 dining room, 1 cloakroom, 3 bathrooms, and 3 bedrooms. It has 3 floors, ground floor, first floor, and second floor. It has a garden, a garage and a pond. The garden has flowers in it.</p> <p>Price is £118,000.</p> <p>Viewing times 9:00 am to 6:00 pm Mon to Thurs.</p>	
<p align="center">Finchs (Amy)</p> <p>12 Easby Lane Great Ayton Semi detached</p> <p>First Bedroom: You can see some hills out of the window and there is a cupboard with mirror doors.</p> <p>Second Bedroom: If you look out of the window you can see the garden and the airing cupboard is in there too.</p> <p>Bathroom: There is a bath, shower, toilet and sink. There is a little cupboard.</p> <p>Kitchen: There are lots of cupboards and there is an oven.</p> <p>Living room: There is gas fire and a nice hearth.</p> <p>There are really lovely cream walls and you can see the back garden.</p> <p>There are really friendly neighbours and there are lovely plants and there is grass and you have a patio</p> <p>Price: £3000 View on Wednesdays and Tuesdays 11.00 till 1.00 Thursdays 10:00 till 12:00.</p>	<p align="center"><u>Hutton's Estate Agency</u> (Joel)</p> <p>The type of house is a flat.</p> <p>The address is 27 Newton Street, Great Ayton.</p> <p>The flat that is for sale is no. 6.</p> <p>On the outside, it has a tennis court, a golf course, beautiful flowers, a football pitch and a balcony.</p> <p>The price is £220,000.</p> <p>The opening times are Monday to Friday at 9 o'clock in the morning.</p> <p>The telephone number is 722789.</p> <p>Thank you</p> <hr/> <p align="center"><u>Tierneys Estate Agents</u> (Hamish)</p> <p><i>A detached house, number nine Great Ayton, Roseberry Drive TH2 4GL.</i></p> <p><i>The rooms are living room, kitchen, 3 bedrooms, toilet and attic.</i></p> <p><i>Outside there is a side gate, hedge and flowers. Also there is a balcony, smoke alarm and woods nearby.</i></p> <p><i>The price is £105.</i></p> <p><i>Viewing time 1 o clock this afternoon</i></p> <p><i>Tel. number 424523</i></p>

Ronnie Shore, who lived in Bradley's Row, was the local watch and clock repairer, known in the village as Clocky. Like many other business people in the village, he turned his 'front room' into his business premises. He was also in the long-disbanded, Great Ayton Male Voice Choir.

There was **Jack The Bellman**. He was a familiar sight touring the village on his push-bike, standing at the street corners telling the locals what was taking place in the village the following week – a sale of work in the chapel schoolroom one afternoon, or a whist drive and dance in the Parochial Hall (the WI Hall not being built at that time). He also kept people informed as to what was on at the movies the following week - also in the Parochial Hall - silent films, with back-ground music provided by a pianist. (Jack Readman's Bell is now displayed in the Library.) Then there was **Tom Kirby**, my uncle, who was the collector of news for various local newspapers. He was also a familiar character to be seen on his bike, wearing a trilby hat, with a cigarette in his mouth.

Geordie Martin was a local window cleaner and chimney sweep – at the 'top end'. Often his form of transport was an old handcart which he used to convey his ladders and sweeping equipment. At the 'bottom end' of the village was **Joe Jenkins**, also a chimney sweep. His form of transport was a pushbike - he used to fasten his rods and brush onto the crossbar of his bike. Joe would often be seen early morning, before the fires were lit, or in the spring or summer months in the eventide after the fires had died out. Joe often wore a black cap and smoked a pipe.

The village welcomed the pioneers of the omnibus - **Alf Dunning & Ted Johnson**, when their bus service linked Ayton to Teesside and outlying villages - a service created then and still running.

I believe the GPO at that time only employed ex-servicemen. We had **Alf Bridges**, who lived just off High Green, along with **Jim Smith**, another WW1 veteran, who lived up in Southfield Terrace (California); **Long George Johnstone** lived in Station Road - a Boer War veteran and a very prominent figure in the Remembrance Sunday Parade, which then mustered at Langbaugh Corner and marched through the village headed by Gt Ayton Prize Silver Band, with Long George carrying the poppy wreath to lay on the Cenotaph. He also carried a chest, full of medals.

Each postman had his own patch to cover on foot, and along the route had to empty the letter-boxes and bring the outgoing mail back to the post office. If the in-coming post was late, so the boxes were late being emptied. Outgoing mail was put into strong canvas bags, locked up, then taken to Ayton Railway station on a red hand-cart. It was put on what was known as 'the 7 train' where it went to the GPO in Middlesbrough. The hand-cart brought the incoming mail from the 8 o'clock train in the morning, to be sorted in the post office, which is now Swan's the Jewellers.

The roadmen were known as lengthmen - a jolly team as I recall: **Brassy Johnson**, a well-known character, along with **Bobby King**, **Alf Atkinson** and **Bobby Bulman**. Each had his own patch of the village to keep clean and tidy – familiar sights with barrow, hard brush and shovel. Often a housewife and shopkeeper kept their own patch swept clean but if the Roadmen were around they would say, "Leave that, Missus. I'll get it as I come along."

Dealing with the mail on foot, and being a lengthman, in all weathers, was not easy, but we always got a pleasant smile and a chat from them. The village was greatly indebted to all these stalwart supporters of village life in the days before modern transport and mechanisation, etc, arrived.

Mr W T (Bill) Kirby

Richard **Longstaff**, a mariner, was my great, great, great, great grandfather; he died in Gt Ayton in 1769. His youngest son, William, also a sailor, master of the merchant vessel *Good Intent*, married Elizabeth Edmeston of Ayton Hall, but it was Richard's eldest son, Thomas, a weaver, who was my great, great, great grandfather. He was the father of John Longstaff, Parish Clerk of Great Ayton for 46 years up to the time of his death in 1842. His son Joseph then took over for the next 47 years, until his death by drowning in the River Leven in 1889. During John's period of office All Saints Church had a minstrels' gallery and he conducted the minstrels and the congregation during the service. This is referred to in **Great Ayton and Stokesley by J. Fairfax-Blakeborough**, which is in the reference section of Great Ayton Library. The author of this book quotes an anecdote about John Longstaff which had featured in a **Parish Magazine** – this must, I think, have been pre-1901. **If any are still in existence,**

I would very much like to obtain copies of this book and the magazine

There are also references to the Longstaff family in Dan O'sullivan's excellent book, of which I do have a copy. He mentions Thomas Longstaff (died 1927) as the last link with the Ayton tanning industry: information gleaned from Thomas's obituary. Thomas seems to have left Ayton in search of other employment when the tanning industry ended, and to have been the last member of my large family to live here. I have searched in vain for both his obituary and his grave.

Any information or suggestions regarding my several quests would be most welcome.

Mrs Sybil Edwards

Portland House, 27 Ffordd Y Felin, Trefin, Haverfordwest, Pembrokeshire SA62 5AX.

Tel: **01348 837147**

Email **sybil@edwmcb8.fsnet.co.uk**

One Hundred Years Ago

In the early hours of the day in the autumn of 1906, teams of men and boys set out from Great Ayton to cross the fields now under the Roseberry Estate. They were joined by men from neighbouring areas relaying the tramway linking the North Eastern Railway to the Roseberry Ironstone Mine which was to open the following year. An earlier, wider gauge tramway, following the same alignment, had served the first Roseberry Mine in the 1880s. It seems likely that some of those labouring here one hundred years ago had been involved in laying the original line.

This new tramway, of one and a quarter miles, climbed a total of 350 feet and included an incline with a gradient of 1 : 5. A stationary steam engine at the mine powered the tubs on the main section, but, on reaching the incline, the weight of the full tubs descending pulled up the empty tubs. The line was abandoned in 1924, when the mine closed, and was removed in 1931.

Today, the remains of this tramway and incline are visible from rights of way from Great Ayton to Roseberry Topping.

David Taylor

References:

The Mineral Tramways of Great Ayton. Pepper & Stewart. *Narrow Gauge Railway Society* 1994
Roseberry Ironstone Mine. Richard Pepper. *Published by Peter Tuffs* 1999.

At the beginning of his 2nd full season, our new Conductor, Jeremy Harbottle, continues to grow in confidence, & the choir is acquiring a name for enjoying its rehearsing & performing, & its friendly atmosphere. We welcome new singers to any section – but especially Tenors! We sing a wide range of music - our last concert included *Scarborough Fair*, arranged by Chris Thompson, *Rhythm of Life*, *Teddy Bear's Picnic*, *Gaelic Blessing* by John Rutter, & *In these Delightful Pleasant Groves* by Purcell – I hope that whets your appetite to join us! (Not forgetting the mid-rehearsal tea break & chat!) Please ring me if you'd like to join: **722 897**.

Our **Christmas Concert** will be held in Gt Ayton Methodist Church on **Saturday 9th December**, followed by seasonal refreshments, of course. Our programme will include Vaughan Williams' *Fantasia on Christmas Carols*, with readings, solos and favourite carols.

We will be singing *Music for Easter* on Good Friday, 6th April, & our Summer Soirée & Supper will take place on Saturday 7th July. Please put the dates in your diary, & watch for details later.

Pritiva Attiken Harbottle continues as our expert Accompanist, unfortunately unable to play for the Soirée last July, but making up for it by playing for our 2 extra events in October. Jeremy & Pritiva continue to work together & with us in great harmony!! **Carol Morgan**, Chairman ♪

Ayton Lodge



Two of our members died recently; they will be sadly missed. We donated £25 for each to the Great North Air Ambulance Service (GNAAS) and Butterwick Hospice in their memory. Fortunately our numbers also increased by two though they will not compensate for our loss. Some of our members have undergone surgery recently – heart valve replacement, hip replacement, & our secretary has been fitted with articulated screws after spinal decompression. We expect scintillating footwork in the future, but at present it is one slow step at a time!

A charity started by our Provincial Office a few years ago (see last edition) with a target of £2M wound up in May of this year: we had achieved £2,325,736 for needy boys and girls within Yorkshire North and East Ridings – a very satisfactory result. We also donated £250 to the GNAAS from our Charity Fund. To build up our village charity fund we held a car boot sale, table top sale and barbeque, contributing £208; in addition one of our members led a team in a local golf competition and won: the beneficiary, Teesside Hospice, received £155.

Our Autumn schedule starts in October, commencing with a lecture followed by our annual quiz in November and our Christmas ladies' evening in December. Just into the New Year is our annual trip to London.

Our best wishes to everyone.

A R Corry, on behalf of J Hillyer, Information Officer: 723 138

THIS PAGE HAS BEEN SPONSORED BY THE BRADLEY SCHOOL OF DANCE

The words all relate to the hard but rewarding work of growing things to enjoy seeing - or eating! When you have found all **28 WORDS** in the Square, convoluted, reversed, upside-down, bent, diagonal – sometimes all within 1 word! – re-using letters (but not the same letter twice in the same word!)

9 LETTERS WILL REMAIN UNUSED.

They make **1 WORD**, the name of a popular plant whose blossom lifts the heart after the winter.

TO ENTER: please send **THE 1 WORD** with your **NAME & ADDRESS** to:

THE EDITOR, 22 WHEATLANDS, GT AYTON, TS9 6ED, or via Gt Ayton LIBRARY.

There will be 3 small prizes.

CLOSING DATE: **SAT. 25th November** Results in the Library by **SAT. 2nd Dec.**

ALLOTMENTS GREENHOUSE COLD FRAME WATER FEED DIG WEED
SOW PLANT NURTURE GROW DIVIDE CUT SHEAR PRUNE
FLOWERS BULBS NUTS SEEDS VEGETABLES FOOD FOLIAGE
ANNUALS PERENNIALS SUN BEAUTY FRAGRANCE

A	T	E	R	E	S	R	A	M	P
W	L	O	S	W	U	F	G	E	T
D	G	L	C	Y	O	L	R	O	W
I	S	D	O	S	H	E	A	R	E
V	E	G	R	T	N	E	N	C	E
I	D	E	Y	N	M	U	A	D	S
S	U	T	I	A	G	E	A	L	P
A	B	A	L	O	D	R	N	U	R
E	L	U	E	O	S	C	U	T	A
S	B	I	D	E	F	H	S	F	S

Results of the "Wealth of Personal History" WORDSEARCH, Spring 2006

The answer was **INTRIGUED**

The 3 winners were:

VIV ADDY
Easby Lane

MALCOM GOAT
Langbaugh Close

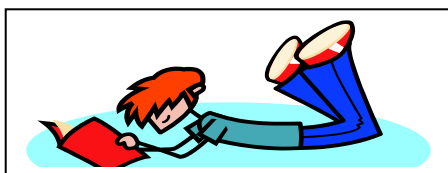
BRIAN NEVENS
Roseberry Drive

Correct entries were also received from:

Mrs E M Armitage, Beech Close; Mrs Lynda Walker, Roseberry Cres; Mary de Wardt, Station Rd
AND: Chris Parkes-Bristow, Lower Earley, Reading (regular visitor);
Margaret Whittle, Tadmarton, Banbury (former resident, & visitor)

Thanks to all who entered – 2 people found the correct missing letters but were mis-led into expecting the word to end withing, leading them to create the word 'eruditing'. Inspired but incorrect – sorry! I have been told that this was the hardest yet – if so, that was not deliberate & I hope that I didn't cause too much frustration – I simply thought that the timing was wrong & many of you must be too involved in Easter holidays! Please enter this time!

Congratulations to all who reached the correct answer, submitted or not!



Great Ayton Library & Information Centre is a great place for children of all ages!

We have board books for babies –
no need to worry about those teethmarks!

We have picture books for toddlers - great to snuggle up with at bedtime!

We have books for children who are just beginning to read and books for confident readers –
all your favourite stories are here!

We have information books to help
with that tricky homework question –
or to use just for the fun of finding out!

We have tons of terrific teenage titles –
try one today!

We have books on tape and CD - to while away those long car journeys!

We have movies on DVD and video – great when friends come to call!

**The Library really IS a great place for children! For further information please contact
Great Ayton Library and Information Centre: 01642 723 268.**

G.A.T.A. - Great Ayton Twinning Association

This summer's visitors from France included members of the **Ouzouer sur Loire** Choir, and one of the highlights of the Bank Holiday weekend was their joint performance with The Angrove Singers in Christ Church. Other events included a visit to the Bowes Museum and Barnard Castle, and a barbeque in the grounds of Roseberry School.

Next summer is the **10th anniversary of the Twinning Association**, and we will be visiting Ouzouer for what promises to be a very enjoyable and memorable trip. We hold social events throughout the year, and planned activities include a wine tasting evening, a pub quiz, and a French bistro-style meal with entertainment. For those who would like to start learning or to improve their French, we hold an informal conversation evening on the first Thursday of every month at the Bridge Guest House.

New members always welcome from Ayton, Stokesley & surrounding villages, especially families.

For further information please contact **Susan Crellen 724388**.

**The Co-operative, High Green, Great Ayton,
for all your grocery needs and much more**

The co-operative

membership



Join us

***Why not become a member
and share in the co-operative group's profits?***

Join us and make your opinion count!

Call in at the store for further details.

CYPRUS TOMB OF THE KINGS PAPHOS

1 bedroom apartment with
spectacular sea views, communal
pool, close to all amenities.
1 twin room with sofa bed sleeps 4.
20 minutes from Airport.
We can arrange Airport transfers at
reasonable rates.

Tel: 01287 633 900 or visit
www.sunsethavenpaphos.co.uk

Stokeld & Stephens Opticians

42 Stokesley Road, Marton
(Above the Gents' Barber)

Open: Tuesday to Saturday

We now hold the patient records
from Miss Valerie Alsop's old
Practice in Great Ayton and will be
contacting everyone soon. Please
contact us if you have any queries.

Middlesbrough 322 386

ANIMAL ANTICS PET BOUTIQUE

PET SHOP

92a The Avenue

Nunthorpe

TS7 0AP

01642

32 70 70

We provide high quality goods

at competitive prices free local delivery

Exotic pets / Furry friends / Birds / Fish

Exclusive designer clothing and accessories

VOUCHERS AND CHRISTMAS CLUB AVAILABLE

BUY ONE GET ONE FREE!

**On all Hot Beverages
throughout November***

Offer applies to customers presenting this voucher at time of purchase from 1st—30th
November 2006

OPENING TIMES

Monday – Friday 9.00am – 4.00pm

Where are We?

TC's is situated within Town Close on North Road, Stokesley
We are in a shared building together with Community Care,
Stokesley Library, The Council Offices and
Town Close Assisted Living for the Elderly
You will find us in the Reception Area— serving home baked items,

TC's Café

Insurance Services you can trust

- Home insurance especially for the over 50s
- Motor insurance with up to 65% no claim discount
- All inclusive motor breakdown cover
- Affordable all-age travel insurance

For more information contact

Age Concern North Yorkshire

AGE
Concern

Northallerton 01609 771624

Harrogate 01423 502253

G40V2DEC04

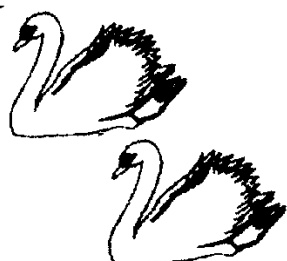
Age Concern Enterprises Ltd is authorised and regulated by the Financial Services Authority. It operates from around 200 local Age Concerns across the UK

Park Rise Ladies Hair Salon

3, Park Rise
Great Ayton

TS9 6ND

Tel: 01642 724676



SWANS

JEWELLERS

V.A.T. REG. No. 259-4811-32



Member of
THE NATIONAL ASSOCIATION
OF GOLDSMITHS

'Where fine jewellery & personal service costs less'

107 High Street, Great Ayton.

01642 725 249

HUTTON SERVICES

MOBILE VEHICLE VALETING

PROFESSIONAL
CARPET & UPHOLSTERY
CLEANING

GARDEN MAINTENANCE

*Quality services so you can have
a quality lifestyle*

01642 722 863 or 07909 577 295

CLIFF ROBINSON DECORATOR 724 503



Friendly efficient service
Good selection of wallpaper books if required
Photos & references from previous work can be seen
Insurance work undertaken: Commercial & private
Taking bookings now

**B & D BRICKCRAFT
BUILDERS
&
BRICK SPECIALISTS**

FREE QUOTES

07944 635 944

or

07707 511 003

Saltburn Bookshop
Secondhand and Antiquarian



OPEN

Tues. to Sat.

Winter hours:

11.00 - 1.00

&

2.00 - 4.00

3 Amber St. Saltburn by Sea

01287 623335



Would you like to appear in
a musical in July 2007?

Are you aged 7-16?

Do you enjoy acting, singing
and dancing?

Then maybe **SBLI Productions** is for
you!

Join us **Thursday 4pm-8pm** in **Stokesley
Town Hall** to find out more.

Enquiries call **07870920235**

Body Bliss

Health & Skin Care Centre

59 High Street

Great Ayton

01642 723 300

refresh, revitalise, rejuvenate



Mobile In-Home Computer Repair Specialist

Mob: 07739 713474 / Tel: 01287 209808

Website: www.homefixcomputers.com

Available Daytime, Evenings & Weekends - Same Price Anytime!

(No Callout Charge - Set Fee Per Job)

**Virus / Spyware Removal • Upgrades • Software Diagnostics • Initial Setup • Internet Problems
System Crashes • Data Recovery • Wireless Networks • New Computer Systems**

Liz MacDonald

BSc. Hons, SRCh, MChs

CHIROPODIST/ PODIATRIST

Home visits – phone
01642 724453

SPANISH HOLIDAY VILLA

Fully equipped, detached private villa in Andalucia, close to National Park. Stunning mountain views, private pool, sleeps 2 – 6, both bedrooms en-suite, air con in main rooms. 25 mins drive to Nerja beaches, 1 hour to Malaga airport.

View <http://mysite.wanadoo-members.co.uk/casaladera>

e mail: casaladera1@yahoo.co.uk

or

Tel 01642 725426

Roseberry Decorating

(Great Ayton)



Prop. Len Trenholme

17 Central Way, Great Ayton,
North Yorkshire. TS9 6AY

Telephone 01642 722 715
Mobile 07766 766 874

GARDENS ROTAVATED
Christmas Greetings to all my customers

BRADLEY SCHOOL OF DANCE

Classes in

TAP – MODERN – BALLET

Ages from 3 years upward



Enquiries 01642 723250

MOTIVE CAR ACCESSORIES

(Formerly CARFARE)

For all your motoring needs.

Parts, accessories, etc.

Mon- Fri: 9am- 6pm Sat: 9am- 5pm Sun: 10am- 4pm

Guisborough

&

Middlesbrough

99 Westgate

Enfield Shopping Centre
(Hunter's Hill)

Unit 1a
Ormesby Rd

01287
610 206

01287
634 935

01642
300 944



**the
alternative
STORE**

*We have a wide and varied
range of products including:*

Organic & 'Free From' foods

Organic Beers & Wines

'Free From' confectionary

Dairy & Non-Dairy Ice-creams

Newspapers, Magazines & Cards

Refill service for Ecover products

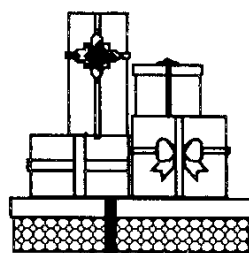
and much, much more.....

**1 High Street, Great Ayton,
TS9 6NH**

**Call Angela or Thomas
on**

01642 724 971

THE PREMIER COLLECTION



**Fancy Goods
Giftware-Handbags
Ladies and
Gentlemen's Clothes**

**113 High Street
Great Ayton
☎ 722823**

JOHN HUNTON EST 1982

PAINTER & DECORATOR

FREE ESTIMATES

4 ROSEBERRY DRIVE, GREAT AYTON

TELEPHONE GREAT AYTON 724213

Jennifer Jayne

**LADIES, GENTS AND CHILDRENS
HAIRSTYLIST**

Telephone:

Great Ayton 722724



Susie D's B & B

**EN SUITE ACCOMMODATION
...OPEN ALL YEAR...**



PHONE : 01642 724351

E-MAIL :

susieD's@crossways26.fsnet.co.uk

CONTACT SUE DRENNAN



**CROSSWAYS
116 NEWTON ROAD
GREAT AYTON
NORTH YORKSHIRE
TS9 6DL**

YOUR LOCAL SOLICITORS

KITCHING.KNEALE & CO.

All legal work covered including:

- Wills, Trusts and Probate
- Conveyancing
- Divorce
- Accidents
- Litigation and Disputes

81 HIGH STREET, GREAT AYTON

Telephone GREAT AYTON 723713

D. F. MOTORS

MOTOR ENGINEERS EST. 1966

*FREE PICK-UP & DELIVERY

*SERVICE & PRE-MOT FOR ALL TYPES OF VEHICLE

*APPROVED AUTODIAGNOS CENTRE

*FORD & PEUGEOT PARTS ALWAYS IN STOCK

*TYRES, BATTERIES, EXHAUSTS, ETC. SUPPLIED

*NEW PRODUCT AVAILABLE

"ULTRASEAL" PUNCTURE PREVENTATIVE

STATION YARD, GREAT AYTON, TS9 6HJ
WORK: 01642 722106 HOME: 01842 722706

A FAMILY BUSINESS THAT CARES

ROSEBERRY CABS Ltd

GREAT AYTON

TAXI & PRIVATE HIRE

- Competitive Rates •
- All Airports Covered •
- Contract Work •
- Friendly Service •
- 8 Passenger Mini Bus •

Director: Paul Hughes

Tel: **01642 723777**

APPLIANCE REPAIRS

Cookers, Washers....
...almost every

electrical appliance
repaired & guaranteed
or 12 months.

7.00AM – 10.00PM 7 DAYS A WEEK

PETER WEST ELECTRICAL
ESTABLISHED 1986

MIDDLESBROUGH 01642 314 527
GUISBOROUGH 01287 610 417
MOBILE 07885 752 215



Seasons

1 Park Square,
Great Ayton

For all the latest trends in
Ladies Fashions and a large
Selection of Accessories
Open

Monday - Saturday

9.00am - 5.00pm

Tel: 01642 723631

Tel. Great Ayton 723380

THOMPSONS HARDWARE

Paints

China

117 HIGH STREET, GREAT AYTON
MIDDLESBROUGH TS9 6BW

Come and see our Christmas Grotto

Gifts for all the family

New range of toys

New toy showroom upstairs

Free delivery in Great Ayton

Join our Christmas Club

KEY CUTTING SERVICE