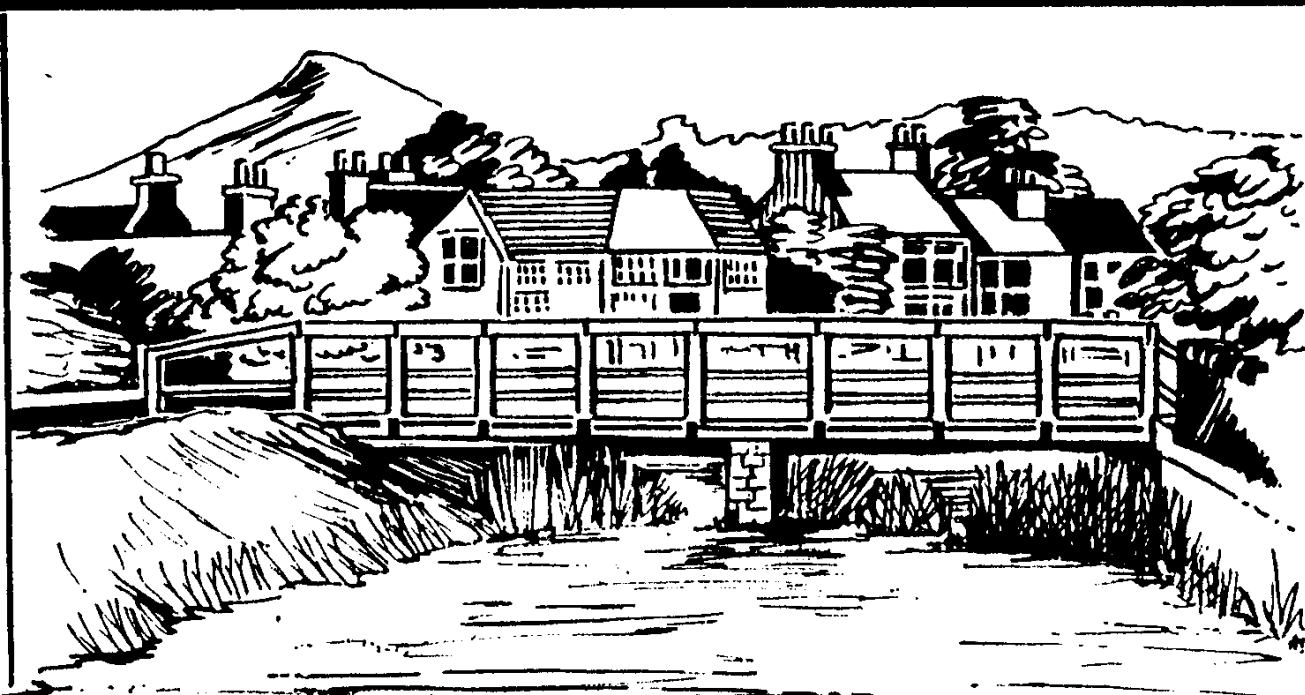


ISSUED BY

The
Community Care Association
in Great Ayton



THE
STREAM

SPRING 2007

COMPUTER SHOP

GREAT AYTON

New Systems.
Repair.
Service
Upgrade
Virus Removal
Printers
Ink - Paper - Discs
Hardware
Broadband install

Need a new P.C.
Custom built P.Cs.
Easy Weekly Payments

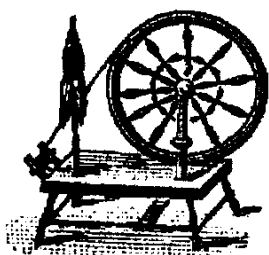
HOME VISITS

P.C. Fixed in your home

53 The High Street. Great Ayton.
Tel: 01642 723433 - 07796 99 22 44

THE SPINNING WHEEL

HIGH QUALITY CLOTHING ALTERATIONS
PROM GOWNS AVAILABLE FROM APRIL
CURTAIN MAKING ALSO AVAILABLE



57 High Street, Great Ayton
Mobile 07876 522325
No calls after 5.00pm, thank you

KILDALE VILLAGE STORE & POST OFFICE

Tel: 722 239

also offers



Bicycle Hire & Maps

Soft Drinks, Ice Cream,
Confectionery

BRIDGE GUEST HOUSE

◆◆◆ Bed & Breakfast
English Tourist Board



OPEN ALL YEAR

5-9 Bridge Street, Gt Ayton, TS9 6NP
01642 725236

JOHN HARRISON INTERIORS

**Hand - made
Furniture**

11 HIGH ST. GREAT AYTON 01642 724 236



YOUR QUALITY
FAMILY RUN FLORIST

Flower Shop of the Year 2006
Silver Award for excellence

PLEASE CALL IN

**FLOWERS & GIFTS
FOR ALL OCCASIONS**

*
**WE DELIVER FREE LOCALLY.
NATIONALLY, & WORLDWIDE**

**EVERYTHING YOU WOULD
EXPECT FROM A FLORIST
AND MORE!**

*
**FIND US THROUGH
THE ARCADE, HIGH ST.
GREAT AYTON TS9 6BW
TEL: 01642 725 333**

*
**WE APPRECIATE YOUR
CUSTOM AND LOYALTY**



Genuine cartridges and paper
available for most brands including...

EPSON **Canon** **brother**
hp **LEXMARK** **BT**

**Direct>>>
Business
Supplies**

tel: 01642
714 715

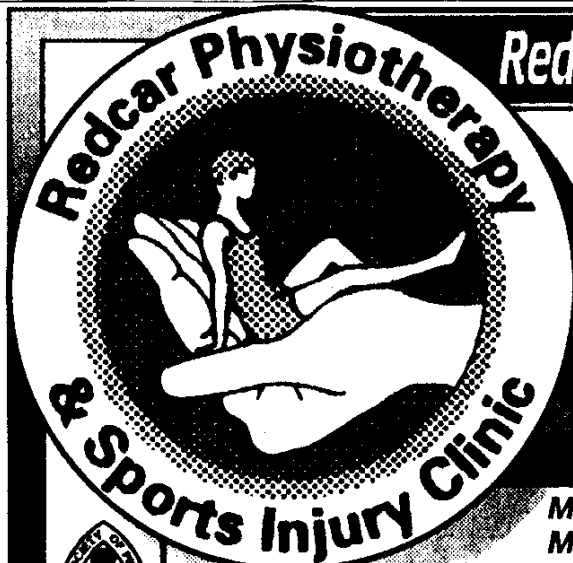
Unit 7, Ellerbeck Way
Terry Dicken Estate, Stokesley

**...angry with
your printer?**

**Get a great deal on new ink,
paper or even a new printer,
just visit your local outlet...**

- ✓ Ink & Toner Cartridges (all makes)
- ✓ A4 Normal & Photo Glossy Papers
- ✓ Computers, CD's & Accessories

**Over 18,000 office
stationery products
all at low, low prices.**



Redcar Physiotherapy & Sports Injury Clinic

- Chartered & state registered physiotherapists
- Qualifications recognised by the medical profession & health insurance companies
- Well equipped clinic
- All muscular & skeletal problems treated
- Sports injuries
- Neck, back & shoulder problems
- Arthritic problems
- Flexible appointments including evenings & weekends

BUPA

FRIENDLY, PROFESSIONAL SERVICE

Mr P. A. Chinn Grad.Dip.Phys, M C S P., S R P
Mrs C. E. Chinn Grad.Dip.Phys, M C S P., S R P

01642 490110 FAX (01642) 476913

14 Park Avenue, Redcar, Cleveland TS10 3JZ



4	The Editor's Space	Carol Morgan
	Thanks to donors, sponsors, volunteers & all supporters!	
5	Beyond the Dream	Mgr Ray Charlton
6	Message from the CCA Chair	David Sills
7,8, 9	CCA FACILITIES & PERSONNEL	Helen Murfin
10	How to fight Malaria in Uganda	Paul Williams & Vicky Holt
12	Thompson's Hardware – 50 years old!	Richard Thompson
13	Work from Roseberry County Primary School	
14	1 st Great Ayton Scout Group	Philip Walker
15	Guiding in Great Ayton	Anita Huntsman, Christine Spink
16	Anyone for Tennis?	Jennifer Roberts
16	10 th Anniversary of the Stokesley Charity Cycle Ride	Mike Newton
17	Are these Jesus' Bones?	Paul Peverell
18	Recipes and Tips	Margaret Whittle!

Pages 19 – 30: THE INFORMATION SECTION (YELLOW PAGES)

19,20,21,22	BUSINESS HOURS IN Gt AYTON + POSTING TIMES	
23	COUNCILLORS, & MP.	HIRING HALLS. B & B LIST
24,25	ORGANISATIONS SERVING Gt AYTON	
26	BUSES (Outline Timetables: 81 (Stokesley-Redcar) & 29 (Stokesley-M'bro') etc.	
27	TRAINS: M'bro'-Whitby (Esk Valley Line) & NYM Steam Railway	
28	RECYCLING UPDATE	
29	DO YOU KNOW....? (Health Centre, HDC, Farmers' Markets, etc)	
30	CHURCH SERVICE TIMES & PERSONNEL.	USEFUL PHONE NUMBERS.
31	Work from Marwood C of E VC Infant School	
32	Gt Ayton Tourist Information	H. A. Stonehouse
32	Gt Ayton Twinning Association	Susan Crellen
32	Captain Cook Schoolroom Museum: Volunteer Attendant Appeal!	
32	Gt Ayton Library & Information Centre	Chris Bower
33	Quakers?	Carole Avison
34	Tempus Fugit! (or Doesn't Time Fly?)	Bob Lappin
36	The Bradley School of Dance	Margaret Connelly
36	Ayton Carers' Support Group	Betty Mattison
37	The Angrove Singers	Carol Morgan
37	Fairtrade in Great Ayton & Stokesley	Barbara Hawkins
38	Gt Ayton Community Archaeology Project	Ian Pearce
39	More Village Characters	Mr W T (Bill) Kirby
40	New Local Neighbourhood Policing Role	PC1491 Michelle McFarlane
41	Ayton Lodge Newsletter	J. Hillyer
41	Yatton House Society	Judy Lindo
42	World Book Day at Marwood Infant School	Marwood School
42	Christian Aid Walk: Sunday 20 th May	Kate Harvie
42	Would YOU like to drive a MINI-BUS?	Helen Murfin
43	So Much to Celebrate!	Revd Catherine Hutton
44	WORDSEARCH COMPETITION. CLOSING DATE: SATURDAY 28TH APRIL	

AS OUR PRINT IS SO SMALL WE PUT A LARGER (A4) VERSION IN THE LIBRARY, CCA CENTRE,

THE DAY CENTRE AND HOLLYGARTH, ALL KINDLY SPONSORED BY MRS DULCIS HINTON.

Please ask for them and tell others who may need them.

4 THE EDITOR'S SPACE: Carol Morgan, 22 Wheatlands, Gt Ayton. 722 897
email : candpmorgan@bun.com

Advertising Manager & Printer: **Marian Button 723 014**

Main Proof-Reader: **Peggy Friend**

Business Hours Researcher: **Liz Greenhalgh**

Final Proof- Reader: **Martin Davies**

Never at a loss, whatever the Stream & I need - my exceptional husband: **Peter Morgan!**

Cover designed & drawn by **Julia Jewitt**

Advertisers, sponsors, contributors, Christ Church (printing), Scout Group (collating), collators & deliverers, Editorial / Production Team – each link in the chain is indispensable & highly valued.

My grateful thanks to all my very hard-working, very supportive collaborators, whatever their sphere of operation – NEARLY 60 VOLUNTEERS!

Again I have used all the tricks I have learned over the years to squeeze in as much as possible. Please persevere!

THANK YOU TO ALL OF THESE SUPPORTERS:

Ayton Masonic Lodge generously donated £100 to support the production of The Stream. After careful consultation I invested in a Laser Printer to improve the readability of every word. Enjoy!

Yatton House has been the collating venue for many years but alterations mean that the rooms are no longer big enough for us so we have moved elsewhere. We have appreciated the help & support there, especially from Manager David Kent, then Judy Lindo, his successor.

Ayton Scout Group Executive Committee has kindly given us permission to collate in the Scout Hut, where space & working tables are plentiful. (It is also right beside where we print!)

Stokesley Parish Church saved the day last Autumn when the Christ Church rotary printer developed a fault. We were able to complete the printing there.

Christ Church has offered to order the paper for us in future, so that it will be delivered upstairs to the printing room (Marian & I are not getting any younger & paper is heavy!) 78,000 pages to go!

St Margaret Clitherow Church has a scoop – the first group to ensure that **every possible page is sponsored** (£2 per page) besides the ones regularly covered. What a splendid idea! We wish Mgr Charlton a long and happy retirement and thank him for all his support over the years.

It was a great sadness to hear of the death of **Eva Garbutt**, always so kind, friendly and cheerful, bustling round the village on her cycle; and of **Susan Land**, a younger friend who, with typical generosity, had started coming from Redcar with husband Barrie to help to collate The Stream. She died suddenly on Christmas Day.

The Stream – the CCA's Gt. Ayton Magazine

3,000 copies: 1 FREE to every house in Ayton, Newton, Easby, Battersby & Batt'by Junction, Kildale & Ingleby Greenhow. Extras go to local Libraries, Churches, Health Centres, etc. in Stokesley, Hutton Rudby & villages visited by the CCA's mini-buses, to publicise CCA facilities.

We print in SPRING and AUTUMN every year.

Why not ADVERTISE with us? £10 for 1 square on any of up to 8 pages. (£12.50 for a square on the Back Cover. - we have a waiting list for those spaces!) I have learned to point out that this is very good value as the "shelf life" of the adverts is **6 months** - until the next Stream is printed!

If you are interested, please contact Marian Button, 723 014. (& £2 will sponsor a page)
Donations are welcome – we no longer cover our costs since we have increased the number of copies, but we don't want to raise charges as we try to offer a service for small & new businesses, and we recognise that some advertisers are mainly, kindly, supporting the CCA. **CM**

THIS PAGE HAS BEEN SPONSORED BY ST MARGARET CLITHEROW CHURCH

The speech we all remember him by was given in Washington on August 28th 1963, to more than 250,000 people, a fifth of them white. Speakers from nearly every segment of society, including labour leader Walter Reuther, clergy, film stars Sidney Poitier and Marlon Brando, and folksinger Joan Baez, each spoke for 15 minutes, but the day belonged to the charismatic young leader of the Southern Christian Leadership Conference: Dr Martin Luther King. These famous words were part of his inspired address, creating the landmark statement of civil rights in America - a dream of all people, all races, colours and backgrounds, sharing in an America of freedom and democracy.

I have a dream that one day this nation will rise up and live out the true meaning of its creed:

"We hold this truth to be self-evident, that all men are created equal."

I have a dream that one day on the red hills of Georgia the sons of former slaves and the sons of former slave owners will be able to sit down together at the table of brotherhood...

I have a dream that my four little children will one day live in a nation where they will not be judged by the colour of their skin but by the content of their character...

He assured the black people of America that he would lead them in their historic struggle out of darkness. But by now his days were numbered. There were many threats on his life. The way ahead was clouded with uncertainty. "But I am not concerned about it now," he said. He would also say, "I just want to do God's will. And He has allowed me to go up to the mountain, And I have looked over and I've seen the Promised Land. So I'm happy tonight." Like the rest of us poor fallen humanity he had his faults, but what is so apparent in his life is his deep faith in the teaching of Jesus, and his love of his fellow man, a deep and unreserved love that knew no bounds, as shown in these words, worthy of St. Paul himself:

"I've seen too much hate to want to hate, myself –

I've seen hate on the faces of too many sheriffs, too many Klansmen,

too many white Citizen Councillors, to want to hate, myself;

and every time I see it, I say to myself, hate is too great a burden to bear.

Somehow we must be able to stand up before our most bitter opponents and say -

"We shall match your capacity for suffering by our capacity to endure suffering.

We will meet your physical force with soul force. Do to us what you will and we will still love you.

We cannot in all conscience obey your unjust laws and abide by unjust systems, because non co-operation with evil is as much moral obligation as is co-operation with good.

And so throw us in jail and we will still love you.

Bomb our homes and threaten our children and difficult as it is, we will still love you.

Send your hooded perpetrators of violence into our communities at the midnight hour

and drag us out on some wayside road and leave us half-dead, as you beat us,

and we will still love you.

Send your propaganda agents around the country

And make it appear that we are not fit, culturally or otherwise, for integration,

but we will still love you.

At 6 pm on the 4th April 1964, as he stood on the balcony of his hotel, he was shot and died.

The awe-inspiring voice of one of the greatest speakers of the century was stilled.



Message from the CCA Chair, David Sills



We are now very fortunate in having 2 new minibuses running, to enable us to transport our clients as & when required. For many years we have offered a service in **Gt Ayton** on Saturday mornings, transporting people from their homes to the shops & back again. Sadly one of our stalwart drivers in this enterprise, David Harbottle, has been ill & unable to drive, so we are having great difficulty in maintaining this service as we have been unable to find other volunteer drivers. If you feel that ***you could volunteer to drive so that we could reinstate this service*** please contact Helen Murfin: **710 085**. Indeed if you can volunteer to drive either the minibus, with suitable training, or your own car at any time we would be pleased to hear from you.

Recently the Pork Butcher in Stokesley closed down, and with it our source of meat cooked for us for the Thursday Luncheon Club. After some hard work by Dorothy Blakey a new supplier of the main course has been found, which will enable us to continue this service. It is only because of our dedicated volunteers that we can continue to maintain all our services.

Behind the scenes there is much to be done to enable us to remain in business. We have had to revisit our PQASSO status (a Quality Assurance system) and much work has been done by John Leeman to enable us to satisfy the requirements for level 2 accreditation. This will ensure that the quality standards of the organisation are continuing to improve. We have put the necessary documentation in place to enable us to receive Volunteer Centre accreditation by Volunteering England. Most of this has been done by Helen who often works beyond the call of duty.

Our core funding comes mainly from North Yorkshire County Council, Hambleton District Council and the PCT but uncertainties, particularly with the heavily in debt PCT, always make the future difficult to forecast. However, we do have excellent staff and a willing band of volunteers which makes me confident that we will be able to respond to whatever changes come our way.

There will be changes shortly in our Executive Committee, when Rev Richard Bradshaw leaves Stokesley for pastures new, and in our Advisory Committee when Mgr Ray Charlton steps down as the Roman Catholic Priest in Stokesley, and Rev Michael Dykes as the Anglican Vicar. If committee work is your forte and you would be willing to volunteer to help us, please get in touch.

We continue to run all our regular activities, as detailed on the following three pages, and they are open to anyone who would be interested in joining one or more of them (or in helping). We can even offer transport to get you to and from the activity! As days lengthen and the sun shine is warmer perhaps you would like the opportunity of a drive in the countryside. We do run such trips and a phone call to the office will enable you to find out what is on offer and participate.

We are the Community Care Association. If you feel that there is any way in which we can offer care to you, then please pick up the phone & let us know. We will be pleased to respond if at all possible.

THIS PAGE HAS BEEN SPONSORED BY ST MARGARET CLITHEROW CHURCH

FACILITIES AVAILABLE THROUGH YOUR COMMUNITY CARE CENTRE 7

For further information, ring the new Centre on 710 085

The new building is now above the new Library, reached by lift or stairs.



Address: (Reg. Charity No: 519662)

COMMUNITY CARE CENTRE, TOWN CLOSE, NORTH ROAD, STOKESLEY, TS9 5DH.

Tel: 710 085 Email: stk-cca@tiscali.co.uk Office Hours: Mon – Fri 9am – 5pm

ChairobicsNOW IN THE TOWN HALL..... Thursdays 10.30 - 11.30

Fun and gentle exercise among friends for those who need encouragement to keep mobile sitting down! £1.

Gentle Exercise Stokesley Methodist Hall, Mondays 10 – 11.30am

Join us each week. Only £2 to keep gently fit! So popular we had to move elsewhere!!

Library Book Delivery Service

In co-operation with Stokesley & Ayton Libraries, chosen books can be delivered to the housebound & disabled. There is now a separate service from Gt Ayton Library, with CCA volunteers. **Ayton Library: 723 268. Stokesley Library: 01609 533 461**

Listening Service Ring the Centre 710 085

Regular cassette tapes of local news & interest for blind & visually impaired, housebound or lonely people.

Mini-Buses: Excursion Club Ring the Centre: 710 085

Opportunities for the elderly to enjoy widening their horizons by joining a range of Excursions from April to December. Book early for these popular outings!

Mini-Buses: Private Hire Ring the Centre: 710 085

The 2 mini-buses may be hired, within the terms of the Licence, for the transport of elderly, disabled & infirm people, for a range of purposes, providing they are appropriate to the CCA.

Mini-Buses: Scheduled Services Ring the Centre: 710 085

The 2 mini-buses run a series of regular local services allowing the elderly, disabled and infirm comfortable mobility into main centres for shopping, to Health Centres and to CCA facilities, etc. Names of those travelling must be given in advance.

Pensioners' Luncheon Club Thursdays 12.00 - 1.00 Ring the Centre: 710 085

NOW AT THE TOWN HALL

An opportunity for people of pensionable age to meet and enjoy a freshly cooked meal in a relaxed and friendly atmosphere. £4. Transport can be arranged.

This is so popular that it has reached capacity & a waiting list is in operation.

Pop-in at the Centre Usually 3 Tuesdays each month: ring 710 085 to check. 2.00 - 3.30

A frequent get-together for people who want friendly company over a cuppa in the attractive, comfortable surroundings of the **NEW** Centre.

THIS PAGE HAS BEEN SPONSORED BY THE HOME FAMILY

Respite Sitting Scheme - Ring 710 085 if you need this help, or wish to offer to be a sitter

Providing trained and sympathetic assistance to relieve a Carer from the responsibility of a sick or disabled relative, temporarily.

Take a BreakIn the Town Hall, Friday afternoons 12 – 3.30pm

Open to the general public for bargain price tea, coffee and biscuits & light refreshments.
(Market day.)

Tea Dances Alternate Thursday afternoons: Stokesley Methodist Hall 1.30 - 4.00

Social exercise and relaxation, as members take to the floor and enjoy each other's company, and sequence dancing, for only £1.50 per person. **Ring the Centre: 710 085**
Sadly the alternate Saturday dance has closed on the retirement of the long-standing Organisers, Lilian & Norman Cuthbert. Many thanks to them for their years of commitment.

The Stream Ayton's Village Magazine. 3,000 copies **Published in Spring and Autumn.**

The Stream carries several pages of CCA information & so is made available throughout the CCA's area of operation, via its mini-buses. See p. 4 for details of delivery & advertising.
Ring Carol Morgan, **722 897**, about copies/articles, & Marian Button, **723 014**, to advertise.

Volunteer Centre **Ring the NEW Centre: 710 085**

Volunteers are needed to undertake a wide range of tasks, such as respite sitting, shopping befriending, pushing wheelchairs, etc., & operating the Luncheon Club, Dances, Pop-ins, etc.
Volunteers are interviewed and references taken up before tasks are allocated.

Volunteer Drivers **To enlist, or if you need this help, ring 710 085**

Drivers use their own car to provide transport to Hospitals, clinics, etc., for those unable to use public transport. Passengers pay a fee to offset the mileage costs re-paid to drivers.

WE STILL NEED CAR DRIVERS! – ESPECIALLY IN AYTON!!

THE MORE WE HAVE, THE LESS EACH IS NEEDED.

FUEL EXPENSES are re-paid to drivers. Your time is what you give. Your help is greatly appreciated by those in need of transport to appointments or to visit loved ones in Hospital. These are not regular commitments. You are not obliged to accept every request made to you – if you are not available we will ask another person on the list – that is why we need a long list of possible drivers!

WOULD YOU LIKE TO DRIVE A MINI-BUS? IF SO, WE NEED YOU!

Through the illness of 2 of our regular drivers, Ayton's popular Saturday morning village shopping trip may have to be suspended!

You don't need a licence - do initial training with our qualified instructors!

No regular commitment needed – just when & as often as it suits you!

IF YOU COULD HELP, EVEN OCCASIONALLY, PLEASE LET US KNOW – 710 085.

OTHER FACILITIES TAKING PLACE AT THE TOWN CLOSE CENTRE 9

Day Centre for the Elderly and Confused **Mondays & Wednesdays 9.30 – 3.30** Caring for those suffering from mental confusion, dementia & Alzheimers Disease, so providing relief & support for Carers. Clients are referred by Social Services, GPs, or the CPN. Qualified & experienced Leaders helped by experienced volunteers provide stimulating activities. For more information ring the Alzheimer's Disease Society: **713 761**.

Support Group for Carers of People with Alzheimer's Disease & other Dementias

This group meets once a month in the Centre. It gives relatives and friends of people with mental health problems the opportunity to get together and discuss all sorts of matters. We all have knowledge of the difficulties of looking after dementia sufferers & are thus able to share our experiences – it's good to talk about things & see the funny side of daily happenings.

Please ring **Jancie Brown: 723 873** or Alzheimer's Branch Office, Thirsk: **01845 525 497**.

The Leven Club..... **Thursdays 2 – 4 pm**

A social club, for people experiencing mental health problems, meets here in Stokesley each week – a friendly, informed group that provides support & a variety of activities.

Ring Marlene Tait on 01609 780 758

Also at the Centre:

Kids Club, Mon–Fri 7.30–9am & 3–6pm (8am–6pm in School Holidays)

Weight Watchers, Tuesdays 9.30 – 11am and Wednesdays 6.30 – 8 pm

China painting, Tuesday mornings.

New Groups meeting at the Centre: Reading groups; French conversation; Scrabble; History.

For details of these groups please contact the CCA office for information: **710 085**.

PLEASE REMEMBER: rooms in the **NEW Centre** may be hired, as before, for functions, etc - various sizes, access by lift / stairs, & with facilities for the disabled, plus a small kitchen.

COMMUNITY CARE ASSOCIATION: STAFF & COMMITTEES

STAFF:

MANAGER: HELEN MURFIN

RECEPTION & CLERICAL:

Mrs Freda Rudland, Mrs Margaret Walkington,
Mrs Ann Maddison, Mrs Elizabeth Robinson

EXECUTIVE COMMITTEE: CHAIRMAN: MR DAVID SILLS

VICE CHAIRMAN : MRS DOROTHY BLAKEY

TREASURER: MR DAVID DALE

SECRETARY: MR DON BROWN

Rev'd Richard Bradshaw, Mr Alan Herd, Mr John Leeman, Mrs Kath Murray,
Mr Stuart Robertson, Mr Steven Smith, Mr Robin Winney.

ADVISORY COMMITTEE:

Mr T Agar, Mr B Bournier, Mgr R Charlton, Rev'd M Dykes, Mrs C Morgan,
Mr J Ramsdale, Mr C Schofield, Mrs C Seymour, Mrs M Skilbeck, Mr A Swales.

MINUTES SECRETARY: Mrs Elizabeth Robinson

THIS PAGE HAS BEEN SPONSORED BY THE LARKIN FAMILY

10 From Paul Williams (& Vicky Holt) in Uganda - How To Fight Malaria

Malaria is the biggest **killer** of patients, the most common **diagnosis** made, & the largest **drug cost** at Bwindi Community Health Centre in South West Uganda.

It causes staff to **lose days of work** due to sickness & to **lose children**, & is the cause of most of our **need for blood** & much of our **laboratory time**.

Prevention is so much better than cure, & the best way that an individual & his or her family can protect themselves against malaria is by sleeping under an insecticide-treated bed net (ITN). It reduces the number of bites that a person gets from a malaria-carrying mosquito by up to 90%, & consequently slashes their risk of malaria.

Most people know this, but very few have insecticide-treated nets. They are not widely available in this area, & our economic analysis has found that they are priced way out of the range of the poorest & most vulnerable. They cost from 12,000 to 15,000 shillings (£3-£4, \$6-8), & most people say that they can only afford to pay up to 3,000 shillings. So, I made it an aspiration to help the people of this area to access ITNs at affordable prices.

The Ugandan Government has struggled to tackle malaria effectively. The Global Fund to fight HIV, TB & Malaria has been suspended here because of evidence of corruption & incompetence at the highest level. There used to be chemicals provided to Health Centres to re-impregnate existing nets, but these are no longer supplied, & the proportion of people who actually have nets in the whole country is thought to be less than 5%. There is a programme of indoor spraying of insecticide that is coming to our district next year, & this is good progress.

After I'd spoken with various people, a friend put me in touch with Jessie Stone from 'Soft Power Health'; she's a doctor from New York who runs a basic primary care service at Bujugali Falls, close to the Nile River. My philosophy of health care is much closer to Jessie's than the pervasive health care culture here. Both of us believe passionately in empowering communities to take control of their own health, investing highly in prevention services, health education before high-tech. investigations, & in doing the basics of primary care well. Jessie took on trust that I could organise a program of malaria education & bed net sales in our parish, & I worked with Vasta & Godfrey, our Community Health Workers, to mobilise communities, inform people through the churches & get Kinkiizi FM, the local radio station, to broadcast what we wanted to do.

On Friday, Saturday & Sunday of last week Vasta, Godfrey, Jessie, her team & myself travelled to three central points within Mukono Parish & held training sessions & sales of subsidised long-lasting insecticide-treated bed nets at 3,000 shillings (80p, \$1.50) each. Crowds of people gathered under trees for shade from the sun, pregnant women brought chickens to exchange for nets, & men argued & bantered – claiming that they, rather than their wives or children, should be the ones to benefit from this good fortune.

At each village we first met the 'LC1' – the local council leader who gave his 'permission' for us to speak on his turf. We set up a hanging mosquito net to attract the attention of passers-by, & then enthusiastically played the church drums to inform the nearby villages that the proceedings

THIS PAGE HAS BEEN SPONSORED BY MARGARETTA HUMPLEBY

were about to begin. We had help from the parish health mobiliser in gathering people together, & the team gave a presentation, aided by our health workers, on the causes of malaria & how to use bed nets. Only people who attended the education sessions were entitled to purchase nets, & there was no question of giving them away. People need to value nets in order to use them, & that demands knowledge & a small sacrifice.

Queues were then formed, men in one line & women in another, & each person was entitled to purchase up to four nets. Seeing the very poorest people enthusiastically line up to spend an affordable amount of money on something that gave them control over a small but important aspect of their lives for the first time, was one of the best moments that I've had in Uganda. If poverty is the lack of choice, then we were giving people a little bit more power, a little bit more control, & the opportunity to protect their children from this dangerous & common disease.

On Saturday afternoon the malaria team did their presentation to the staff in the Health Centre. It was important to offer the staff the chance to buy ITNs. Even though they are (relatively) well paid, they often support large extended families with their wages, & they are much more likely to advocate protection for others if they have adopted the technology themselves. I wanted the staff to see & learn about the importance of prevention, so that they could deliver prevention advice & teaching to our patients with malaria, & as part of the cultural shift in education here that is happening slowly, away from disease & towards health.

After the sale outside the largest church in the area on Sunday, we drove to a village that is one of the most remote in the area. We had realised that most people from Mukongoro had not been to the talk or sale, & we wanted to discover why. We found people far from the main road, in small homesteads scattered among the hillsides. Many of them lived at a subsistence level, without even the 3,000 shillings that we were asking. As we walked around & saw their houses, Jessie commented that even the smallest could accommodate a mosquito net. We talked with local people, & discovered that although they could not pay, they were prepared to barter for a net. We agreed on a 'price' of one bow-&-arrow or 600 mls (1 pint) of honey for one ITN. Next time we come we will host a session in this area. There is a lesson here for everyone involved in health care – the people who do not attend Health Centres are usually the most needy, often the poorest & frequently the most interesting.

Altogether we sold 1,000 ITNs in 3 days, & there was demand for much more. Jessie will come back in January with another 1,000 nets, & we would like to focus on selling to (or bartering with) Batwa Pygmies, following up in some of the villages that we went to this time, to observe usage of the nets, & selling in the neighbouring parish of Kajubwe. Jessie buys at just over \$6,000 (£3,000) for 1,000 nets. All of this is raised from donors. Although she gets some money in return, most of this is used in transport & other costs. If anybody knows someone with a spare £3,000 who would like to invest in this most worthwhile of projects, please let me know & we'll continue selling to the whole sub-county.

Dr Paul Williams (doing 2 years VSO)

Paul.williams2@nhs.net

Bwindi Community Health Centre

www.BCHC.ug4

THIS PAGE HAS BEEN SPONSORED BY SALLY LEWIS

In 1957 Thomas William Thompson (Billy) was made redundant from his job as a cabinet maker at Dixon and Benson's in Middlesbrough. It was then that Billy decided to set up on his own in Great Ayton, renting a workshop in Frankfield Road. Because Billy was extremely good at what he did, work was almost too plentiful. Besides the work that came into the workshop, he would also go out to many of the big houses in the area to work. In fact, his work for the Constantine family took him up to Scotland to their other home in Dunoon.

After a few years he then moved his workshop to Newton Road, in what is now Sam's Bakery. Here he started something that was to change the course of his work completely – he started to sell basic hardware and also china and fancy goods. This side of the business took off so well that in December 1971 he moved to the former Co-op furniture shop in the High Street we all know so well today. Thompson's Hardware.

Ten years later, in 1981, Richard joined the business after 3 years working in a hardware shop in Redcar (Hansells). Sadly, Billy died on 13th November 1997, aged 72 – but many people still refer to the shop as "Billy Thompson's".

Many things have changed over the years in Thompson's, but the one thing that has remained the same is the high level of service that is provided.

Richard Thompson



The Dinner Lady in our School

The Dinner Lady in our school
Is as busy as a bee,
Prettier than a butterfly,
As nice as our tea.

As colourful as a rainbow
As shiny as a star,
As cool as a snowman,
Works as fast as a car.

As magical as a fairy,
As clean as sparkling glass,
As caring as our Mums,
As organised as a bus pass.

As kind as the Lord God,
As tidy as the Queen,
As fun as a little puppy,
As gorgeous as I've ever seen.

by Kayleigh Coates, Yr 3-4

**THIS PAGE HAS BEEN
SPONSORED BY
CATHERINE McKENNA**

My Diary, by Goldilocks by Jessica Jarvis, Year 4.

Dear Diary. Yesterday I accidentally broke into someone's house. I knocked on the door. Nobody answered so I walked in. I was a bit worried. But there was a gorgeous smell coming out of the window.

When I walked in I saw three bowls of ready made porridge. I tried the biggest bowl. It was much too hot (I felt like I was burning). My tummy was tingling. I tried the medium sized bowl. It was much too cold. Then I tried the small bowl and it was just right so I ate it all up.

I felt like a rest so I went into the living room. I saw three chairs (I was a tiny bit scared). I tried the biggest one. It was too hard. Then I tried the medium chair. It was much too bouncy (I nearly bounced off). So then I tried the small chair. It was good, but after about 10 seconds I broke it.

I felt really tired now so I went upstairs. I tried the biggest bed. I shouted "OUCH!!!" That one was harder than the chair so I jumped off straight away. So then I was a bit nervous but still I tried the medium bed. It was bouncier than the medium chair. So after that I tried the small one and it was just right. I dozed off.

The bears came back. They came upstairs and the next thing I knew I was in the bears' belly!

My Diary, by Jack Beanstalk**by Jessica Slater, Year 3-4.**

This is one of the most important days in my life. Mum and me are quite poor. She told me to sell my cow! It's my best friend! I can't believe she said that! I'm really cross with her but she said I have to, or no meals for a week, so I took my cow to Cobble Street. There was this man with a long beard. It reached his toes! I'm surprised he doesn't trip over it! And then he gives me some beans. So I went back home with my beans, so happy, and then Mum shouts and rants at me, yelling about a cow is worth more than beans! So she chucked them out of the window. She sends me to my room. I just stare out of the window. The beans started to grow into a beanstalk! It's huge! I rushed to tell Mum about it. She fainted completely! So I decided to climb it. When I reached the top there was this castle made out of gold! I went into it and everything was made out of gold! Then I see this old giant walk through the room. I dived into the oven. It wasn't on, which was lucky. He sat down on a chair with a harp and a chicken. He yelled "Play" and it actually played without somebody playing! He dozed off so I climbed out and watched the hen - it was laying gold eggs! The harp had a little face. Its eyes were shut. I was delighted! So I picked up the hen and harp. They were really light! Then the harp started screaming. The giant woke up. I dived into the oven. I clasped my hand over its mouth to stop it screaming. The giant yelled "Fe fi fo fum I smell the blood of an Englishman!" It made my blood run cold. I was terrified and burst out of the oven and climbed down the beanstalk with the giant after me. I grabbed the axe from the shed and chopped the beanstalk down. He yelled and fell. It was a horrible sight! I told Mum everything about today but we have the hen and a harp. Each egg is worth £100! We're rich now and we bought my cow back! I'm relieved that I bought those beans now! We have bought this new house with a Jacuzzi. I'm sleeping now. Zzzzzzzzzzzzz!



Scouting in Gt Ayton,

including Beavers (6-8 yrs), Cubs (8-10½yrs), Scouts and Explorer Scouts, is thriving.

We currently have a membership of 116, with meetings being held every weekday evening.

Needless to say, with every success there can be a downside. In order to keep the Group active we have to raise as much money for general funding as possible, by organising a diverse range of events such as the Quiz, Race Night, Cake Stall, Duck Race, Dance and so on. This fundraising takes a lot of organisation by volunteer members in the Group; these include parents, friends, supporters and whoever else is interested. Over the last couple of years the support for our fundraising efforts has been dwindling. I would like to ask anyone who feels they can support us in any way, such as by giving time, helping our fundraisers, buying tickets for our events or even by giving a donation of money or prizes, to contact me or any Group Leader. Whatever you can do would be much appreciated - thank you.

Since 2007 is the Centenary year for world scouting, Britain is hosting The World Scout Jamboree at Hylands Park in Essex in July. This promises to be a fantastic 10 day event with over 40,000 scouts attending, representing 216 countries. Nationally the event will be given a lot of publicity, but on a local level we hope to have a report from a Great Ayton Scout who will be attending the Jamboree.

Our Minibus replacement fund is slowly growing and we are hoping to be able to replace the existing bus later this year.

My thanks again to all Leaders and members of the Executive who devote such a lot of their time to keeping our Group running so successfully. If you think you would like to help or be involved in any way, please make contact.

Philip Walker : 711 503. *Chairman, Group Executive Committee.*

Meetings

Beaver Colony	boys aged 6-8yrs	Fridays.
Cubs Endeavour Pack	boys aged 8-10½	Mondays.
New Scout Group	boys aged 10½ -14	Tuesdays.
Cubs Monument Pack	boys aged 8-10½	Wednesdays.
Scout Troop	boys aged 10½-14	Thursdays.
Explorer Scout Unit	boys aged 14-18	Mondays.

THIS PAGE HAS BEEN SPONSORED BY RAY HUSBAND



continues to flourish, with all units having a very busy Autumn Term.

On July 7th 2007, our Guiding County, North Yorkshire North East, is holding a fun day at Beamish: as a District we have been busy fundraising to pay for the quite substantial transport costs. We held a Prize Bingo in the Workingmen's club in November which raised £448.45 and a Coffee Morning in Stokesley Town Hall in December which raised £257.03. I would like to extend my thanks to everybody who supported us in these ventures, from the parents who donated prizes, to those who attended the Bingo and the Coffee Morning.

3rd Brownies and Rainbows have settled into the new home at the WI Hall, and will shortly be fundraising to pay for their keep. They are however, suffering from a lack of warranted Guiders, having only 2 between the 2 units. We are therefore looking to recruit new Leaders for these units. Would you, or somebody you know, be willing to give up an hour or so each week to help run a Brownie or Rainbow pack? You don't need to have a background in Guiding, as funded training is available; you just need enthusiasm and a desire to work with children. Still not convinced? Rope a likeminded friend into working with you and share the experience - the more the merrier! I hope to hear from you soon.

Anita Huntsman, District Commissioner

.....
My time in Guiding

When my two daughters joined Brownies, I joined a Supporters Committee and began my Guiding experience. The Committee raised a lot of money for equipment and outings.

When my eldest daughter reached 14, I was asked if I would start a Ranger Unit. I agreed to this and had many years doing a lot of different activities, from canoeing to attending a Tramps' Ball! When the Ranger Unit closed, I helped at 3rd Great Ayton Guides for a while before moving to 2nd Great Ayton Guides where I have been for the past 16 years. Over the years, I have been to many Pack Holidays and Guide Camps as QM (Chief cook and bottle washer). In May this year, we are having a large Division camp at Thirsk and this will be my last camp, as I have reached a certain age and must give up my warrant.

Three of the girls who came through my Ranger Unit are now Leaders in the village, so I feel I must have done something right. I have enjoyed my 22 years, and Monday nights will not be the same. We are always looking for new volunteers, so if you are interested, please get in touch and discover what a rewarding and far-reaching organisation Girl Guiding is.

Christine Spink, 2nd Great Ayton Guides

.....
THIS PAGE HAS BEEN SPONSORED BY PAULINE HUSBAND
.....

Great Ayton Tennis Club is a jewel situated at the heart of the village in a charming situation with a membership of around 200. It is a lovely place to come to play tennis or to watch others. There are five courts and an original and unique Clubhouse where members can enjoy healthy exercise and friendly conversation between games. We have teams in the mens, ladies, and mixed Cleveland leagues for those wishing to play competitively.

Our Coach, Ian Allso, runs courses for adults and juniors on Wednesdays and Saturdays and anyone interested should contact him, either by telephone (07814 863 310), or by e-mail ian_allso@onetel.com. Courses start 4th April – early booking is essential as these courses are very popular. Ian is DCA qualified and a fully licensed Coach.

Great Ayton Tennis Club continues to prosper and flourish but always welcomes new members of all ages and abilities. Club evenings are on Tuesdays and Fridays. The Buck Inn is close by for post exercise refreshment. Enquiries about membership should be made to me:

Jennifer Roberts, Secretary: **01642 722 033**.

10th Anniversary of the Stokesley Charity Cycle Ride – Sunday May 13th

The 30-mile Stokesley Charity Cycle Ride started in 1998 when Paul Mackintosh "volunteered" to "do a bike ride" for a 2½ year old girl called Chloe Brown, suffering from a very rare form of cancer. Her grandparents, Des & Hazel Brown, wrote to Paul thanking him for agreeing to organise a charity bike ride. A different charity has been selected for each of the 10 years since & a total of over £63,000 has been raised.

This year, the 10th anniversary, the charity is the Unicorn Centre, which is a member group of the National Charity Riding for the Disabled Association, providing riding therapy & learning opportunities for disabled children & adults in the Tees Valley area. Riding lessons are also available for the able-bodied. The Centre was opened in 1998, funded largely through the Sports Lottery fund. With limited funding from user fees, it relies entirely on fund-raising & donations to subsidise the cost of lessons. The Ride is fortunate to have the full backing of the United Co-operatives, who will be providing car park facilities & refreshments. They are very keen to continue their involvement with the local community by supporting the Stokesley Charity Ride.

The event has its own website www.stokesleycharityride.org.uk where you can enter your name, & has a **YOUTUBE** video to celebrate the last 10 years www.youtube.com/watch?v=Nq--yxjHPPg (or visit www.youtube.com and search on GASBAGSMike). Paul Mackintosh has been the driving force behind this Ride for all 10 years, & has a major event himself this year – he turns 60 the day before the ride! Paul can be contacted on pmckntsh@aol.com or on **0780 114 3942**.

Route: Start: Co-op, Stokesley; Ayton; Ingleby Greenhow; Clay Bank (10 miles); Gt Broughton; Kirby; Carlton; Faceby; *Dog & Gunn*, Potto (20m); Hutton Rudby; Seamer; end: Stokesley Co-op

Last year 222 riders took part – can we beat that this year? *Mike Newton*

THIS PAGE HAS BEEN SPONSORED BY THE BRADLEY SCHOOL OF DANCE

So they have found Jesus' bones at last! James Cameron, the director of the film *Titanic* has disclosed that a stone ossuary (a sort of coffin made of stone) has been discovered in Jerusalem with variants of the names Jesus and Mary scratched on them. "Is this the last resting place of Jesus, Mary Magdalene and their son?" the papers ask? The answer only needs two letters - No - but being good journalists, you never let the truth get in the way of a good story. The names Mary and Jesus were amongst the most common of the day, so hardly the most convincing of proof. Fortunately for Mr Cameron, this great disclosure co-incides with the publication of his latest book. Aha, light dawns at last!

I don't suppose we shall riot in the streets, announce a Fatwa on Mr Cameron, or get much excited about it all. It is fairly common place these days for writers to make fantastic claims in order to fuel sales. What about Dan Brown? He claimed that Jesus married Mary Magdalene and ran away to France to start a bloodline that the Priory of Sion have been protecting to this day up in Scotland. It wasn't all that long ago another writer pinpointed the burial place of Christ to under a hill in France. Of course we English know that he came to these shores as in Blake's poem, *And did those feet...* and is buried somewhere in England.

Running away with Mary Magdalene makes a change, for many years ago another writer claimed that Jesus was gay and that John the Beloved disciple was his lover. But this can't be true, as another book has alleged that the Beloved disciple was Jesus' younger brother!

Does all this show how gullible we are? Rather than believe what the Gospels have said throughout 2,000 years, we would rather put our trust in any fancy idea of the age from someone out to make their fortune. Why do we have such a reluctance to trust the faith of 2,000 years?

I don't know how many millions Dan Brown has made out of the Priory of Sion, or how much James Cameron wants to make out of his book, but it will be lots more than Matthew, Mark, Luke or John made out of theirs! Rather than become millionaires, nearly all the first disciples were killed for their faith. Why would they invent a story that calls us to love, forgive, share and not judge each other? Why have a hero living a simple, selfless life who urges others to follow, even to death? I can't see the hidden motive here, for when the Gospels were written they had no idea how far the faith would spread. Take my advice and stick to the original.

Paul Peverell

THIS PAGE HAS KINDLY BEEN SPONSORED

Margaret & Peter Whittle left the village over 20 years ago, but made a deep impression & are still in touch. (News next time.) Margaret produced a Vegetarian Recipe book before they left.....

Soup: You can make soup out of most vegetables. *Try using the outside leaves of lettuce or cabbage, for instance. Boil them with an onion & a carrot. Add ½ teas. oil & ½ teas. Marmite. Liquidise it all & you have a delicious soup. *Use a chopped up potato, including the skin, & it will act as a thickener when liquidised. *Put leftovers with vegetable water & liquidise. *Freeze it if you are not going to use it straight away. * A sprinkling of grated cheese gives soup a tang.

Salad: *Experiment: serve peppers & mushrooms, sliced; chopped lettuce with raisins; watercress with tomato & a sprinkle of basil; beetroot & apple, both diced; cauliflower florets with chives; parsnip grated with cheese. * add herbs & a few drops of oil or lemon, or a yogurt-based dressing: mix 1 tablesp. natural yogurt + 1 teas. cooking oil + 1 teas. cider vinegar.

* Try to eat salad daily – at lunchtime, rather than evening, since it takes 6/8 hours to digest.

Vegetable Crumble - to serve 4 to 6. * The longer this crumble stays in the oven, the crunchier it becomes. It stays moist below the surface if the temperature is kept low.

* You can use any vegetables you happen to have instead of the ones suggested.

Ingredients

1 tin (medium) baked beans
¼ teas. curry powder
1oz/28g raisins

suggested
vegetables, etc:

1 medium tin tomatoes
1oz/28g dried onion
¼ teas. Marmite

Method

Mix together & spread along the bottom of an oven-proof dish.

2 large carrots	-	grate coarsely over the beans
¼ teas. mixed herbs	-	sprinkle over carrots
4oz/113g frozen peas	-	spread over carrots (un-thawed)
¼ teas. mint	-	sprinkle over peas
1 large parsnip	-	grate coarsely over peas
¼ teas. basil	-	sprinkle over parsnip

Empty tomatoes into a saucepan, add onions & Marmite; simmer briefly, cutting tomatoes roughly. Spread over bean & raisin mixture.

Crunch Topping

6oz/170g wholemeal flour
3oz/85g margarine
6oz/170g grated cheese

Rub margarine into flour until it resembles fine breadcrumbs.
Add to flour & margarine and mix in.
Sprinkle on top of the vegetables.

Bake: middle shelf, 260° F/140° C/Gas 1 for at least 2 hours.

Lemon Surprise

Ingredients: 1 small tin evaporated milk; 1 egg; 1 lemon; ¼ cup of brown sugar

Method:

1. Chill milk in fridge, then whip it until it is stiff. Squeeze lemon juice into milk & whip again.
2. Beat egg & sugar together until stiff. Fold grated lemon rind into milk & add to egg mixture.
3. Spoon into refrigerator tray. Put into freezer – will set in 2 hours or so.

Quaker Cake

Method:

1. In a saucepan, slowly melt together: 8oz/227g margarine; 8oz/227g brown sugar; 1 tablesp. golden syrup; 1 tablesp. black treacle
2. When completely melted stir in: 2oz/57g Quaker oats + 3oz/85g wholemeal flour. Mix very well.
3. Pour into a large roasting tin (e.g. 14"/35cm square), well greased with margarine.
4. Cook on middle shelf at 300° F/150° C/Gas 2, for 15-20 minutes until golden brown.
5. Allow to cool slightly, then cut into squares & ease out of tin.

* **Warning:** Do not leave in tin until cold – it will stick to the tin!



BUSINESS HOURS OF SHOPS & AMENITIES IN GREAT AYTON

(Times correct when going to print; alterations may occur occasionally)

Shop/Amenity	Weekdays, excluding lunch	Saturday	Sunday	Lunch
1. Bakeries				
Lynne's Bakery	8.00am - 4.30pm	8.00am - 4.30pm	-	Open
Sam's HomeBake	8.00am - 4.30pm Shut Mon.	8.00am - 1.00pm	-	Open
2. Butchers				
Petch's	9.00am - 5.00pm Shut Mon. 9.00am - 4.30pm Wednesday	9.00am - 4.00pm	-	Open
StokesleyButchers	9.00am - 5.00pm (Open Mon)	9.00am - 3.30pm	-	Open
3. Fish	<u>Mobile fishmongers:</u>			
Peter Calden	8.30am - 2.00pm Monday	(01723) 515 492		
S Green, Park Sq	10am -12.15pm Thursday	(01947) 600 737	(Park Square)	
4. General. Note:	<u>Alcohol may only be sold:</u>	<u>8am-11pm Mon -</u>	<u>Sat +10am-10.30</u>	<u>pm Sun.</u>
Bells	6.00am -11.00pm	6.00am- 11.00pm	6.00am -11.00pm	Open
Co-op Store	7.00am -10.00pm	7.00am- 10.00pm	7.00am -10.00pm	Open
Suggitts Ices	9.00am - 7.00pm (Café 5.15)	9.00am - 7.00pm (Café - 5.15)	9.45am - 7.00pm (Café - 5.15pm)	Open
Teasdale's (Off-licence)	8.00am - 5.30pm	9.00am - 5.30pm	10.00am -2.00pm	Open
The Alternative Store	7.00am - 6.00pm	7.00am - 6.00pm	7.30am - 6.00pm	Open
Worthy Pearson News+ Post Office	7.00am - 6.00pm 9am - 5.30pm - 5pm Wed.	7.00am - 7.00pm 9.00am -12.30pm	8.00am - 1.00pm Closed	Open Open
5. Greengrocers	Closed.			
6. Hot Food				
Gullivers Fish n Chips All day, Bank Hols	11.30am -1.30pm & 4.15pm - 9.00pm	11.30am- 2.00pm	-	Open
Pizzeria	5.00pm -11.00pm Mon-Thurs 5.00pm - 12.30am Friday	5.00pm -12.30am Tel: 722 227	5.00pm- 11.00pm	-
7. Personal				
Head's (Men's hair)	8.00am - 6.00pm Shut Mon. 8.00am - 7.00pm Fri. (later by	8.00am - 5.00pm appointment, tel:	724 540)	Open
Jennifer Jayne (All hair)	9.00am - 5.00pm Shut Mon. 9.00am - 7.00pm Friday	Closed	-	Open
Park Rise Ladies Hair Salon	9am Wed - Fri. Shut Mon+Tu. open - 3 Wed; - 4 Th+Fri	9.00am - 1.00pm	-	Open
Walker's Hair	9 - 7 Tues+Thurs. Shut Mon 9am- 5.30pm Wed + Fri	8.00am - 1.00pm	-	Open
Watkins Wright (All hair)(Arcade)	9.00am- 5 Tu,Wed. Shut Mon - 8pm Thurs & - 5.30pm Fri	8.00am - 3.00pm	-	Open
Body Bliss & our Tanning Lounge	Mon-Wed 9am - 5pm Thu & Fri 9am - 8pm Opening soon. 10am - 7pm	9am - 4pm 10am - 7pm	(Will be in TheArcade)	Open Open
Tamoka Tattoo Studio, Arthur St.	Open by appointment. Tel: 07779 284 756			

ALL 12 OF OUR "YELLOW PAGES" HAVE GENEROUSLY BEEN SPONSORED

Shop/Amenity	Weekdays,excluding lunch	Saturday	Sunday	Lunch
8. <u>Clothes, etc</u>				
Ayton Saddlery	10 - 6 Thur+Fri.Shut M,Tu,W	10am – 6.00pm	-	Open
PremierCollection	9.00am - 5.00pm -ish	9.00am - 5.00pm	-	Open
Seasons	9.00am - 5.00pm	9.00am – 5.00pm	-	Open
Spinning Wheel	9.30am – 4.30pm. Shut Mon + Wed	9.30am - 1.00pm	-	Open
9. <u>Services:</u> <u>Health</u>				
Chemist	9.00am - 6.00pm	9.00am - 5.00pm	-	Open + Pharmacy
Dentist	9.00am – 5.00pm	-	-	-
Undertaker - now H W Carter	Tel: 700208 (24 Hours) Office 9.00 – 5.00pm - as	before, for now.		
Health Centre	8.30am - 6.00pm <u>Written</u> repeat prescription	(See Page 29 requests only.	<u>for Tel. Numbers)</u>	12.30 – 1.30
10. <u>Services:</u> <u>Legal / Financial</u>				
Hill&Co Insurance	9.00am - 5.00pm	-	3 Guisboro' Rd	Open
Kitching & Kneale (Solicitors)	9.00am - 5.00pm Other times by appointment:	Tel: 723 713	-	Open
Nat West Bank	9.30am -1.30pm(10am Wed)	-	-	
Post Office at Worthy Pearson	9.00am - 5.30pm – 5pm Wed.	9.00am -12.30pm	-	Open
11. <u>Home and Garden</u>				
Acuframe	By appointment: 722 411	(Picture Framing)		
Bloomarie (Arcade) Florist	9.30am - 4.30pm – 5pm Fri.	9.00am - 5.00pm	-	Open
CaptCookSchool- Room Antiques	2pm-4.30pm Shut Mon+Thur Tel: 723 581	2.00pm - 4.30pm	-	
J. Harrison, Furniture&Interior	Flexible hours 724 236 even'gs / weekends		-	Open
Park Sq Collectables	10am – 4.00pm	10am – 4.00pm	-	
Sally Anne Interiors,ParkRise	Closed Tel (01642) 725 000 & →	12 - 3.00pm 07879 658 108	-	Open
Thompson's Hardware	9.00am - 5.30pm	9.00am - 5.00pm	-	Open
Traditions	9.00am - 5.00pm	9.00am - 5.00pm	-	12.00 - 1.30

Shop/Amenity	Weekdays, excluding lunch	Saturday	Sunday	Lunch
12. <u>Garages,</u>	<u>Cars, Bikes</u>			
Bike Traks	9.30am - 5.45pm Shut Wed. Open – 7pm Thurs.	9.30am - 5.30pm	-	Open
DFMotors Station)	8.00am - 6.00pm	8.00am - 12 noon	-	Open
Frankfield (Pye)	9.00am - 6.00pm	9.30am - 5.00pm	-	Open
Imperial(W Eves)	7.30am - 9.00pm	8.00am - 9.00pm	9.00am - 8.00pm	Open
KildaleStore+P.O .Bicycle Hire	9.30am – 5.00pm Shut Wed. Tel: 722239	9.30am – 5.00pm	9.30am - 5.00pm	1pm-2.30
13. <u>Gifts</u>				
Bloomarie (Arcade)	9.30am - 4.30pm. – 5pm Fri.	9.00am - 5.00pm	-	Open
Cooper's Gifts	Shut Mon. 10 - 4.30 Tue - Fri	10.00am- 4.00pm	-	Open
Edition of You,Photog	Shut Mon. 9 – 5 Tue - Fri	9.00am – 5.00pm	-	Open
Premier Collection	9.00am - 5.00 (ish)	9.00am – 5.00pm	-	Open
Swan's Jewellers & Gift Shop	9.30am – 5.00pm	9.30am – 5.00pm	-	Open
14. <u>Leisure and</u>	<u>Learning</u>			
All Saints Church	April - Oct: 2 - 4.30 daily + 10.30 – 12.30 Tuesdays	Tel. 722 173 (see column left)	(see column left)	
Ayton Computers	12 – 5.30pm Mon 9.30 – 5.30pm Tues – Fri	9.30 – 4.00pm	-	Open
Ayton Saddlery	10 - 6 Thur+Fri. Shut M,Tu,W	10.00 – 6.00pm	-	Open
Book Emporium Bookshop	Shut Mon + Tues. 1 – 4pm Wed, Thur, Fri	10.00am- 4.00pm (Lunch 12 – 1)	Seasonal	Open
Cook Museum	1 April – 31 Oct: 1 – 4 daily July - Aug. 11am – 4pm	(see column left)	(see column left)	
Hook, Line & Sinker	10am – 5pm. Shut Mondays	9.00am – 5.00pm	-	12.00 - 1.30
Library	Closed Monday 9.30am - 5.00pm Tuesday 2.00pm – 5.00pm Wed & Fri. 9.30am – 7.00pm Thursday	9.30am -12.30pm	-	12.30 - 2.00
@ venue for conferences &....	9.00am – 5.00pm 16 High St	Tel: 724 454	-	Open
Tourist Inf. Point	April – Oct, hopefully! (When open:10am - 4pm)	<u>Tel 722 835</u> (10am - 4pm)	<u>Fax 724 960</u> (1pm - 4pm)	
Conservative & Unionist Club	12 noon – 11.00pm All times given, members only. Bar normal licensing hrs	11.00am-11pm	12 noon - 3.00pm	Open
Working Men's Club	1 pm - 11pm Mon -Thur & 11.30am – 11.00pm Friday	11.30am - 11pm	12 noon-11pm	Open

Shop/ Amenity	Weekdays	Saturday	Sunday
15. "Eating Houses"			
Joplins (High St)	7.00pm till late, Tues - Friday Shut Monday	7.00pm till late	
Park Square Coffee Shop	Mon + Tues closed. 10am – 4pm Wed - Fri	10.30am – 4.00pm	10.30am – 4.00pm
Tally's (Station Road)	10.00am - 4.00pm M, Tu, Fri Shut Wednesday & Thursday	10.00am – 4.00pm	12 noon – 4.00pm
The Cook's Room (High St.)	Mon + Tues closed. Wed: 6.30 – 9.30pm. Thu+ Fri: 12 - 2 + 6.30 - 9.30	6.30pm – 9.30pm	12 noon – 2.30pm
Whinstone View Bistro (Caravan Park)	11am – 11pm Tues. – Fri. Food: 12 - 9pm. - 9.30pm Fri Shut Mon	11.00am – 11.00pm Food 12 – 9.30pm	12 noon – 11.00pm Food 12 – 9.00pm
16. Hotels, etc			
Buck Hotel	11.30am – 11.00pm Food Tues-Fri 11.30 - 2.30 & 5.30 - 9pm.	11.30am – 11.45pm Food: the same times	11.30am – 10.30pm Food: 11.30 - 3.30
Royal Oak Hotel Restaurant open 7.15pm – 9.30pm	11.00am – 11.00pm Food available 10.00am to 9.30pm except 2.00 -3.00pm	11.0am – 11.00pm Food 10.0am - 9.30pm except 2.00 - 3.00pm.	12 noon – 11pm Food 12 - 9.30pm except 2-3 + 6 - 6.30
17. Taxis:	Remember the 3 Ayton taxi Roseberry Cabs 723 777	services to solve the Eclipse Taxis 723 699	Drink/Drive problem Ayton Taxis 722 448
18 Public Conveniences			
Park Rise	7.00am - 9.30pm in Summer 7.00am - 7.00pm in Winter	As weekdays	As weekdays

COLLECTIONS FROM LETTERBOXES IN & AROUND AYTON

	<u>Mon – Fri.</u>	<u>Saturdays</u>
1. Box at Ayton Post Office	5.30pm	11.45am
2. Newton Road (in wall opposite Tiledsheds)	5.30pm	9.30am
3. Linden Ave/Capt Cook's Way/Linden Grove Corner	5.30pm	9.00am
4. Stone Bridge End (Low Green)	5.30pm	9.00am
5. Station Road/Little Ayton Lane junction	5.30pm	9.00am
6. Gt Ayton Railway Station (Bridge end)	5.30pm	10.00am
7. Gribdale	5.30pm	9.15am
8. Little Ayton	5.00pm	9.30am
9. Easby	5.00pm	9.30am
10. Newton under Roseberry	5.30pm	9.00am
<u>Last collection at:</u>		
Stokesley Post Office	6.00pm	12.30pm
Guisborough Post Office	5.45pm	12.30pm
Middlesbrough (Grange Road)	6.30pm	12.30pm

Notice

I understand that only these final collection times are now guaranteed, but there may also be collections at other times when possible. Ed.

Sunday Collections:

- Box at **Great Ayton** Post Office 1.00pm
- Box at **Stokesley** Post Office 12 noon
- Box at **Guisborough** Post Office 1.00pm
- Box at **Middlesbrough** (Grange Rd) 2.00pm

Ring **08457 740 740** for further information .

Please forgive any mistakes in this Section – but do tell me about them!

CONTACT YOUR LOCAL COUNCILLORS, MP, etc

Parish Councillors ELECTIONS TO BE HELD IN MAY - CHANGES INEVITABLE

Mr Peter Bell 43 Addison Road **722 767**
 Mr John Fletcher Orchard House, 10 High Green **723 549**
 Mrs Frances Greenwell 51 Newton Road **722 966**
 Mrs June Imeson, OBE 12 Leven Court **722 175**
 Mr Ron Kirk (Chair.) 2 Rosehill **722 053**
 Mrs Margaret Stevens 34 Langbaugh Close **723 334**
 Mr Neal Waters Apple Tree Cottage, Lt Ayton **724 000**

Clerk to the Council: Mrs Louise Holden, 42a Marwood Drive, TS9 6PE **722 292**
email: clerk@greatayton.fsbusiness.co.uk

District Councillors: Hambleton Offices: 0845 1211 555

Mrs June Imeson, OBE cllr.june.imeson@hambleton.gov.uk
 Mrs Frances Greenwell cllr.frances.greenwell@hambleton.gov.uk
 Mr John Fletcher cllr.John.Fletcher@hambleton.gov.uk

County Councillor: Mr John Fletcher

cllr.j.fletcher-nycc@btinternet.com

NYCC Offices: (01609) 780 780

Member of Parliament: Rt. Hon. William Hague, MP

House of Commons, London, SW1A 0AA

Local Office: 67 High St, Northallerton, DL7 8EG. **(01609)772 060**

Local MEPs: Yorkshire & Humber Region: 6 MEPs. See Spring 2006, p. 46 (Library)

HOW TO HIRE HALLS IN & AROUND GREAT AYTON

FRIENDS MEETING HOUSE (High Green) Carole Avison **710 736**
 METHODIST YOUTH HALL Ray Hopper **722 044**
 PAROCHIAL HALL (Guis. Rd) Mon, Thu, Fri morn: OFFICE **722 665**
 ROSEBERRY SCHOOL HALL / CLASSROOMS OFFICE **722 883**
 VILLAGE HALL (High Street) Mrs T Thompson **722 068**
 W.I. HALL (Newton Rd) Mrs Duffey **723 641**
 YATTON HOUSE (Guisborough Road) OFFICE **722 380**
 VILLAGE HALL, KILDALE Mrs Jane Mitchell **724 198**
CCA - rooms in Town Close Centre, **STOKESLEY** OFFICE **710 085**
 PURSGLOVE CENTRE, **GUISBOROUGH** OFFICE **01287610 234**

ACCOMMODATION IN GREAT AYTON

A local Accommodation Guide is available from the Tourist Information Point in Summer (a list is displayed in Winter) giving more detail and covering a wider area.

B&B Name Address Contact

Sue Drennan Crossways, 116 Newton Road **724 351**
 L Johnson & M Denny Traveller's Rest, 97 High Street. **724 523**
 Mr & Mrs Lavender Mill Farm, Stokesley Rd (Non-smoking) **723 939**
 Rita Spenceley Bridge Guest House, 5-9 Bridge Street **725 236**

Self-Catering

Holiday Cottage, Mrs A Gregory Stable Cottage, Overbrook, Gt Ayton **724 226**
 Holiday Cottage, Mrs Larkin Cleve Cottage (Sleeps 6) **724 426**

Please contact the Editor ([722 897](tel:722897)) if you would like to be added to this list.

LIST OF ORGANISATIONS SERVING GREAT AYTON

There is a comprehensive file at the LIBRARY covering a much wider area.

TO KEEP THAT FILE & THIS LIST CORRECT, PLEASE TELL US OF ANY CHANGES!

Please let me know if you would like your email address here INSTEAD of your postal one.

Adult Education

Continuing Education	Mrs Sue Newman, Stokesley	718 518
W.E.A. classes	Marian Button	723 014
All Saints	Roger Arkell	43 Byemoor Avenue 722 173
Alzheimers Support Group	Mrs Jancie Brown	723 873
Amnesty International	Irene Macdonald	15 Farm Garth 722 262
Angrove Singers	Mrs Carol Morgan	22 Wheatlands 722 897
Ayton Angling Association	Mr Geoff Stephenson	31 Wheatlands 723 501
Ayton Allotment Assoc.	Bill Arnold	76 Roseberry Cres. 723 557
B adger Protection Group	Mr Wood	711 336
Badminton (Ladies only)	Mrs Doreen Tate	40 Guisborough Rd 722 491
Badminton Club	Sue Young	722 349
Bereavement Care	Northallerton & District	(01609) 748 100
Bowls Club	Mr Mike Myers (Treasurer & Enrolment)	722 637
Bridge Club (Ayton)	Margaret Lunn	723 671
Bridge Club (Stokesley)	Mr J Borwell	73 Meadowfield 711 219
British Red Cross	Mrs Jancie Brown	723 873
C ancer Research (Yorks)	Mrs J Groves	67 Wheatlands 722 598
Carers' Support Group	Community Care Centre, Town Close, Stokesley	710 085
Chess	Mr P Archer	Stokesley Club (01609) 882 420
Childline (Fundraising)	Mrs Shuttleworth	Marwood Drive 725 321
Children's Society	Mrs Marina Charlton	1 Addison Road 723 087
Christian Aid	Kate Harvie	71 Roseberry Cres. 722 279
Churches Together in Ayton	Robert Lappin	11 Wainstones Close 722 624
Citizens' Advice Bureau	Northallerton	(01609) 770 309
Community Care Assoc. Commun. Care Centre, Town Close, Stokesley (over Library)		710 085
Conservative Assoc.	Mr R Kirk	2 Rosehill 722 053
CrashBangWallopTheatre Co.	Danny Greenhalgh	92 Newton Road 722 192
Crusaders	K & S Underwood	15 Roseberry Drive 723 727
CRUSE (Bereavement)	Unit 7, Bow St, Guis	Mon 10 -12, Thu 2 - 4 (01287) 610 734

Dancing

Bradley School of Dance	Ms M Connolly	723 250
Old Tyme Dancing Circle	? (WI Hall, Monday evenings)	
Scottish Country Dance	Jo Chapman	805 443
Thompson School of Ballet	Thelma Thompson	55 Marwood Drive 722 068
Day Centre (Tues + Fri)	Dot Ellerby	Addison Rd 724 175
Day Centre for Elderly/Confused, Community Care Centre, Town Close, Stokesley		710 085
Diabetes UK, (S. Cleveland Branch) Derek Waterworth		(01287) 635 053
Dramatic Society	Pauline Turner	62 Roseberry Cres. 722 096
Drop-In at Hollygarth	Mrs M Randall	724 709
F airtrade, Ayton & Stokesley Group	Mrs Barbara Hawkins	blmhawkins@btinternet.com 723 160
Flower Club	Mrs Val Oseland	27 Byemoor Avenue 722 332
Football & Cricket Club		
Football	Mr K Wilcox	1 Osprey Close, Guis. (01287) 635 758
Cricket	Mr N Thurlow	136 Roseberry Cres. 722 037
Freemasons, Ayton Lodge	Mr J Hillyer	723 138
G .A.S.B.A.G.S.	Mike Newton	mike@newton948.freeseve.co.uk 722 184
Guides, Brownies & Rainbows	Anita Huntsman	District Commissioner 710 909
Guide Dogs	<u>New local contact needed!</u>	Regional Office 231 666

H istory: Community Projects	Dan O'Sullivan		723 358 25
I nners Wheel (Guis. + Ayton)	Margaret Topping	33 Langbaurch Close	723 080
J udo Club	Mr Alan Heron		294 840
L abour Party	Mrs B Hawkins	blmhawkins@btinternet.com	723 160
Ladies Circle	Mrs G Robson		595 823
Leven Art Society	Mrs S Heggs	The Mill, Great Ayton	722 864
Leven Club	Mrs Lucy Waring		712 365
Liberal Democrats	Mr Richard Short	102 Guisborough Rd.	723 236
Lip-Reading Classes	Mrs C Hayes	3 Bracken Cres. Guis.(01287)	634 517
Listening Service Tapes	Community Care Centre, Town Close, Stokesley		710 085
M ethodist 8 o'clock Group	Mrs M Whayman	19 Greenacre Close	722 700
Mothers' Union	Mrs K Stewart	40 Marwood Drive	
Multiple Sclerosis	Mrs Wendy Heald	15 Marwood Dv	722 635
N ational Council of Women	Mrs M de Wardt	Hunter's Lodge	722 409
Neighbourhood Watch Co-ord.	Mrs H Sillars	Dikes Lane	722 233
Newspapers: D&S Times	Robert Lappin,	11 WainstonesClose TS9 6LB	722 624
NSPCC	Mrs B Taylor	43 Skottowe Cres.	723 170
NY Moors Assoc.	Mr G Belbin	Angulon House, Faceby	700 535
O pen Doors	Secretary	17 High Green	
Over 60's Club	Mr J Greathead		722 072
P igeons: Homing Society	Mr Booty	29 Linden Grove	723 004
<u>Playschools:</u>	1. Mrs S Stephenson & Miss J Scott	W.I.Hall	724841/722 576
	2. Mrs J Robinson	St. Margaret's Hall	722 868
	3. L. Sturdy: Scallywags	Roseberry School	724 307
	4. Mrs M Hopper	Methodist Hall	722 044
R elate (Relationship Guidance)		0800 980 5907 or M'bro'	882 822
Riding for the Disabled	The Unicorn Centre		576 222
Roseberry Kids Club	Julie / Sandra		723 728 / 710 996
Rotary Club (Guis. + Gt Ayton)	Mr D P Sheldon	11 Stainsdale, Guis. (01287)	638 937
RSPCA	Great Ayton Animal Centre, Yarm Lane		724 016
S ave the Children Fund	Mrs Pamela Baker	7 High St, Gt. Broughton	711 066
Scouts, Cubs & Beavers	Mr Philip Walker	Kirby School Farm, Lt Broughton	711 503
Settlement Furniture Services			463 862
Social Democratic Party	Mr David Conroy	33 Roseberry Ave.	722 507
St John Ambulance	Miss Sharon Coles	Activities at Coulby Newham	280 910
T ennis Club	Mrs J Roberts	17 High St	722 033
Traidcraft	K & J Harvie	71 Roseberry Cres	722 279
Trefoil Guild	Mrs Betty Breckon		724 228
Twinning Association	Pete Samson		725 267
U nited Nations Association	Mr R Stainsby (Chair.)	1 Linden Road	722 589
V ictim Support Group	Nick Firth & Mike Minter,	Newby Wiske Hall (01609)	777 771
Volunteer Centre	Community Care Assoc'n, Town Close,		
Stokesley	710 085		
W ednesday Forum	Mrs M Mawston	22 Linden Road	722 160
Wildlife Assoc. (Ayton)	Mr Alan Bunn	60 Roseberry Cres.	724 955
Wildlife Rescue	Mr Ken Bibby	Redcar	482 132
Women's Institute	Mrs Betty Breckon		724 228
Women Together	? (Mrs Counter died)		
WRVS (Meals on Wheels)	Elaine Whitehead	Day Centre, Addison Rd	724 175
Y atton House Society	Judy Lindo, Manager	Y.H., Guisborough Road	722 380
Yoga	Jenny Earle		722 487

(Please forgive any errors – but **PLEASE TELL ME ABOUT THEM!**)

26 BUSES Traveline: 0870 608 2 608 (7am- 9 pm) Local: 672 240 From January 2007

There are extra buses giving a half-hourly service between Guis. & Redcar + Sundays & B. Hols.

81 (781*) between STOKESLEY, AYTON, GUISBOROUGH, REDCAR, MARSKE

Route: Stokesley High St; Gt Ayton High Green; Newton; The Voyager, Hutton Gate; Guisbo'; Dunsdale War Memorial; Yearby; Kirkleatham Village; Redcar Clock; Bus Station; + Marske Roundabout; Cemetery.

MONDAY- SATURDAY STOKESLEY- REDCAR/MARSKE (Hourly)

Stokesley High St. Hourly from 7.46am (Sat. 9.46) to 6.46pm

Ayton	Hourly from	7.58am	to	6.58pm
Guisborough	Hourly from	8.19am	to	7.19pm
Redcar Bus Stn	Hourly from	8.45am	to	7.45pm
Marske Cemetery	Hourly from	8.56am	to	only 5.56pm

These timetables are outlines of regular times e.g. there are 2 earlier buses from Redcar to Stokesley, Monday - Friday.

MARSKE/REDCAR – STOKESLEY (Hourly)

Marske Cemetery Hourly from 8.31am to only 5.31pm

Redcar Bus Stn Hourly from 8.44am to 6.30pm

Guisborough	Hourly from	9.12am	to	6.12pm	6.58pm
Ayton	Hourly from	9.33am	to		6.33pm
Stokesley High St.	Hourly from	9.41am	to	6.41pm	

ROUTE CHANGES

The 81 now continues past Redcar to Marske & begins the return journey there for most of each day.

* When called 781 the service is supported by Redcar & Cleveland Council

29 between MIDDLESBROUGH, J.COOK HOSPITAL, AYTON & STOKESLEY**MONDAY – SATURDAY****MIDDLESBROUGH TO STOKESLEY**

Outline Route: Middlesbro' Bus Station; Saltersgill Hotel; James Cook Gt Ayton, High Green; Stokesley High Street; (+ Tanton Rd, Ashworth Drive)

ROUTE CHANGES

The 29 no longer goes through Eagle Park. (Saves 5 minutes.)

* * * * *

The 1st 4 journeys to M'bro'on Mondays - Fridays begin at Tanton Rd, Ashworth Drive.

The last 4 return journeys (Mon -Fri) end there.

MONDAY – SATURDAY**STOKESLEY – MIDDLESBROUGH****Not Sat.**

Stokesley	Half-hourly from	7.03am & 7.33	to	6.03pm
Ayton		7.15am 7.45		6.15pm
Hospital		7.43am 8.13		6.43pm
Middlesbro'		8.04am 8.34		7.04pm

SUNDAYS & BANK HOLIDAYS: NO SERVICE

MIDDLESBROUGH - STOKESLEY

Middlesbro'	Half-hourly from	8.00am & 8.30	to	7.00pm
Hospital		8.21am 8.51		7.21pm
Ayton		8.49am 9.19		7.49pm
Stokesley		8.57am 9.27		7.57pm

SUNDAYS & BANK HOLIDAYS: NO SERVICE

27 NORTHALLERTON for WEDNESDAY MARKET

Esk Valley Coaches 01947 600 604

Starts at Whitby: **Ayton not before 10.20**; Stokesley 10.33; Buck Inn, Northallerton **10.58am**

Returning: Buck Inn, Northallerton **1.25**; Stokesley 1.50; **Ayton 2.03pm** Finishes at Whitby

FREE BUS! - TO AND FROM TESCO, EAGLESCLIFFE, ON FRIDAYS:

Newton **12.55pm**; **Ayton**: normal stops + Hollygarth **1.00pm**; arrives Tesco **1.30pm** Problems?

Departs Tesco **2.30pm**; arrives **Ayton 3.00pm**; Newton **3.05pm**. Ring the store 01642 416 300

MOORSBUS NETWORK TIMETABLE: 01845 597 000 (T.I.P. or Library during the summer.)

Runs: Sun. & Bank Hols: end of Mar to end of Oct. **DAILY** approx. school summer holiday period.

Plan Ahead! (Timetables expected in the Library late March)

Hundreds of travel options such as links from Hull, York, Scarborough, Darlington, Hartlepool, Middlesbrough & Northallerton to Hutton le Hole, Danby, Castle Howard, Rosedale, Dalby Forest, Rievaulx Abbey, Sutton Bank & Helmsley. E.g. Moorsbus, leaving High Green at 9.35, would reach Rosedale Abbey (via Danby) at 10.45, returning 3.45, reaching Ayton at 4.25. A great day out!

FARES: (may go up) Inner Zone £3, or £6 per family. Outer Zone £6, or £12 per family. 0 - 4s free.

www.moors.uk.net/moorsbus

The Esk Valley Railway – Gt Ayton to Middlesbrough or Whitby – your local railway!

	MONDAY – FRIDAY				SATURDAY	SUNDAY TRAINS from 20 May				
M'bro	7.08	10.38	2.16	5.40	7.06	10.38	2.12	5.38		for all train times from 20 May please contact: www.eskvalleyrailway.co.uk or 08457 48 49 50 or www.nationalrail.co.uk or collect a leaflet from the Library
Ayton	7.25	10.55	2.33	5.57	7.23	10.55	2.29	5.55		
G'mont	8.20	11.44	3.22	6.46	8.14	11.44	3.18	6.44		
Whitby	8.41	12.05	3.43	7.06	8.35	12.05	3.39	7.05		
<hr/>										
Whitby	8.52	12.41	4.05	7.15	8.45	12.41	3.50	7.15		
G'mont	9.09	12.58	4.22	7.32	9.02	12.58	4.07	7.32		
Ayton	9.58	1.47	5.14	8.21	9.51	1.47	4.56	8.21		
M'bro	10.18	2.07	5.34	8.39	10.11	2.07	5.16	8.41		

Change at Grosmont for North Yorkshire Moors Railway

for all train times from 20 May
please contact:

www.eskvalleyrailway.co.uk
or
08457 48 49 50
or
www.nationalrail.co.uk
or collect a leaflet from the Library

Ayton - Whitby trains also call at: Battersby, Kildale, Commondale, Castleton, Danby, Lealholm, Glaisdale, Egton Bridge, Grosmont, Sleights and Ruswarp.

Ayton - Middlesbrough trains also call at: Nunthorpe, Gypsy Lane and Marton.

Fares until 20 May:

Day Return on any train ONLY £3 to Middlesbrough, £7 to Whitby

+ Duo fare to Middlesbrough: if two adults travel together the second travels for half price!

+ 33% off local fares with a Residents' Railcard: send £12 to EVRDC or renew for just £7.50.
for residents of Hambleton, Ryedale, Scarborough, Redcar & Cleveland, Middlesbrough and Stockton

Esk Valley Railway Development Company (EVRDC): info@eskvalleyrailway.co.uk

The Travel Centre, Whitby Railway Station, YO21 1YN www.eskvalleyrailway.co.uk

Trains operated by 'Northern Rail': 0845 00 00 125 customer.relations@northernrail.org

National Rail Enquiries: 08457 48 49 50 www.nationalrail.co.uk

Special Needs travellers in need of help please telephone: **08456 008 008**

The North Yorkshire Moors Railway – Grosmont to Pickering

Trains run **DAILY** from 17 March 2007

**NEW! Through trains between Whitby and Pickering on many dates
or take an Esk Valley train and change at Grosmont
attractive through train fares between Great Ayton and Pickering**

Trains leave **Grosmont** at:

9.50 am, 10.50 and/or 11.50, 12.50 pm and/or 1.50, 2.50 and/or 3.50

on some dates there are also trains at 4.50 pm, 6.10 pm

Trains leave **Pickering** at:

10.20 am and/or 11.20, 12.20 pm and/or 1.20, 2.20, 3.20 and/or 4.20

on some dates there are also trains at 8.45 am, 5.20 pm

Through trains to Goathland or Pickering leave **Whitby** on many dates at:

11.00 am, 2.00 or 2.15 pm, 5.40

Special events during many weekends throughout the season.

Services normally by steam train. See North Yorkshire Moors Railway leaflet for full timetable

Charter Trains & Pullman Dining Trains are available for business meetings or family celebrations.
Footplate Awareness Courses available for people aged 16 – 70. Please book in advance.

North Yorkshire Moors Railway Pickering Railway Station, North Yorkshire, YO18 7AJ

tel: **01751 472 508** or email: info@nymr.co.uk

www.nymr.co.uk

AYTON: BUCK HOTEL CAR PARK

Paper; cans (unsorted); clothes, etc for Salvation Army (in poly bags, please).

AYTON: LIBRARY

Laser & inkjet **cartridges** + unwanted **mobile phones** for the Scouts,
& your old **YELLOW PAGES** (at any time) also for the Scouts.

Used **stamps** for various charities.

AYTON: ROSEBERRY SCHOOL collects **paper**.**AYTON: RSPCA CENTRE, YARM LANE**

The Centre will gladly accept unwanted **towels** and **blankets**.

It is advisable to ring beforehand to arrange when to take them: **724 016**. (Tues - Sun 11 - 4)

AYTON: YATTON HOUSE

Bins for: paper, glass, clothes etc for Salvation Army. Books.

Cash for Trash! All **aluminium cans** left at Yatton House provide cash which is put towards the work of our Society. We recently raised **£100** for a delivery of squashed cans!

We accept to sell on: Books, toys, bric-a-brac, clean clothing,

Furniture - in re-saleable condition, please, & **not** foam-filled, due to Fire Regulations.

We use: jam jars, baby food jars, with lids please, for our jams, pickles & chutneys.

INDIVIDUALS IN AYTON

1. **Stamps**: Jen Winterschladen, Manor House, Low Green – for Canine Defence League.

2. Used **Cards** (**not** Christmas) for Children's Society: box, in Christ Church, or ring **724 153**.

ELSEWHERE:**STOKESLEY: AMENITY SITE, INDUST. ESTATE, STATION RD. (01609) 780 780 (now NYCC)**

Aluminium foil, batteries, car batteries, cardboard *, electrical equipment, engine oil, gas cylinders, glass, green waste, hard core & rubble, newspapers & magazines *, scrap metal, wood, Yellow Pages (any time) - all to recycle. Any non-recyclable waste. * no plastic bags. Clean textiles, music and books to pass on for further use via Oxfam.

SITE OPENS; 8.30am. CLOSSES: 5pm Mar; 7pm Apr-Sept; 5pm Oct; 4pm Nov-Feb.

STOKESLEY: CO-OP (Ex - Safeway) Paper, glass, cans (unsorted). Plastic bottles.

Clothing, textiles, etc for Salvation Army (in bags, please).

TEESSIDE HOSPICE: eager to have **RAGS** (torn, dirty, painty, old clothing/material, old shoes & handbags for recycling); furniture (Fire Reg. labels on all items of suite). **Will collect: 816 390.**

CHARITY SHOPS: help them to raise money if someone might buy what you don't need.

There are 3 in Stokesley, as close as going to the Amenity Site to throw things away.

UNWANTED PHOTOGRAPHS: Write on back approx. date & location & send to: John Kirkham, Archivist, Barnardos, Tanners Lane, Barkingside, Ilford. Material for Social History research.

FURTHER INFORMATION **Local playgroups:** cardboard, paper, etc.

Play & Educational Resources Centre, Riverside Park, M'bro': (01642) **230 100**

Paper, cardboard, paints, fabric, knitting wool, buttons, etc. needed by the Centre, which trains child-minders, so needs resources to occupy a very wide age-range of children.

Opticians: are glad to receive your old spectacles for re-use in the 3rd world.

Hambleton District & Middlesbro' Councils produce comprehensive recycling guides.

Please let me know of any other items being collected for a charity in Great Ayton.
Editor: **722897**

1. **RINGING THE MILKMAN: (01642) 490 092**, now **Greencroft Dairies**, Redcar
Office: 8 - 1 Mon - Fri, & 8 - 12 Saturdays. **LOCAL 24 hour ANSWERPHONE: 714 047**

2. CONTACTING GREAT AYTON HEALTH CENTRE

MON – FRI: 8.00 - 6.00 Tel: 723 421. SATURDAYS now Out of Hours (Closed)

OUT OF HOURS No: 722 444. This will divert you to NYED in York. They will ask your details & pass them to the Northallerton Primary Care Centre, who will ring you back.

SAME DAY APPOINTMENTS: ring after 8.30 for **morning** times & after 11.00 for **afternoon** ones.

REPEAT PRESCRIPTIONS: Please apply in writing, by post or by hand, and allow extra time for processing, especially if you wish the prescription to be sent to the chemist for you to collect there.

3. LOCAL CORRESPONDENT Darlington & Stockton Times:

ROBERT LAPPIN: 11 Wainstones Close, Gt Ayton, N.Yorks. TS9 6LB. **(01642) 722 624.**
email: robert.lappin1@ntlworld.com or leave items in the box at the Library.

DEADLINE: Preferably the **MONDAY** before publication (Fridays); latest - noon Tuesday.

4. HAMBLETON DISTRICT COUNCIL - Telephone Number: 0845 1211 555.

All calls to the Council will be charged at local rate from anywhere in the Council's area.
Environmental Health, Planning, & Benefits Officers will hold surgeries at **Town Close** in **Stokesley** during the week, as well as being permanently at the **Northallerton Civic Centre**.

5. LOCAL MONTHLY FARMERS' MARKETS (usually 9.00am – 3.00pm)

Your opportunity to buy locally produced food directly from the producers

STOKESLEY (8 - 3)	1 st Saturday	THIRSK	2 nd Monday
PINCHINTHORPE	1 st Sunday	BEDALE	2 nd Tuesday
GUISBOROUGH	2 nd Saturday	PICKERING	3 rd Monday
NATURE'S WORLD (M'bro)	4 th Sunday (10 - 2)	RICHMOND (8 - 3)	3 rd Saturday
NORTHALLERTON(8 - 3.30)	4 th Wednesday	LEYBURN (8 - 3.30)	4 th Saturday

Please contact me if you know of any changes or wish me to include any other venues.

6. LOCAL SCHOOL HEAD TEACHERS + SCHOOL POSTAL ADDRESSES & TEL. Nos.

MARWOOD CHURCH OF ENGLAND VC INFANT SCHOOL	Head: Mrs VIVIANNE SMITH
Address: Low Green, Great Ayton, Middlesbrough. TS9 6NN	01642 722 389
ROSEBERRY COMMUNITY PRIMARY SCHOOL	Head: Mrs JACQUELINE WARBURTON
Address: Roseberry Crescent, Great Ayton, Middlesbrough. TS9 6EP	01642 722 883
STOKESLEY SCHOOL (11 – 18)	Head: Mr NORMAN CORNER
Address: Station Road, Stokesley, Middlesbrough. TS9 5AL	01642 710 050
INGLEBY GREENHOW C of E VC PRIMARY SCHOOL	Head: Miss GILL BOTTOMLEY
Address: Great Ayton, Middlesbrough, TS9 6LL	01642 722 675

7. **CAB Website:** www.hambletoncab.org.uk Northallerton **01609 770 309** (some appoint's in Stokesley) or Redcar **01642 488 483**. Office: Guisborough at 88 Westgate, Guis. TS14 6AP. Appointments via Redcar.
Full contact details in previous issue: Autumn 2006, page 16. (Library has all back issues)

CHRIST CHURCH PAROCHIAL HALL

P A System and Loop for the hard of hearing

Available to Hire for Functions

Facilities for Disabled

VERY COMPETITIVE RATES

Telephone Office for details: **01642 722 665** Mon, Thurs, & Fri. mornings

Church of England revpev@clergy.net

Sundays 8.00am Holy Communion, Christ Church
 9.15am Parish Communion, Christ Church with Sunday School & Crèche
 11.00am Come & Praise: Family Service, 2nd Sun. each month
 6.00pm Evening Service: Summer, in All Saints; Winter, in Christ Church
 Wednesdays 10.00am Communion: Summer, in All Saints; Winter, in Christ Church
Newton under Roseberry: 11.00am Holy Communion, 1st & 5th Sundays. All Age Service 3rd Sunday

Vicar: Canon Paul Peverell, The Vicarage, off Guisborough Road. 722 333Office: Mon, Thurs & Fri mornings: 722 665. Email: greatayton.parishoffice@virgin.net**Methodist Church**

Office: Tues 12 - 3; Thurs 9 - 3, term time. 725 138

Sundays 9am Traditional Worship. Holy Communion monthly.
 10.30am Preaching, then all-age prayers & praise. Rock Club 3-13s. Holy Communion monthly
 6.00pm Sunday Service. 2nd Sun's united with Christ Church. 3rd Sun's usually Healing Service
 Weddings, Baptisms & Funerals by arrangement with the Minister.

Minister: Rev. Catherine Hutton, 30 Guisborough Road. 722 437**Religious Society of Friends (Quakers)**

Sundays: 10.30am Meeting for Worship

Wednesdays: 10 - 10.30am Meeting for Worship, followed by coffee.

Clerk: John Bayes, 2 Glendale, Guisborough, TS14 8JF. (01287) 634 345**Asst Clerk:** Kate Allen, 4 Hill View Tce, New Marske, TS11 8EP. (01642) 489 748**Roman Catholic Church**

Sunday 10.30am Mass
 Wednesday 7.00pm Mass

Ayton Representative: Mrs Ann Pickering 98 Marwood Drive 722 728**Priest:** Rt. Rev. Mgr. Ray Charlton, St Joseph's, Tanton Rd, Stokesley 710 239

Jubilee Church Wednesday 7.45 to 9.30pm Friends' Meeting House High Green. Alt. weeks,
 for teaching, worship, coffee. Sun: McMillan College, 10.30am: Jonathan Knight 01642 318 147

USEFUL VILLAGE TELEPHONE NUMBERS

EDITOR of The Stream 722 897 Carol Morgan
Adverts (£10 squares) 723 014 Marian Button
Community Care Centre 710 085 Stokesley
 Volunteer Car Drivers: Community Care, as above
 All Saints' Church 722 173 Roger Arkell
 Guides & Brownies 710 909 Anita Huntsman
 Scouts & Cubs 711 503 Philip Walker
 Tourist Information Point 722 835
 Traidcraft + Christian Aid 722 279 The Harvies
 Yatton House 722 380 Manager: Judy Lindo
Parish Clerk: 722 292 clerk@greatayton.fsbusiness.co.uk

AYTON LIBRARY 723 268

Stokesley Library(local rate) 01609 533 461
 Stokesley Leisure Centre 711 140
 N.T. Events/Volunteers 01751 460 396
 Guisboro' Forest Walkway 01287 631 132

PUBLIC TRANSPORT: 0870 608 2 608**Buses:** Arriva T.N. 0870 602 3322

Leven Valley 01642 722 068

Trains: Northern Help: 0845 600 11 59

Esk Valley Devel. Co. 01947 825 885

NYMR Pickering 01751 472 508

LOCAL SCHOOLS

Ingleby G'how C of E Primary 722 675
 Marwood C. of E. Infants 722 389
 Roseberry Community Primary 722 883
 Stokesley Comprehensive 710 050

MILKMAN 490 092 (8-1 M-F, 8-12 Sat)
 24hr Answerphone: 714 047

NEWSAGENT Park Square 722 345



TAXIS Ayton Taxis 722 448
 Eclipse Taxis 723 699
 Roseberry Cabs 723 777
 Airport Connection 319 195


Dog Warden
 01609 767 104

HEALTH**Ayton Health Centre** 723 421**Out of Hours** 722 444**Ayton Chemist** 722 254

HOSPITALS: James Cook University Hospital,
 Marton Road, Middlesbrough 01642 850 850
 or 01642 8545 plus the Ward no. (eg 3 or 14)

Guisborough General 01287 284 000**Friarage, Northallerton** 01609 779 911**Mental Health Support** 01609 780 758**POLICE:** Non-Emergency Central Switchboard: 0845 60 60 247 & ask for Stokesley.

<p>It is grey, soft and cuddly. It looks old because it has been well loved. It is Ronny the Rhino.</p>  <p>Ronny's Life</p> <p>My Favourite toy is a soft cuddly rhino called Ronny. He has a soft grey body. He has a nice fluffy stuffing in him and fur. I play with Ronny by myself and I cuddle him in bed. He scares all the bad dreams away. I love Ronnie because Couse gave him to me and Couse lives in Holland. Ronny is my favourite toy. Every body loves him because he is soft and furry.</p> <p>Rhys Selby</p>	<p>They are very hard and are red, green, pink, yellow, brown and black. They have a flower on them.</p>  <p>Guess the toy</p> <p>My favourite russian dolls.</p> <p>My favourite toy is a Russian doll and they are hard. They look like a dome. They are made of wood. You need to pull the big one apart and the next and the next and so on. My younger brother gave them to me for my birthday. My friends think its fun to pull them out and put them in order.</p> <p>Rachel Houldsworth</p>	<p>He is furry. He is the colour of the storm. He is cuddly and soft.</p>  <p>My Best Toy</p> <p>My teddy is very very cuddly and soft. He's the colour of the storm and he is furry. Stormy has a white and blue checked bow. Once I put another teddy's coat on him and a pair of my socks on him. It is made of beads on the inside. The outside is made of fur. He likes to do a roly poly. I got it a long time ago from my favourite cousin.</p> <p>Joshua Hurwood</p>
---	---	--

<p>He has a straw coloured hat, a green jacket and a pair of black trousers. You can cuddle him in bed and play teddy bear picnics. It is</p>  <p>Scarecrow. Guess the Toy</p> <p>My Teddy Bear Scarecrow</p> <p>My favourite toy is a fabulous teddy bear called Scarecrow. He has a plastic nose and plastic eyes. He is made of wool. At night, Scarecrow scares all the bad dreams away. I love him because my Grandma and Grandad got him for me. Everyone thinks he is so beautiful.</p> <p>Megan Bennison</p>	<p>It is flat, it is a disc, it is fun to play. You sit at a computer to play it and you have to move around different worlds.</p>  <p>It is Lego Island 2!</p> <p>My favourite toy is a PC game called Lego Island 2. It is a metal disk. You move around the worlds collecting points. I like it because it is interesting and fun to play. It is a colourful game and I really enjoy it and my friends enjoy it too.</p> <p>Ben England</p>	<p>Charlie is furry. He scares all the bad dreams away.</p>  <p>Charlie Puffin</p> <p>My favourite toy is a cuddly puffin. Charlie has a red, yellow and orange beak and a white and black body. He is a sea bird. Charlie puffin is made of fluff and stuffing. He snuggles up to me in bed. I like Charlie because when we went to the Farne Islands I chose it. My brother likes the colours on its beak.</p> <p>Oliver Gubbins</p>
--	--	--

Great Ayton Tourist Information

Thanks to the efforts of one or two Northallerton Councillors a small grant was offered to Information Centres which were scheduled to close in 2007 by the withdrawal of their budgets.

Thanks also to the efforts of Nicky Smith of V.S.A. we have been awarded a grant, which should enable us to open for the 2007 season. I would like to thank Helen Murfin of the Community Care Association for pointing us in the right direction to apply for this grant. We hope to open as soon as possible in the new financial year, and offer the usual high standard of service to visitors and local residents.

H. A. Stonehouse, Manager.

🔗 Could **YOU** be a volunteer **ATTENDANT** at the **Captain Cook Schoolroom Museum** ?
Please contact Frances Greenwell: 722 966

GREAT AYTON TWINNING ASSOCIATION

The Twinning Association was formed in June 1997, so we are planning for our **TENTH ANNIVERSARY CELEBRATIONS**, which will include an evening of food and French folk music, and a summer barbecue.

The trip to **Ouzouer sur Loire** in France in August promises to be one to remember, and will include a visit to the town of **Sancerre** to see (& hopefully taste) local cheese & wine making.

New members are always welcome, especially families - the dates for the visit are **23-27 August**. Previous members are also welcome: perhaps you were on one of the first visits and would like to join us for the celebrations?

Please contact me for more details - **Susan Crellen: 724 388**

Great Ayton Library and Information Centre **Tel: 01642 723 268**

Email greatayton.library@northyorks.gov.uk

<u>Opening hours:</u>	Tuesday	9.30 to 12.30	+	2.00 to 5.00 pm
	Wednesday			2.00 to 5.00 pm
	Thursday	9.30 to 12.30	+	2.00 to <u>7.00 pm</u>
	Friday			2.00 to 5.00 pm
	Saturday	9.30 to 12.30		Closed on Sunday & Monday

- * Books for all ages * Information * Internet and pc access (one hour free for members)
- * Homework help * Audio books and storytapes * Videos and DVDs
- * Local history resources including a photographic archive pc * Newspapers and magazines
- * Home Library and Information Service (free deliveries to housebound customers)
- * Storytime (Tuesday 2.10 to 2.40 during termtime) * Jigsaw Library (Tuesday 2.00 to 4.00)
- * Police drop-in sessions (Thursday evening - see Library for dates & times)
- * Employment and training advice (Thursday 2.00 to 4.00)

So what are you waiting for?!

Come and join - it's free!

Our friendly staff will welcome customers old and new!

Christine Bower

THIS PAGE HAS BEEN SPONSORED BY ST MARGARET CLITHEROW CHURCH

Some recent research suggests that most people in Britain (over 90%) have never heard of Quakers, or the Religious Society of Friends. I wonder what that percentage would be in Great Ayton, Stokesley or Teesside generally? Does it matter, anyway? Well, it does to Friends throughout the country, many of whom were "spiritual orphans" before finding the Society, and who believe there must be many other "natural" Quakers "out there" who would discover a spiritual home amongst Friends if only they knew that we and our meetings existed and were accessible!

It is our custom to wait quietly for like-minded individuals to find us, but this year Friends in Britain have undertaken actively to reach out to their local communities in various ways, as they feel led, joining in a National Outreach Week planned for September 2007. Quaker Quest, a rolling series of informal presentations about Quakerism, is being held around this area as elsewhere, currently at Norton and due in Guisborough in the Autumn.

By coincidence, Quakers have received some "good press" recently relating to their work in the 18th century in the Anti-Slavery movement. Instead of writing more about this inspiring episode of Quaker history I offer a short "test" to the readers of The Stream, with thanks to Richard Waldmeyer.

What do YOU know about Quakers?

Are these statements true or false?

1. Quakers were Puritans and sailed to America in The Mayflower in 1620.

False - George Fox, considered founder of Quakerism, was not born till 1624 and the movement started around 1652. Boston Puritans detested Quakers who visited America in the 1650s - they were banished from the colony, some had their ears cut off, and a woman who returned was hanged "for being a Quaker".

2. Shakers are a type of Quaker.

False - Mother Lee, who founded the Shaker movement (known first as "Shaking Quakers"!) was a Quaker from Manchester. Shakers shared Quaker ideals of equality between men and women, pacifism and simplicity of lifestyle, but differed in living communally with property in common and practising celibacy.

3. Quaker Oats is a Quaker firm.

False - The owner of a new oats company, searching for a name in an encyclopaedia, was impressed by Quakers' reputation & adopted the name - possibly assuming Quakers were extinct!

4. Quakers started Darlington Football Club.

False - So many Quaker families did live and work in 19th Century Darlington that all the inhabitants were given the nickname.

5. You have to be born into a Quaker family to be one.

False - 85% of present members were not.

6. Quakerism is a way of life, not a set of rules.

True!

Any comments, questions etc to carole@avison.me.uk or **710 736** or to the Meeting House, High Green, open at least on Sunday and Wednesday mornings.

Carole Avison.

This year, Great Ayton can recall village events that are 40, 50, 60, 70 and even 100 years old.

40 years ago Thelma Thompson started up ballet classes in the village, and was later joined by her daughter Tina. Thelma is a qualified teacher and life member of the Academy of Dancing and has been an examiner for ballet schools. Pupils are trained from novice to high standards, following which many have been accepted for training in the professional schools and have embarked on a professional career. Granddaughter, third generation 12 year old Becky Dee, enjoys ballet lessons and loves to help with the smaller pupils.

Also in 1957, ex stage professional dancer and farmer's wife Elizabeth Bradley started a dancing school in the village,. Elizabeth encouraged the pupils and taught them to develop their talents by giving charity concerts in the village and taking dancing examinations. Her daughter Margaret joined her in teaching in 1978. During the last few years the school has been selected to dance at Disneyland Paris (twice), at the Palace Theatre Manchester (thrice), at Her Majesty's Theatre in the Haymarket and this year on May 5 will be dancing at the Royal Albert Hall. Many of the pupils have entered the acting and dancing profession and the School is as popular as ever.

50 years ago Wilfred Pickles visited the village to record his popular *Have a Go* show, which was broadcast nationally to an audience of twenty million listeners. In the show he would visit factories, docks and farms to speak in down to earth language to ordinary people and encourage them to tell the world their most embarrassing moments, their intimate secrets and their treasured memories in return for 'having a go' at his money-winning quiz. Six Aytonians were on the show, the only surviving member being Len Heaviside, now 63 years old and living at Guisborough.

Great Ayton Cricket club celebrated its 60th annual dinner dance and also its 50th annual men's dinner. The first dinner dance, held in the WI Hall in 1947, was prepared by the club's Ladies' committee consisting of soup, ham salad and trifle, all home prepared. The sittings were split into three and if you were down for the third sitting you were lucky to be back in the main hall for the last waltz. In 1968 they had to move to a larger venue and Arthur Walker, who has been associated in many roles with the club since 1947 and is now Club President, has organised the dances since 1968.

It is fitting that notable club anniversaries be celebrated this year as last season the team were the champions of the North Yorkshire & South Durham Premier League, the top league in the district. They are looking forward to defending the championship in the coming season, which they intend to do with vigour, yet still retaining the traditional village green atmosphere and attitude towards this National game.

Great Ayton Dramatic Society is also celebrating its 60th year. GADS was revived in May 1947, & in 1948 the programme notes defined the main aims as being to foster drama in the district & to give pleasure & entertainment to the audiences. Present day objectives have not changed significantly & they also have a thriving junior section with the youngsters giving performances themselves with great success. GADS are always delighted to welcome new members.

Great Ayton Old Time Dancing Circle also celebrated their 60th anniversary. Founder and still a current dancing member 84 years old Dorothy Harbottle recalls that it was her father, Harold Ward who formed the group in 1947 and in the '60s there was a long waiting list to join. They would welcome new members from anywhere of any age at their Monday evening dances in the Women's Institute Hall.

60 years ago also heralded one of the severest winters of the last century. The village was completely cut off by road for at least 2 days and many roads were closed for longer. The Middlesbrough to Battersby railway line was kept open, but the main Battersby to Whitby line was closed for several days. Snow was up to & over the hedge tops in the village & its environs.

A plot of land was bought in 1932 for a Women's Institute Hall and after intensive fund raising by members the Hall opened in 1937. It soon became, and still is, a popular venue for local events and hundreds of parties, dances, whist drives and meetings must have been held there. Over the last three years following enthusiastic fund raising by members, essential repairs and major refurbishments were carried out to bring the Hall up to modern standards, including an extended and refitted kitchen and toilet facilities and wheelchair access for the disabled. Further improvements are planned.

This year the local scouts will be celebrating the centenary of the start up of their Scout Movement by Lord Baden Powell and several national and local events are planned. Scouting first started in Ayton in 1925 although this Group closed in 1936. The present 1st Great Ayton scout group was registered in February 1964 and is still thriving in Great Ayton, with a total of 119 boys and youths from 6 to 18 years in the various Beaver, Cub Scouts, Scouts and Explorer S'cout groups. 10 leaders give their time voluntarily to encourage these boys to enjoy scouting activities geared to the current age, yet still maintaining their proud traditions.

These reminiscences are a not only a reminder of the start up of events within living memory, but are also a tribute to the founders & the 2 or 3 generations who have kept them going.

Bob Lappin

See also: Thompson's hardware (50 yrs) p. 12; the Bradley School of Dance (40 yrs) p. 36 and the Stokesley Charity Cycle Ride (10 yrs) p. 16.

THIS PAGE HAS BEEN SPONSORED BY ST MARGARET CLITHEROW CHURCH



THE BRADLEY SCHOOL OF DANCE

40TH ANNIVERSARY YEAR

The Bradley School of Dance goes from strength to strength. Last October the school took over 60 pupils to dance at Disneyland Resort Paris, where we performed 2 shows with pupils ranging from 6 years to adult section.

This year is a very special year for the school as it's our 40th Anniversary.

We are holding a dance school reunion in the summer - past pupils please contact me.

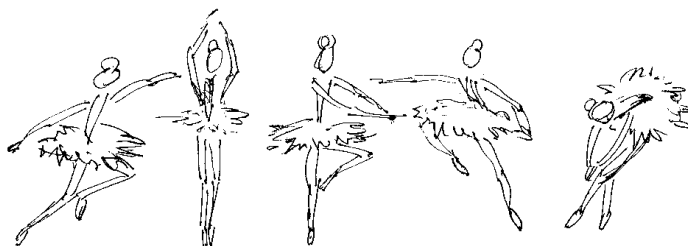
Margaret's mother Elizabeth started the school in 1967. Over the 40 years Margaret and Elizabeth, with the school, have raised thousands of pounds for charity, including Christ Church, Roseberry School, Yatton House and Great Ayton Health Centre. Margaret will also receive her life membership with the British Association of Dance. The presentation will be held in Glasgow in May 2007.

The school has just finished its annual show at the Middlesbrough Theatre, with all profits going to the Children's Society, Yorkshire Cancer Research and terminally ill children. The most prestigious event of our 40th Anniversary Year will be the honour to dance at the **Royal Albert Hall** on 5th May. 42 dancers will be performing, aged from 6 years -21 years. Margaret is choreographing a new dance for this special event. Hope to tell you all more about this event and our re-union in the next issue of The Stream. Happy dancing!

Margaret Connelly, FBATD

Principal of the Bradley School of Dance.

Email [**Margaret.Connelly@virgin.net**](mailto:Margaret.Connelly@virgin.net)



Ayton Carers' Support Group

Approximately 1 in 8 people in the UK are unpaid carers looking after family and friends in their own homes. These could be parents looking after an ill or disabled child, a spouse looking after an ill or aging partner, people supporting elderly neighbours or even a child helping to care for the parents.

Our organisation can offer advice, help and support to any carer - we have Adult Support Workers who can visit carers in their own home - give emotional support, often know who to contact for other services to improve the life of the carer, help fill out claim forms and even be a listening ear. We have special Child support workers who work one to one with children and offer some activity breaks to help them to meet other children in the same situation.

In **GREAT AYTON** we have a CARERS' SUPPORT GROUP which meets on the last Monday of each month in the METHODIST CHURCH HALL from 10 - 12 (Excluding Bank Holidays). Any Carer is welcome to drop in for a cup of coffee and a chat and meet the Support Worker.

For further information please contact : **01609 780 872**

Betty Mattison, Hambleton and Richmondshire Carer Centre

THIS PAGE HAS BEEN SPONSORED BY ST MARGARET CLITHEROW CHURCH

We continue to enjoy our music-making enormously, working hard but finding learning easy with our gifted young Conductor, Jeremy Harbottle, supported by our excellent Accompanist, his wife Pritiva Attiken. The half-time tea & chat is always a much appreciated feature of rehearsals for all!

We will be singing **Sacred Music for Good Friday** in **St Margaret Clitherow Church, 7.30 pm** (Mill Terrace, off Easby Lane), as one of the village's spiritual events for Eastertide. The lovely Church has beautiful acoustics and a well-designed position for the organist to see from and to be seen. We do not sell tickets as the performance is regarded as a service, with a collecting plate on leaving for donations to share between *The Bible Society* and *Christians against Poverty*.

The Organist will be Stephen Maltby. We will sing Fauré's **Requiem**, with soloists David Curtis, Baritone, and Susan Limbert, Soprano, Fauré's **Cantique de Jean Racine**, and Bruckner's Gradual **Christus factus est pro nobis**. Please join us.

On **Saturday, 7th July** we will give our annual **Soirée** in **Christ Church**, followed by our famous supper in the **Parochial Hall**. The programme, accompanied by Pritiva at the piano, will be a light-hearted selection of songs from a wide range of styles, with solos and readings. Here too the acoustics enhance the music – and in another hot summer, the pleasantly cool atmosphere of the Church will be very comfortable! Watch for posters – tickets will be on sale.

We welcome new members. It helps to be able to read music – a little French and Latin can be acquired when needed! Please contact me:

Carol Morgan 722 897 (Chairman)

Fairtrade in Great Ayton & Stokesley

The Great Ayton & Stokesley Fairtrade Steering Group is promoting Great Ayton as a Fairtrade Village and Stokesley as a Fairtrade Town. Since our inaugural 2006 events we have received encouraging support from both Great Ayton & Stokesley Councils and learnt that North Yorkshire County Council is also enquiring about Fairtrade status.



For the village to achieve Fairtrade Status, we are fortunate that our three main grocery stores – the Co-op, Bells and the Alternative Store, all stock Fairtrade goods, but we still need to persuade some of our many cafes and restaurants to serve, for example, Fairtrade coffee and tea. Please help the cause by asking for Fairtrade when you go for a cuppa.

This year's Fairtrade Fortnight's theme was **"Change Today Choose Fairtrade"** and ran from 26th February – 11th March. This year as well as the coffee morning in the Methodist Hall, we had a display in the libraries and ran a stall near Stokesley Town Hall. Future events include a stall at Stokesley **"May Day Fair"** on Monday 7th May (07.05.07) and the **"Big Brew"** on Saturday 7th July (07.07.07!).

If you would like to help, please contact me, **Barbara Hawkins: 723 160** blmhawkins@btinternet.com
or **Denise Henderson: 711 227** denisemhenderson@googlemail.com

THIS PAGE HAS BEEN SPONSORED BY THE BRADLEY SCHOOL OF DANCE

Roseberry Topping

Many of you helped us by providing material for our recent publication on Roseberry Topping, with photographs by Joe Cornish. Lots of you bought one, and quite a few had one bought for them. We do hope that everyone enjoyed the book and would like to thank all who supported us in publishing it. Rather to our surprise, and relief, we have now sold almost all the 3,000 initial print run. After a lot of discussion we have decided against risking a reprint, so if you still want a copy you had better be quick about it!

Our next project

We have been running for five years now, and are coming to the end of our second project funded by the Local Heritage Initiative. At present we are now putting together an application to the Heritage Lottery Fund for an exciting and new four-year project looking at why Great Ayton looks the way it does today. This will try to answer questions such as:

- Why does the village have two centres – around Low Green and around High Green?
- How did the housing development at California begin?
- What occupations and employment have there been in the village?
- What difference to village life was made by the railway?

Would you like to be involved in this new project?

We would really like more people to take part in this new project. You would be able to be involved at any time to suit yourself, doing some work from home, and spending as little or as much time as you liked. Some of the many aspects of village development that might interest you are:

- Tracing the history of individual buildings (perhaps your own house) with help from us.
- Tracing the history of some Ayton families, who have lived here for generations.
- Investigating the newcomers to the village in the past, why they came and where they came from.
- Looking at what it would have been like to live here 100 years ago, 200 years ago and 300 years ago.

We would warmly welcome anyone with existing Ayton family history or house history research which they would be willing to contribute to the project. If we are successful with our bid for funding, there will be more information about our new project, starting with a public meeting to launch the project, probably in the early summer.

If you would like to find out more, please contact me: **Ian Pearce 722 964**

or Dan O'Sullivan 723 358 or David W Taylor 722 748.

THIS PAGE HAS BEEN SPONSORED BY ST MARGARET CLITHEROW CHURCH

Between the 2 Wars Great Ayton was a sleepy little village full of well-known personalities. These are a few I remember from those decades

Mr HERBERT (BERTIE) BROWN was the Manager of the Drapery dept. of the Ayton branch of Middlesbrough Co-operative Society, the shop where "Thompson's Hardware Shop" now stands Mr Thompson still uses the same office as did Mr Brown - slightly modernised, perhaps! (+ p.??)

Bertie could supply the customer with anything from a shirt button to a suit, or Wellington boots to shoelaces. He was also Conductor of the long-disbanded Ayton Male Voice Choir.

Mrs HOOD was a prominent figure with the Ayton W. I. – their President for a number of years. By 1937 the W. I. ladies were the proud owners of their own hall, still in use today on Newton Rd

Mr T (TOMMY) WINN, Headmaster of the now demolished Edward Kitching School. Punctual, smart and conscientious – but handy with the cane! A 1st World War veteran, he was active in local government and cricket, and in school his pet subjects were country dancing and science. He liked to make laughing gas – pupils said it was the only time he smiled!

Mr W (BILLY) BELL, Headmaster of the C of E Marwood School, still in use. Prominent in the village, he was a serious Churchman who organised the Remembrance Day Parade each year.

Mrs TANFIELD & Mrs SURTEES, both teachers at the British School, which is now the Library.

These ladies taught the infants, and were very gentle with them. Mrs Tanfield, wife of a local builder, was the sterner of the two. Mrs Surtees was a War Widow.

Mr HAROLD MARTIN, Clerk of the Parish Council for many years & also the local rate collector, cycling round to collect the money. His office was below Captain Cook's schoolroom, now an antique shop. His office was also the Parish Council Chamber for a number of years.

We had 2 dairymen in the village: one's name was **Mr CHAPMAN** but he was better known as *Milky Willie*; the other was **Mr T (TOM) CUMBOR**, who farmed School Farm & had his own dairy to supply households with fresh milk twice daily, measured from the can which was carried in the milk float. Mr Cumbor took part in local government & for many years served on the Parish Council & North Riding County Council. During his term of office he was made an Alderman. His brother, A K Cumbor, was also a prominent figure in Local Government.

Mr W E DALBY was Organist & Choirmaster for a number of years at Christ Church, & in later years gave lunch-time recitals on the mighty organ in Middlesbrough Town Hall.

Mr NOEL KITCHING was also a well known personality in the village, taking a big part in the forming of the St John's Ambulance Brigade & the building of its recently demolished Hall.

Mr R P (RONNIE) HARBOTTLE was a well known poultry breeder & exhibitor who put Ayton on the map in the feathered world with his team of exhibition birds, taking them up & down the country in wicker baskets in his car, winning prizes at such shows as the Royal Ulster in Belfast, the Highland in Scotland, the Great Yorkshire, which was then held in various places in Yorkshire, the Cleveland & the Derbyshire County Show. Ronnie would often come away with the Supreme Challenge Trophy for his bird being "Best in Show".

Mr A OXENDALE, lamplighter, a familiar sight, morning & night, attending to the street gas lights.



Neighbourhood Policing, in Stokesley, Great Ayton and the other wards in the area, has been slightly restructured with the introduction of a new role to the team, that of ***NPT Dedicated Problem Solver***.

There are 2 Neighbourhood Policing Team officers in this position, one who covers primarily Stokesley & the neighbouring wards of Swainby & Rudby, & a second officer covering Great Ayton, Broughton & Greenhow. The role has been created to focus on solving the problems within those areas which most residents find most annoying, ranging from the common complaints of Anti-social Behaviour to Fly-tipping & Littering.

The main role of the problem solving officers will be to act as the first point of contact for key individuals and joint agencies, and to identify and work with other agencies in the area to create a multi-agency approach to problems which are surfacing in our ward areas. They hope, over time, to engage consistently with local communities and build networks within them, so that they can identify issues which are affecting local communities, and work with Councils, Housing Associations, Youth Services and various other organisations to combat the problems.

It is important for yourselves, as members of the public, to report all incidents which affect your quality of life, no matter how small the issue may be. This allows the Problem Solving Officers to recognise what is occurring within the area, the nature of any problems, and their regularity, so that they can hopefully use various tools to reduce or even solve the problem.

The Problem Solving Officers in the Stokesley area are
PC 1198 Glyn Jones and PC 1491 Michelle McFarlane.

PC Jones is concentrating his efforts on Great Ayton and Broughton areas, including Stokesley Industrial Estate, and PC McFarlane on Stokesley town, Swainby and Rudby areas.

The officers can be contacted about non-emergency community related issues on 0845 6060247 or drop us a line by post, or via email at **StokesleyNPT@northyorkshire.pnn.police.uk**.

At the moment all officers in Stokesley are targeting issues such as cross border crime and Anti-Social behaviour. There are a number of operations running within the areas addressing both. These have been up and running for a few weeks and will continue into the near future.

As always, although the dark nights are behind us for a few months, may I remind everyone that opportunist thieves are still out and about in all areas so please ensure houses, garages and outbuildings are properly secured at all times. During the warmer weather it is often tempting to leave doors and windows open whilst just popping out or sitting in the garden; unfortunately, sneak-in burglaries are very common once the warmer weather hits us, so - please be extra vigilant during these times.

PC1491 Michelle McFarlane

It's a new year in our lodge: in February we changed the Master; this year the new Master is a gentleman from Nunthorpe who works as an Electrician for the Evening Gazette, and we hope he has a successful year in office. One of the sad notes is that our Secretary has retired. He was very good at the job, and carried out the role efficiently; he was also a great help to me in my role.



The Lodge & I are very grateful to him. We are sure his successor will become just as effective.

Ayton Lodge is part of the National Freemasons' organisation, & as such we contribute money to both the provincial & national charities; you will no doubt remember from other newsletters that we also give to our own local charities. We are starting to give to children entering the A/E department at James Cook Hospital a small Masonic teddy bear, hoping this will help to reduce the stress of their visit; any feed back on this would be appreciated.

To give you some idea of the range of charities we support nationally: we have given £½ million pounds to the national Hospice organisations, with the North Yorkshire Hospices getting £12,142; Durham received £14,262. £722,000 was given out to various other charities around the country, including Research into Rheumatoid Arthritis, Ambulances for the Disadvantaged in Wales &, importantly for us fellows, Prostate Cancer Research. 13 other Organisations shared this money, & I hope this will have shown you another part of your local lodge's activity.

J. Hillyer, Information Liaison Officer.

YATTON HOUSE SOCIETY

We would like to take this opportunity to thank the local community for on-going support and interest in Yatton House.

Yatton House continues to offer valuable support for adults with Learning Difficulties to participate in new and rewarding activities, enabling them to gain essential skills in both recreational and educational activities. We have recently had some much needed refurbishment and can now offer suitable areas for rent. We will also, in the very near future, have an up-to-date printing service available, including photocopying of both black & white and colour.

* Looking for a room or building to hire? Contact Yatton House Secretary, **Brenda (722 380)**, to find out about our competitive rates. You may of course come and look at our facilities prior to booking. We can also provide catering, or catering facilities.

* Would you like to have a **2-course Lunch** at very reasonable cost?

If so, come and join us on **Wednesday** lunch-times in our newly refurbished Dining Room.

* Printing services will be available to the community as from April, thanks to funding gained from the Lottery to purchase new and up-to-date equipment.

Call for a quote of all of our competitive prices!

Judy Lindo, Manager.

Pupils at Marwood Church of England School have been celebrating their love of books and joy of reading in a variety of ways this last half term. Using World Book Day to kick off the theme, the whole project culminated in a visit from North East author and illustrator Liz Million.



"World Book Day encouraged the children to share favourite books with each other and think about why they like them," said Head Teacher Vivienne Smith. "Ms Million was then able to follow this up with an explanation of how stories originate and become books, complete with appropriate illustrations. She really helped the process of the creation of books come to life for the children, and I am sure they will all appreciate and enjoy their own collections much more as a result."

This was the first time Marwood School had celebrated World Book Day & it was a huge success. Year 2 teacher Dorothy Walton, who joined the staff last September, organised the day's activities and, as subject leader for literacy, saw it as a great way to promote reading as a fun pastime, as well as being educational. "Reading is key to all learning, and World Book Day is a wonderful opportunity to share our love of books through a variety of exciting activities," she explained.

The 56 infants spent the day playing games such as Charades, Pictionary and Consequences, using book titles and characters as the theme. They also made bookmarks, designed posters and wrote reviews of their favourite books.

Liz Million, who comes from Darlington, illustrates and writes children's books, and visits schools, libraries and museums all over the world to talk about her work and to show people how to draw! The day on which she visited Marwood was doubly exciting as it coincided with Red Nose Day when the children could wear their own red clothes in return for a donation to Comic Relief.

Marwood School

Christian Aid Walk: Sunday 20th May



Walkers will depart from the Methodist Church between 1.30 & 2.00 pm for a 10 km (6½ miles) Walk. The route will be announced later and Sponsor Forms will be available after Easter. It is usually an enjoyable family afternoon and raises money for a very worthwhile international cause.

Kate Harvie

Would YOU like to drive a MINI-BUS?

The CCA would love to **train you** (!) to drive their **2 new mini-buses**, which are used to provide some scheduled shopping trips, individual transport for appointments, etc, & some excursions, for the elderly, infirm, and disabled, for whose benefit the buses are specially adapted.

See pages 6, 7 & 8 for more details. ***Helen Murfin, CCA Manager 710 085***

THIS PAGE HAS BEEN SPONSORED BY N. JOHNSTON

Ears are still ringing all over Ayton this evening, Friday 15th March, as I write possibly the latest article for this season's Stream! The reason is that I've just got home from the noisiest, most inspiring service I've led in a long time!

I'm so proud to announce that 12 of our young people have, this evening, made a public declaration of faith and been Confirmed and made members of the Methodist Church.

The Methodist Church was packed full of their friends and supporters who whooped and clapped after each person spoke of the difference that Jesus has made to their life.

Statements such as:

*I felt God opening my eyes to other people and filling me with a new love for people,
even, to my surprise, my enemies*

and also

*When I feel sad or lonely, I don't feel helpless because I know Jesus is looking out for me
and I'm not alone*

are particularly poignant, especially in a cultural climate of such apathy and perceived hardness among teenagers.

The Confirmation itself was moving. There was a definite hushed awe in the room as each in turn knelt to receive the prayer of blessing, surrounded and prayed over by their Minister, Youth Leaders and members of the guest Band, YFriday.

Once they stood up to receive the right hand of fellowship from Ruth Tregoning, the Pastoral Secretary, the place erupted in wave after wave of applause.

Many of our regular members joined the throng of young people in the celebration and it brought back memories of their own Confirmation, the time when they stood to make promises of commitment and declared their love for Jesus.

After the awe came the party and YFriday, "the best worship band in the country", led a stunning gig ... worship in the mosh pit! All good things drew to a close with a VIP party, chocolate fountain and tired feet. A night to remember, to look back on with fondness - and to know that God enjoys a party as much as we do!

Congratulations to all who were part of such a great occasion.

Revd Catherine Hutton

THE “LIBERTY FOR ALL SLAVES” WORDSEARCH!

The words all relate to what all liberated slaves could, experience, reveal and find, once free. When you have found all **25 WORDS** in the Square, convoluted, reversed, upside-down, bent, diagonal – sometimes all within 1 word! – re-using letters (but not the same letter twice in the same word!)

7 LETTERS WILL REMAIN UNUSED.

They make **1 WORD**, which must describe Wilberforce's feeling after the Act was passed.

TO ENTER: please send **THE 1 WORD** with your **NAME & ADDRESS** to:

THE EDITOR, 22 WHEATLANDS, GT AYTON, TS9 6ED, or via Great Ayton LIBRARY.

There will be 3 small prizes.

CLOSING DATE: SAT. 28th April

Results in the Library by **SAT. 5th May**

RELEASE	FREEDOM	HUMANITY	RESPECT	DIGNITY	EQUALITY
CONSIDERATION	FRIENDSHIP	EDUCATION	JUSTICE	COURAGE	
TALENT	RECOGNITION	IDENTITY	OPPORTUNITY	CAREER	INCOME
LIFE	LOVE	HUSBAND	WIFE	HOME	NOURISHMENT
				IDEAS	DREAMS



Results of the “Gardener’s Year” WORDSEARCH, Autumn 2006

The answer was **FORSYTHIA**

The 3 winners were:

J MASSEY
Overbrook Cottage

FREDA PHALP
Aireyholme Farm

MRS M THOM
Skottowe Crescent

Special Recognition Prizes: Rebecca Dunn (14) Roseberry Cres; Louise Paton (10) visiting Marwood Dv.

19 Correct entries were also received, from:

Viv Addy, Easby Lane; Mrs M Allison, Hollygarth Close; Mrs E M Armitage, Beech Close; T B Aspery, Beech Grove; Mrs V Bullis, Beech Close; Mrs Eileen Bunn, Roseberry Cres; Malcolm Goat, Langbaugh Close; Mrs Janet Hey, Byemoor Close; Mrs Joyce Lappin, Wainstones Close; Brian Nevens, Roseberry Drive; Jennifer Roberts, High Street; I. Robinson, Newton Road; Mrs Colleen M Skerry, Roseberry Ave; Lynda Walker, Roseberry Cres; Mary de Wardt, Station Road; Mrs S Waters, Langbaugh Close; **AND...** Betty Bell, Morecambe & Skelton; Chris Parkes-Bristow, Lower Earley, Reading (regular visitor);

Margaret Whittle, Tadmarton, Banbury (former resident & visitor)!

Congratulations to all who reached the correct answer, submitted or not! I hope you had fun!

THIS PAGE HAS BEEN SPONSORED BY ST MARGARET CLITHEROW CHURCH

SLIMMING WORLD

WANT TO LOSE WEIGHT AND
KEEP IT OFF FOREVER?

JOIN OUR WARM AND FRIENDLY
SLIMMING WORLD GROUP

HELD EVERY MONDAY 7.00PM
FRIENDS' MEETING HOUSE,
HIGH GREEN, GREAT AYTON

YOU WILL LOVE THE RESULTS!

FOR MORE DETAILS CONTACT

LORRAINE 01287 652 738

MOBILE 07754 778 264

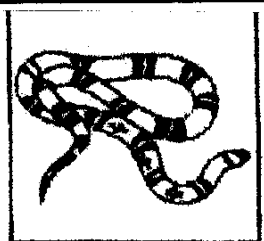
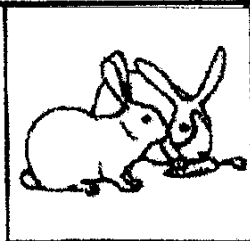
Stokeld & Stephens Opticians

42 Stokesley Road, Marton
(Above the Gents' Barber)

Open: Tuesday to Saturday

We now hold the patient records
from Miss Valerie Alsop's old
Practice in Great Ayton and will be
contacting everyone soon. Please
contact us if you have any queries.

Middlesbrough 322 386



ANIMAL ANTICS PET SHOP

PET SHOP

92a The Avenue

Nunthorpe

TS7 0AP

01642 327070

We provide high quality goods at competitive prices

PETS: feathered, furry, scaly, shell etc

HABITATS: cages, hutches, kennels, tanks, vivs etc

FOOD: dry, wet, treats, live, frozen etc

HEALTH HYGIENE CLOTHING

Free local delivery

OUR FAMILY BUSINESS CARES ABOUT YOU AND YOUR PET!

TAMOKO

Tattoo Studio/Great Ayton

From Fairies to skulls, Celtic to tribal,
any type of lettering, your own design
or my custom work. All carried out in
a modern, hygienic studio with a
relaxed friendly atmosphere.

For outstanding body-art

contact Danny :-

01642 722 643 07779 284 756

---- APPOINTMENT ONLY ----

7 Arthur Street

TOCKETTS MILL



CLEVELAND'S LAST WORKING WATERMILL

WORKING WATERMILL OPEN:

EASTER SUNDAY & MONDAY 2 - 4 pm

NATIONAL MILLS DAY (SUN. 14th MAY) 11 - 4 pm

THEN 2 - 4 pm EACH SUNDAY FROM JULY

Until the end of September.

1 MILE EAST OF GUISBOROUGH off A173 to Skelton.

ADULTS £1.50; O.A.P. £1; CHILD 25p

(Children must be accompanied by an adult)

Insurance Services you can trust

- Home insurance especially for the over 50s
- Motor insurance with up to 65% no claim discount
- All inclusive motor breakdown cover
- Affordable all-age travel insurance

For more information contact

Age Concern North Yorkshire

AGE
Concern

Northallerton 01609 771624

Harrogate 01423 502253

G40V2DEC04

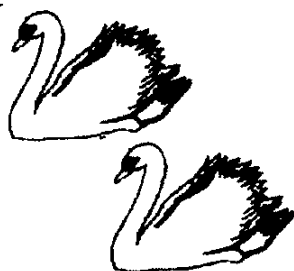
Age Concern Enterprises Ltd is authorised and regulated by the Financial Services Authority. It operates from around 200 local Age Concerns across the UK.

Park Rise Ladies Hair Salon

3, Park Rise
Great Ayton

TS9 6ND

Tel: 01642 724676



SWANS

JEWELLERS

V.A.T. REG. No. 259-4811-32



Member of
THE NATIONAL ASSOCIATION
OF GOLDSMITHS

"Where fine jewellery & personal service costs less"

107 High Street, Great Ayton.

01642 725 249

HUTTON SERVICES

MOBILE VEHICLE VALETING

PROFESSIONAL
CARPET & UPHOLSTERY
CLEANING

GARDEN MAINTENANCE

*Quality services so you can have
a quality lifestyle*

01642 722 863 or 07909 577 295

CLIFF ROBINSON LOCAL DECORATOR 01642 724 503



Friendly efficient service
Good selection of wallpaper books if required
Photos & references from previous work can be seen
Insurance work undertaken: Commercial & private
Taking bookings now

Ingleby Greenhow C of E VC
Primary School
Great Ayton
Middlesbrough
TS9 6LL



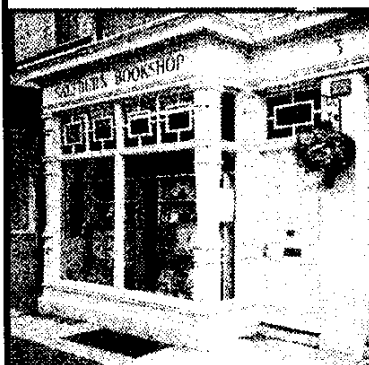
Head Teacher:
Miss Gill Bottomley
Telephone: 01642 722 675
Fax: 01642 725 353

Email:
admin@inglebygreenhow.n-yorks.sch.uk

OPEN AFTERNOON
Tues. 12th June 1.45 pm

Saltburn Bookshop

Secondhand and Antiquarian



OPEN
Tues. to Sat.

11.00 - 1.00
&
2.00 - 5.00

3 Amber St. Saltburn by Sea
01287 623335

The Guisborough **Model Shop**

Specialists in
Radio controlled models,
plastic kits and diecast

01287 619 154

7 Bow Street, Guisborough
TS14 6BP

www.gms-online.co.uk

Open 9 am - 5.30 pm

Closed Sunday & Tuesday

Body Bliss

Health & Skin Care Centre
59 High Street
Great Ayton

01642 723 300

refresh, revitalise, rejuvenate

Sun Bliss Tanning Lounge
opening 1st week of April
The Arcade



Home Fix Computers

Mobile In-Home Computer Repair Specialist

Mob: 07739 713474 / Tel: 01287 209808

Website: www.homefixcomputers.com

Available Daytime, Evenings & Weekends - Same Price Anytime!
(No Callout Charge - Set Fee Per Job)

Virus / Spyware Removal • Upgrades • Software Diagnostics • Initial Setup • Internet Problems
System Crashes • Data Recovery • Wireless Networks • New Computer Systems

Liz MacDonald

BSc. Hons, SRCh, MChs

**CHIROPODIST/
PODIATRIST**

Home visits – phone

01642 724453

SPANISH HOLIDAY VILLA

Fully equipped, detached private villa in Andalucia, close to National Park. Stunning mountain views, private pool, sleeps 2 – 6, both bedrooms en-suite, air con in main rooms. 25 mins drive to Nerja beaches, 1 hour to Malaga airport.

View <http://mysite.wanadoo-members.co.uk/casaladera>

e mail: casaladera1@yahoo.co.uk

or

Tel 01642 725426

Roseberry Decorating

(Great Ayton)

Prop. Len Trenholme

17 Central Way, Great Ayton,
North Yorkshire. TS9 6AY

Telephone 01642 722 715
Mobile 07766 766 874

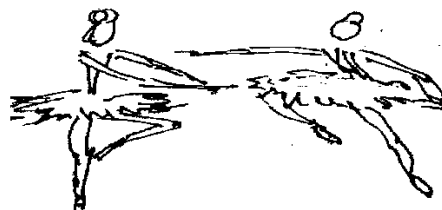
GARDENS ROTAVATED

**BRADLEY SCHOOL OF
DANCE**

Classes in

TAP – MODERN – BALLET

Ages from 3 years upward



Enquiries **01642 723250**

**The Co-operative, High Green, Great Ayton,
for all your grocery needs and much more**

The co-operative

membership



Join us

Why not become a member

and share in the co-operative group's profits?

Join us and make your opinion count!

Call in at the store for further details.



*We have a wide and varied
range of products including:*

*Organic & 'Free From' foods
Organic Beers & Wines
'Free From' confectionary
Dairy & Non-Dairy Ice-creams
Newspapers, Magazines & Cards
Refill service for Ecover products
and much, much more.....*

**1 High Street, Great Ayton,
TS9 6NH**

**Call Angela or Thomas
on**

01642 724 971

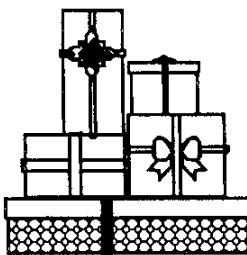
Jennifer Jayne

**LADIES, GENTS AND CHILDRENS
HAIRSTYLIST**

Telephone:

Great Ayton 722724

THE PREMIER COLLECTION



**Fancy Goods
Giftware-Handbags
Ladies and
Gentlemen's Clothes**

**113 High Street
Great Ayton
☎ 722823**

JOHN HUNTON EST 1982

PAINTER & DECORATOR

FREE ESTIMATES

4 ROSEBERRY DRIVE, GREAT AYTON

TELEPHONE GREAT AYTON 724213



Susie D's B & B

**EN SUITE ACCOMMODATION
...OPEN ALL YEAR...**

PHONE : 01642 724351

EMAIL : info@susieds.com

WEBSITE : www.susieds.com

CONTACT SUE DRENNAN

**CROSSWAYS
116 NEWTON ROAD
GREAT AYTON
NORTH YORKSHIRE
TS9 6DL**

YOUR LOCAL SOLICITORS

KITCHING.KNEALE & CO.

All legal work covered including:

- Wills, Trusts and Probate
- Conveyancing
- Divorce
- Accidents
- Litigation and Disputes

81 HIGH STREET, GREAT AYTON

Telephone GREAT AYTON 723713

ROSEBERRY CABS Ltd

GREAT AYTON

TAXI & PRIVATE HIRE

- Competitive Rates •
- All Airports Covered •
- Contract Work •
- Friendly Service •
- 8 Passenger Mini Bus •

Director: Paul Hughes

Tel: 01642 723777



Seasons

1 Park Square,
Great Ayton

*For all the latest trends in
Ladies Fashions and a large
Selection of Accessories*

Open

Monday - Saturday

9.00am - 5.00pm

Tel: 01642 723631

D. F. MOTORS

MOTOR ENGINEERS EST. 1965

*FREE PICK-UP & DELIVERY

*SERVICE & PRE-MOT FOR ALL TYPES OF
VEHICLE

*APPROVED AUTODIAGNOS CENTRE

*FORD & PEUGEOT PARTS ALWAYS IN STOCK

*TYRES, BATTERIES, EXHAUSTS, ETC.
SUPPLIED

*NEW PRODUCT AVAILABLE

"ULTRASEAL" PUNCTURE PREVENTATIVE

STATION YARD, GREAT AYTON, TS9 6HJ
WORK: 01642 722106 HOME: 01642 722706

A FAMILY BUSINESS THAT CARES

APPLIANCE REPAIRS

Cookers, Washers....

...almost every

electrical appliance

repaired & guaranteed

or 12 months.

7.00AM - 10.00PM 7 DAYS A WEEK

PETER WEST ELECTRICAL

ESTABLISHED 1986

MIDDLESBROUGH 01642 314 527

GUISBOROUGH 01287 610 417

MOBILE 07885 752 215

Paints

THOMPSONS HARDWARE

China

117 HIGH STREET, GREAT AYTON
MIDDLESBROUGH TS9 6BW

- Hardware • Seeds • Kitchenware
- Fancy Goods • Bedding Plants
- Petfood and Bedding
- Garden equipment and furniture
- Free delivery in Great Ayton

KEY CUTTING SERVICE